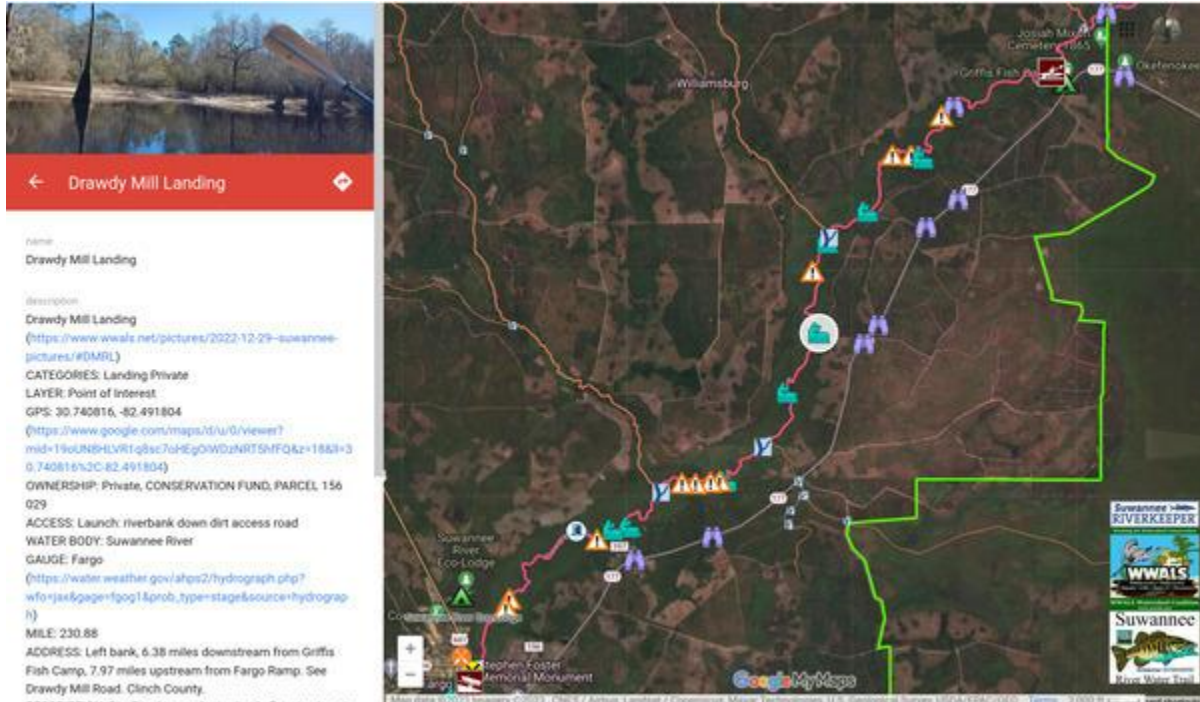


Drawdy Mill Landing:

The white circle highlights Drawdy Mill Landing. It is about halfway between Griffis and Fargo, so if the goal is to pick one landing to improve, this is the most obvious candidate. It also has a very direct road from GA 177.



<https://www.google.com/maps/d/u/0/viewer?mid=19oUN8HLVR1q8sc7oHEgOiwDzNRT5hfFQ&ll=30.736971546209737%2C-82.49656979392364&z=13>

MILE: 230.88; 6.38 miles downstream from Griffis Fish Camp, 7.97 miles upstream from Fargo Ramp