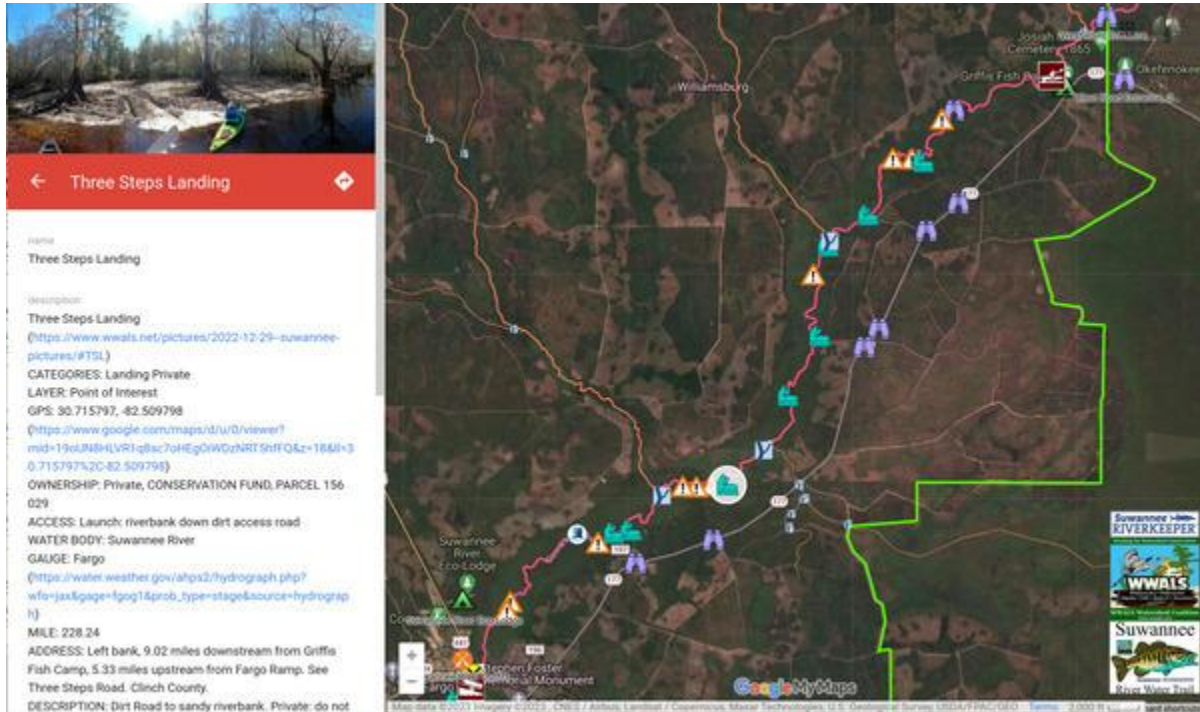


## Three Steps Landing:

The white circle highlights Three Steps Landing. It is about two thirds of the way from Griffis to Fargo. So in combination with Sport Camp Landing the two would divide the long stretch into thirds.



<https://www.google.com/maps/d/u/0/viewer?mid=19oUN8HLVR1q8sc7oHEg0iWDzNRT5hfFQ&ll=30.736971546209737%2C-82.49656979392364&z=13>  
MILE: 228.24; 9.02 miles downstream from Griffis Fish Camp, 5.33 miles upstream from Fargo Ramp