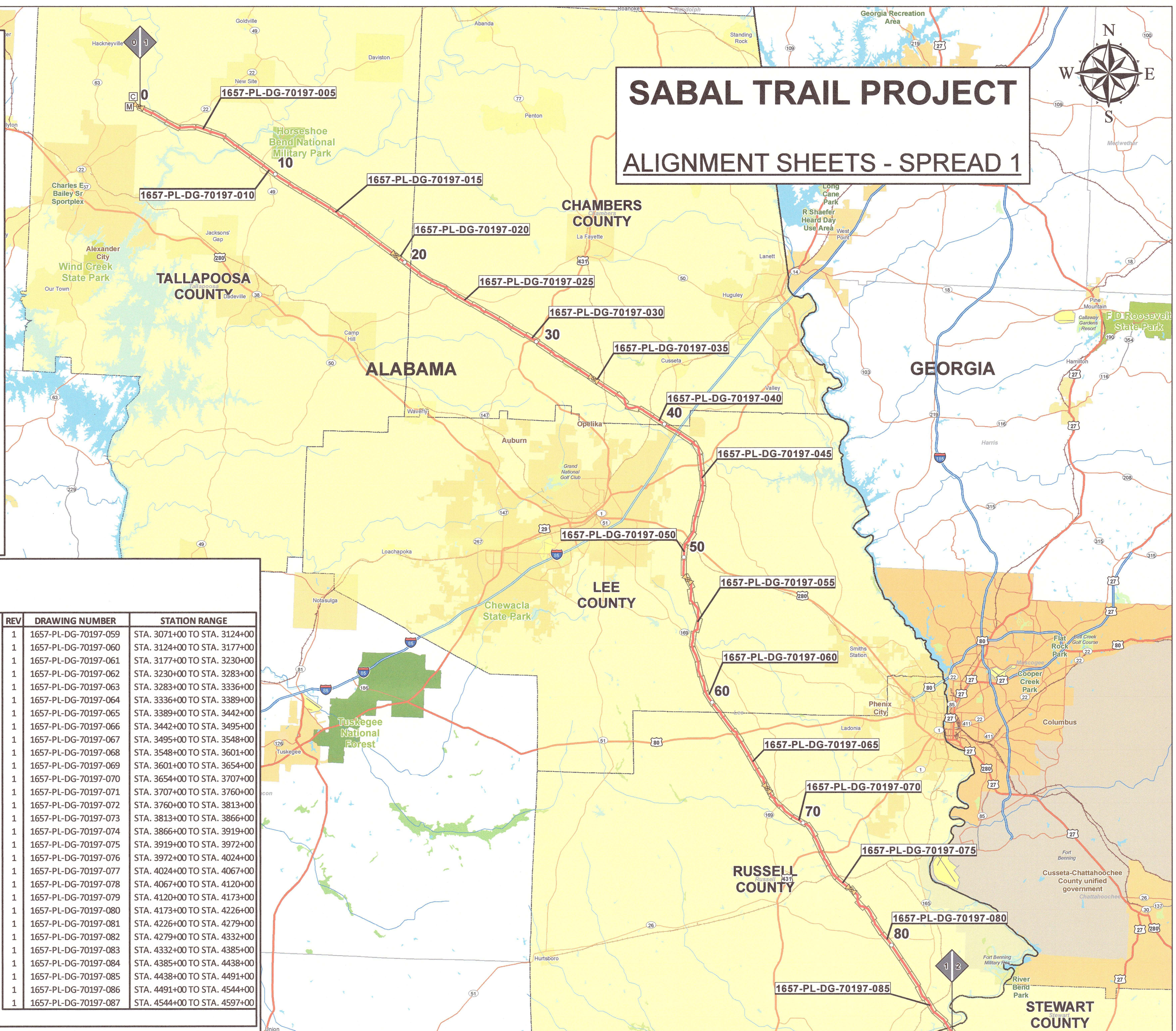


GENERAL NOTES

- SEC. T. R. = SECTION TOWNSHIP AND RANGE
- P.I. = POINT OF INTERSECTION
- CL = CENTERLINE
- PAR = PERMANENT ACCESS ROAD
- TAR = TEMPORARY ACCESS ROAD
- FGT = FLORIDA GAS TRANSMISSION
- FPL = FLORIDA POWER AND LIGHT
- COMPANY HAS LOCATED KNOWN UNDERGROUND FACILITIES. CONTRACTOR SHALL DETERMINE LOCATION AND DEPTH OF ALL UNDERGROUND FACILITIES TO BE CROSSED USING THE STATE'S ONE-CALL SYSTEM AND VISUAL METHODS.
- CLASS LOCATION STUDY FURNISHED BY SPECTRA ENERGY, MARCH 10, 2016.
- FOR CATHODIC PROTECTION AND AC MITIGATION DETAILS SEE "CATHODIC PROTECTION SYSTEM DESIGN", DOC. NO. 1657-PL-RP-7069-00.
- FOR BEND DETAILS SEE "BEND SUMMARY", DOC. NO. 1657-PL-LT-7002-00. THIS DOCUMENT DETAILS BEND NUMBERS, BEND MATERIALS, INSTALLATION STATIONS AND BEVEL DETAILS.
- FOR HYDROSTATIC TESTING SEE "PIPELINE HYDROSTATIC TESTING PLAN", DOC. NO. 1657-PL-GN-7004-00.
- THE HIGH POINTS AND LOW POINTS DETAILED ON THE CONSTRUCTION ALIGNMENT PROFILE ARE DETERMINED FROM THE GOVERNING PIPE SPECIFICATION FOR HYDROSTATIC TESTING.
- BOUYANCY CONTROL, THE LOCATION AND TYPE OF NEGATIVE BOUYANCY WEIGHTING SHOWN ON THE CONSTRUCTION DRAWINGS SHALL BE INSTALLED AT A MINIMUM. FOR ADDITIONAL DETAILS, SEE "BOUYANCY CONTROL PLAN", DOC. NO. 1657-PL-GN-7007-00.
- ALL POWER POLES AND POWER POLE GUIDE ANCHORS WITHIN 12 FEET FROM THE PROPOSED PIPELINE CENTERLINE WILL BE RELOCATED.
- FOR AERIAL MILE POST MARKERS SEE "AERIAL MARKERS", DOC. NO. 1657-PL-LT-7032.
- ALL LANDOWNER ADDITIONAL CONSTRUCTION STIPULATIONS (ACS) ADDRESSING: ADDITIONAL DEPTH OF COVER, EQUIPMENT CROSSINGS AND HEAVY WALL PIPE INCREASES, HAVE BEEN IMPLEMENTED PRIOR TO FEBRUARY 27, 2016.
- RARE, THREATENED, AND ENDANGERED SPECIES SENSITIVE ENVIRONMENTAL RESOURCES MASTER KEY
 - CRITICAL HABITAT-MUSSELS (PURPLE BANKCLIMBER, OVAL PIGTOE, SHINYRAYED POCKETBOOK, FAT THREE-RIDGE, GULF MOCCASINSHELL, OCHLOCKONEE MOCCASINSHELL, AND CHIPOLA SLABSHELL)
 - CRITICAL HABITAT-MUSSELS: UCHEE CREEK CROSSING
 - CRITICAL HABITAT-MUSSELS: FLINT RIVER CROSSING
 - CRITICAL HABITAT-GULF STURGEON
 - CRITICAL HABITAT-GULF STURGEON: SUWANNEE RIVER CROSSING
 - POTENTIAL HABITAT-BLUE SHINER
 - POTENTIAL HABITAT-BLUE SHINER: CHATTAHOOCHEE RIVER CROSSING
 - POTENTIAL HABITAT-BLUE SHINER: HANNAHATCHEE CREEK CROSSING
 - POTENTIAL HABITAT-LIPSTICK DARTER
 - POTENTIAL HABITAT-LIPSTICK DARTER: TALLAPOOSA RIVER CROSSING
 - POTENTIAL HABITAT-LIPSTICK DARTER: HILLABEE CREEK CROSSING
 - POTENTIAL HABITAT-BROADSTRIPE SHINER
 - POTENTIAL HABITAT-BROADSTRIPE SHINER: HANNAHATCHEE CREEK
 - POTENTIAL HABITAT-BROADSTRIPE SHINER: PATAULA CREEK
 - POTENTIAL HABITAT-BROADSTRIPE SHINER: HODCHODKEE CREEK
 - OCCUPIED HABITAT-GOPHER TORTOISE
 - OCCUPIED HABITAT-GOPHER TORTOISE BURROWS
 - POTENTIAL HABITAT-GOPHER TORTOISE COMMENSALS
 - OCCUPIED HABITAT-FLORIDA SAND SKINK AND BLUE-TAILED MOLE SKINK
 - POTENTIAL HABITAT-EASTERN INDIGO SNAKE
 - OCCUPIED HABITAT-FLORIDA SCRUB JAY
 - OCCUPIED HABITAT-FLORIDA BURROWING OWL
 - SOUTHEASTERN AMERICAN KESTREL
 - FLORIDA SANDHILL CRANE
 - BALD EAGLE
 - OCCUPIED HABITAT-WOOD STORK
 - POTENTIAL HABITAT-SHERMAN'S FOX SQUIRREL
 - POTENTIAL HABITAT-FLORIDA BLACK BEAR
 - OCCUPIED HABITAT-LONGSPURRED MINT
 - WILDLIFE NON-SPECIFIC (INSPECTIONS AND REPORTING)
 - SINGLE-SIDE FENCING
 - DOUBLE-SIDE FENCING
 - MONITORING
 - MONITORING (ATKINS CEMETERY)
 - BORED CROSSING

SABAL TRAIL PROJECT

ALIGNMENT SHEETS - SPREAD 1



SPREAD 1 DRAWING INDEX

REV	DRAWING NUMBER	STATION RANGE	REV	DRAWING NUMBER	STATION RANGE	REV	DRAWING NUMBER	STATION RANGE
1	1657-PL-DG-70197-001	STA. 0+00 TO STA. 53+00	1	1657-PL-DG-70197-030	STA. 1537+00 TO STA. 1590+00	1	1657-PL-DG-70197-059	STA. 3071+00 TO STA. 3124+00
1	1657-PL-DG-70197-002	STA. 53+00 TO STA. 106+00	1	1657-PL-DG-70197-031	STA. 1590+00 TO STA. 1643+00	1	1657-PL-DG-70197-060	STA. 3124+00 TO STA. 3177+00
1	1657-PL-DG-70197-003	STA. 106+00 TO STA. 159+00	1	1657-PL-DG-70197-032	STA. 1643+00 TO STA. 1696+00	1	1657-PL-DG-70197-061	STA. 3177+00 TO STA. 3230+00
1	1657-PL-DG-70197-004	STA. 159+00 TO STA. 212+00	1	1657-PL-DG-70197-033	STA. 1696+00 TO STA. 1749+00	1	1657-PL-DG-70197-062	STA. 3230+00 TO STA. 3283+00
1	1657-PL-DG-70197-005	STA. 212+00 TO STA. 265+00	1	1657-PL-DG-70197-034	STA. 1749+00 TO STA. 1802+00	1	1657-PL-DG-70197-063	STA. 3283+00 TO STA. 3336+00
1	1657-PL-DG-70197-006	STA. 265+00 TO STA. 318+00	1	1657-PL-DG-70197-035	STA. 1802+00 TO STA. 1855+00	1	1657-PL-DG-70197-064	STA. 3336+00 TO STA. 3389+00
1	1657-PL-DG-70197-007	STA. 318+00 TO STA. 371+00	1	1657-PL-DG-70197-036	STA. 1855+00 TO STA. 1908+00	1	1657-PL-DG-70197-065	STA. 3389+00 TO STA. 3442+00
1	1657-PL-DG-70197-008	STA. 371+00 TO STA. 424+00	1	1657-PL-DG-70197-037	STA. 1908+00 TO STA. 1959+00	1	1657-PL-DG-70197-066	STA. 3442+00 TO STA. 3495+00
1	1657-PL-DG-70197-009	STA. 424+00 TO STA. 477+00	1	1657-PL-DG-70197-038	STA. 1959+00 TO STA. 2012+00	1	1657-PL-DG-70197-067	STA. 3495+00 TO STA. 3548+00
1	1657-PL-DG-70197-010	STA. 477+00 TO STA. 530+00	1	1657-PL-DG-70197-039	STA. 2012+00 TO STA. 2065+00	1	1657-PL-DG-70197-068	STA. 3548+00 TO STA. 3601+00
1	1657-PL-DG-70197-011	STA. 530+00 TO STA. 583+00	1	1657-PL-DG-70197-040	STA. 2065+00 TO STA. 2118+00	1	1657-PL-DG-70197-069	STA. 3601+00 TO STA. 3654+00
1	1657-PL-DG-70197-012	STA. 583+00 TO STA. 636+00	1	1657-PL-DG-70197-041	STA. 2118+00 TO STA. 2171+00	1	1657-PL-DG-70197-070	STA. 3654+00 TO STA. 3707+00
1	1657-PL-DG-70197-013	STA. 636+00 TO STA. 689+00	1	1657-PL-DG-70197-042	STA. 2171+00 TO STA. 2224+00	1	1657-PL-DG-70197-071	STA. 3707+00 TO STA. 3760+00
1	1657-PL-DG-70197-014	STA. 689+00 TO STA. 742+00	1	1657-PL-DG-70197-043	STA. 2224+00 TO STA. 2277+00	1	1657-PL-DG-70197-072	STA. 3760+00 TO STA. 3813+00
1	1657-PL-DG-70197-015	STA. 742+00 TO STA. 795+00	1	1657-PL-DG-70197-044	STA. 2277+00 TO STA. 2330+00	1	1657-PL-DG-70197-073	STA. 3813+00 TO STA. 3866+00
1	1657-PL-DG-70197-016	STA. 795+00 TO STA. 848+00	1	1657-PL-DG-70197-045	STA. 2330+00 TO STA. 2383+00	1	1657-PL-DG-70197-074	STA. 3866+00 TO STA. 3919+00
1	1657-PL-DG-70197-017	STA. 848+00 TO STA. 901+00	1	1657-PL-DG-70197-046	STA. 2383+00 TO STA. 2436+00	1	1657-PL-DG-70197-075	STA. 3919+00 TO STA. 3972+00
1	1657-PL-DG-70197-018	STA. 901+00 TO STA. 954+00	1	1657-PL-DG-70197-047	STA. 2436+00 TO STA. 2489+00	1	1657-PL-DG-70197-076	STA. 3972+00 TO STA. 4024+00
1	1657-PL-DG-70197-019	STA. 954+00 TO STA. 1007+00	1	1657-PL-DG-70197-048	STA. 2489+00 TO STA. 2542+00	1	1657-PL-DG-70197-077	STA. 4024+00 TO STA. 4067+00
1	1657-PL-DG-70197-020	STA. 1007+00 TO STA. 1060+00	1	1657-PL-DG-70197-049	STA. 2542+00 TO STA. 2595+00	1	1657-PL-DG-70197-078	STA. 4067+00 TO STA. 4120+00
1	1657-PL-DG-70197-021	STA. 1060+00 TO STA. 1113+00	1	1657-PL-DG-70197-050	STA. 2595+00 TO STA. 2648+00	1	1657-PL-DG-70197-079	STA. 4120+00 TO STA. 4173+00
1	1657-PL-DG-70197-022	STA. 1113+00 TO STA. 1166+00	1	1657-PL-DG-70197-051	STA. 2648+00 TO STA. 2701+00	1	1657-PL-DG-70197-080	STA. 4173+00 TO STA. 4226+00
1	1657-PL-DG-70197-023	STA. 1166+00 TO STA. 1219+00	1	1657-PL-DG-70197-052	STA. 2701+00 TO STA. 2754+00	1	1657-PL-DG-70197-081	STA. 4226+00 TO STA. 4279+00
1	1657-PL-DG-70197-024	STA. 1219+00 TO STA. 1272+00	1	1657-PL-DG-70197-053	STA. 2754+00 TO STA. 2807+00	1	1657-PL-DG-70197-082	STA. 4279+00 TO STA. 4332+00
1	1657-PL-DG-70197-025	STA. 1272+00 TO STA. 1325+00	1	1657-PL-DG-70197-054	STA. 2807+00 TO STA. 2860+00	1	1657-PL-DG-70197-083	STA. 4332+00 TO STA. 4385+00
1	1657-PL-DG-70197-026	STA. 1325+00 TO STA. 1378+00	1	1657-PL-DG-70197-055	STA. 2860+00 TO STA. 2912+00	1	1657-PL-DG-70197-084	STA. 4385+00 TO STA. 4438+00
1	1657-PL-DG-70197-027	STA. 1378+00 TO STA. 1431+00	1	1657-PL-DG-70197-056	STA. 2912+00 TO STA. 2965+00	1	1657-PL-DG-70197-085	STA. 4438+00 TO STA. 4491+00
1	1657-PL-DG-70197-028	STA. 1431+00 TO STA. 1484+00	1	1657-PL-DG-70197-057	STA. 2965+00 TO STA. 3018+00	1	1657-PL-DG-70197-086	STA. 4491+00 TO STA. 4544+00
1	1657-PL-DG-70197-029	STA. 1484+00 TO STA. 1537+00	1	1657-PL-DG-70197-058	STA. 3018+00 TO STA. 3071+00	1	1657-PL-DG-70197-087	STA. 4544+00 TO STA. 4597+00

LEGEND

METER STATION	MILE POST	COUNTIES
COMPRESSOR STATION	SABAL TRAIL	ALIGNMENT SHEET INDEX
VALVES	STATE BOUNDARY	
SPREAD BREAK		

APPROVALS	INITIALS	DATE
GERALD R ALLEN	GRA	3/23/16
JASON CONNOR	JCN	3/25/16
FRANK S RAZEM	FRS	3/23/16

Gulf Interstate Engineering Company ("GIE") accepts no liability or responsibility whatsoever for: (i) any use of or reliance upon this document for anything other than its intended use on the Project; (ii) its use by any third party; and, (iii) for any unauthorized changes to this document or its attachments. Copying this document without the permission of the Customer and GIE is not permitted.

REV	DRN	DATE	DESCRIPTION
0	GIE	06/29/2015	ISSUED FOR BID
1	GIE	03/14/2016	ISSUED FOR CONSTRUCTION

SABAL TRAIL PROJECT
PROPOSED PIPELINE
ALIGNMENT COVER SHEET

LOC. SPREAD 1

YEAR: 2017 SHEET: 1 OF 1 SCALE: 1" = 3 MI DWG. 1657-PL-DG-70197-SP1 REV. 1

FILE PATH: H:\GIS\1657\Deliverables\Alignment\Drawings\1657-PL-DG-70197-001-SPREAD1.mxd