

RIGHT - OF - WAY	CROSSING													
TRACT NUMBERS	AL-CH-044.000		AL-CH-045.000				AL-CH-046.000		AL-CH-047.000		AL-CH-048.000	AL-CH-048.010.CR	AL-CH-049.000	AL-CH-050.000
RODDAGE	1643+00	87.8	1657+48	86.5	1671+76	42.8	1678+83	47.7	1684+70	6.4	1687+75	36.7	1689+00	1689+00
SURVEY DATA	SURVEY COMPANY: FIELD BOOK: PAGES:													
CLASS LOCATION	CLASS 1													
MINIMUM DEPTH OF COVER	3'	5'	3'	5'	3'	5'	3'	5'	3'	5'	3'	5'	3'	5'
PIPE MATERIAL	3R, FITTING SET ON WEIGHT, GPW, GEOTEXTILE PIPE WEIGHT													

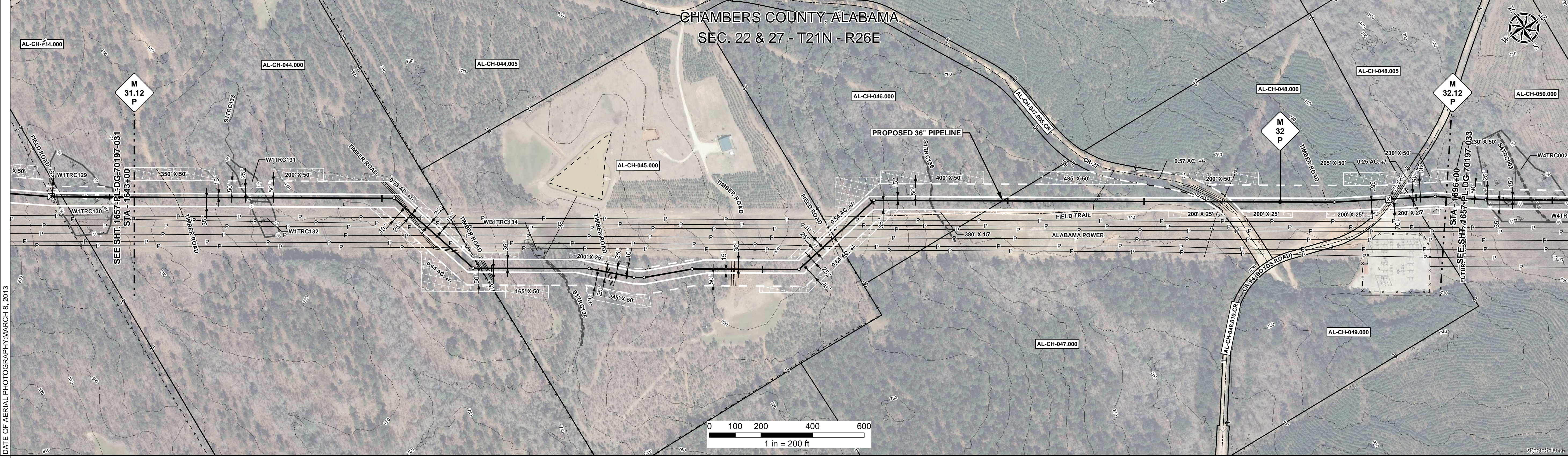
ALIGNMENT DETAIL

PROPOSED PIPELINE
 PROPOSED PERMANENT EASEMENT
 TEMP WORKSPACE
 ADD. TEMP WORKSPACE
 EASEMENT LINE
 CL STREAM/CREEK/DITCH
 EDGE OF WATER
 CL LEVEE
 FIELD DELINEATED WETLAND
 STREAM/DRAIN/WATERBODY BNDRY
 CL ROAD
 EDGE OF ROAD PAVEMENT/CURB
 CL CULVERT
 CL RAILROAD
 ACCESS ROAD (PAR/TAR)
 STRUCTURE
 CONTOUR MAJOR (EVERY 10')
 PIPELINE MILEPOST
 PIPELINE MILEPOST 10TH
 PROPERTY LINE
 UNDERGROUND WATERLINE
 UNDERGROUND COM. CABLE
 UNDERGROUND POWERLINE
 UNDERGROUND SANITARY SEWER
 OVERHEAD POWERLINE
 OVERHEAD TELEPHONE
 VERIFIED PIPELINE
 FENCE
 TOP / TOE

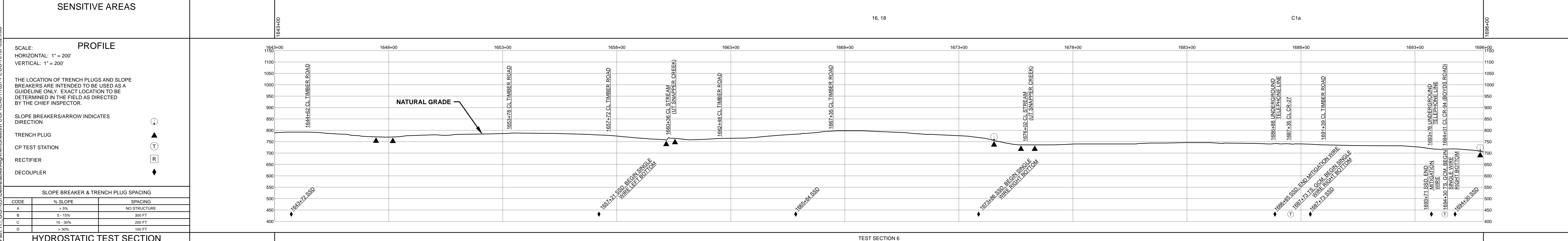
DATE OF AERIAL PHOTOGRAPHY: MARCH 8, 2013

TRANS. TOWER
 GUY ANCHOR
 HDD ENTRY/EXIT
 FIRE HYDRANT
 UTILITY POLE
 AERIAL MARKER
 ELEC. WATER, SAN. SEWER, GAS
 TELE. & STORM DRAIN MANHOLES

WELL
 SEPTIC
 VALVE
 METER
 SPREAD BREAK



REFERENCE DRAWING	AL-CH-047.005.CR										AL-CH-048.010.CR			
ENVIRONMENTAL SURVEY DATA	W1TRC131 PFO 1647+48 1648+18 S1TRC135 1660+32 1660+36 1660+41 S1TRC136 1676+02 1688+00													
SENSITIVE AREAS	16, 18													
PROFILE	C1a													



HYDROSTATIC TEST SECTION				TEST SECTION 6				ENGINEERING APPROVALS				SABAL TRAIL PROJECT PROPOSED 36" PIPELINE STA. 1643+00 TO STA. 1696+00 ALIGNMENT SHEET			
REFERENCE DRAWINGS		REVISIONS		MATERIALS		TITLE		SIGNATURE		DATE		CONSTRUCTION		LOC. CHAMBERS COUNTY, ALABAMA	
DWG. NO.	DESCRIPTION	REV	DRN	DATE	DESCRIPTION	ITEM NO.	DESCRIPTION	QTY						YEAR: 2017	SHEET: 32 OF 492
		0		06/29/2015	ISSUED FOR BID	1	36" O.D. x 0.520" W.T., API 5L X70, FBE 16 MILS w/I.D. EPOXY 1.7 MILS	5074 LF						SCALE: 1" = 200'	DWG. 1657-PL-DG-70197-032
		1		03/14/2016	ISSUED FOR CONSTRUCTION	4	36" O.D. x 0.750" W.T., API 5L X70, FBE 16 MILS, ARO 24 MILS, w/I.D. EPOXY 1.7 MILS	226 LF						REV. 1	
						3R	3R ELBOW, HIGH STRENGTH WROUGHT BUTT-WELD FITTING, 36" O.D.	4 EA							
						GPW	GEOTEXTILE PIPE WEIGHT, 9000 LBS	15 EA							
								ENGINEERING APPROVALS BID: SIGNATURE, DATE CONSTRUCTION: SIGNATURE, DATE DRAWN BY: GIE, FSR, 06/29/2015, FSR, 03/14/2016 DRN. DATE: 01/04/2016 CHECKED BY: GIE, DRS, 06/29/2015, JC, 03/14/2016 CHK. DATE:				SABAL TRAIL PROJECT PROPOSED 36" PIPELINE STA. 1643+00 TO STA. 1696+00 ALIGNMENT SHEET LOC. CHAMBERS COUNTY, ALABAMA YEAR: 2017, SHEET: 32 OF 492, SCALE: 1" = 200', DWG. 1657-PL-DG-70197-032, REV. 1			

Document Path: H:\GIS\1657\Deliverables\Alignment\Sheet\1657-PL-DG-70197-032.mxd
 1657-PL-DG-70197-032.mxd