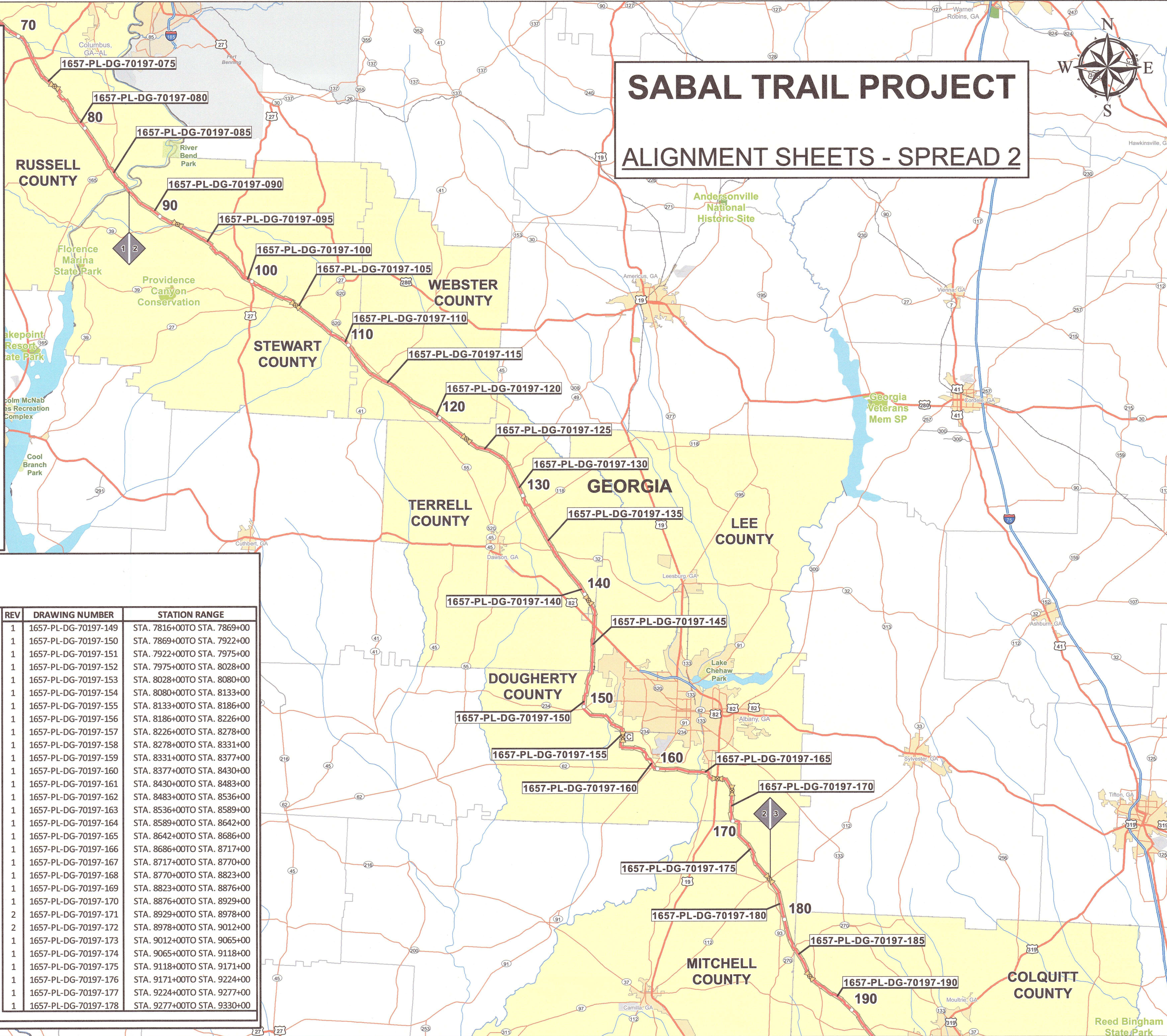


GENERAL NOTES

1. SEC. T. R. = SECTION TOWNSHIP AND RANGE
2. P.I. = POINT OF INTERSECTION
3. CL = CENTERLINE
4. PAR = PERMANENT ACCESS ROAD
5. TAR = TEMPORARY ACCESS ROAD
6. FGT = FLORIDA GAS TRANSMISSION
7. FPL = FLORIDA POWER AND LIGHT
8. COMPANY HAS LOCATED KNOWN UNDERGROUND FACILITIES. CONTRACTOR SHALL DETERMINE LOCATION AND DEPTH OF ALL UNDERGROUND FACILITIES TO BE CROSSED USING THE STATE'S ONE-CALL SYSTEM AND VISUAL METHODS.
9. CLASS LOCATION STUDY FURNISHED BY SPECTRA ENERGY, MARCH 10, 2016.
10. FOR CATHODIC PROTECTION AND AC MITIGATION DETAILS SEE, "CATHODIC PROTECTION SYSTEM DESIGN", DOC. NO. 1657-PL-RP-7069-00.
11. FOR BEND DETAILS SEE, "BEND SUMMARY", DOC. NO. 1657-PL-LT-7002-00. THIS DOCUMENT DETAILS BEND NUMBERS, BEND MATERIALS, INSTALLATION STATIONS AND BEVEL DETAILS.
12. FOR HYDROSTATIC TESTING SEE, "PIPELINE HYDROSTATIC TESTING PLAN", DOC. NO. 1657-PL-GN-7004-00.
13. THE HIGH POINTS AND LOW POINTS DETAILED ON THE CONSTRUCTION ALIGNMENT PROFILE ARE DETERMINED FROM THE GOVERNING PIPE SPECIFICATION FOR HYDROSTATIC TESTING.
14. BOUYANCY CONTROL, THE LOCATION AND TYPE OF NEGATIVE BOUYANCY WEIGHTING SHOWN ON THE CONSTRUCTION DRAWINGS SHALL BE INSTALLED AT A MINIMUM. FOR ADDITIONAL DETAILS, SEE "BOUYANCY CONTROL PLAN", DOC. NO. 1657-PL-GN-7007-00.
15. ALL POWER POLES AND POWER POLE GUIDE ANCHORS WITHIN 12 FEET FROM THE PROPOSED PIPELINE CENTERLINE WILL BE RELOCATED.
16. FOR AERIAL MILE POST MARKERS SEE, "AERIAL MARKERS", DOC. NO. 1657-PL-LT-7032.
17. ALL LANDOWNER ADDITIONAL CONSTRUCTION STIPULATIONS (ACS) ADDRESSING: ADDITIONAL DEPTH OF COVER, EQUIPMENT CROSSINGS AND HEAVY WA PIPE INCREASES, HAVE BEEN IMPLEMENTED PRIOR TO FEBRUARY 27, 2016.
18. RARE, THREATENED, AND ENDANGERED SPECIES SENSITIVE ENVIRONMENTAL RESOURCES MASTER KEY
 - 1 CRITICAL HABITAT-MUSSELS (PURPLE BANKCLIMBER, OVAL PIGTOE, SHINYRAYED POCKETBOOK, FAT THREE-RIDGE, GULF MOCCASINSHELL, OCHLOCKNEE MOCCASINSHELL, AND CHIPOLA SLABSHELL)
 - 1a CRITICAL HABITAT-MUSSELS: UCHEE CREEK CROSSING
 - 1b CRITICAL HABITAT-MUSSELS: FLINT RIVER CROSSING
 - 2 CRITICAL HABITAT-GULF STURGEON
 - 2a CRITICAL HABITAT-GULF STURGEON: SUWANNEE RIVER CROSSING
 - 3 POTENTIAL HABITAT-BLUE SHINER
 - 3a POTENTIAL HABITAT-BLUE SHINER: CHATTAHOOCHEE RIVER CROSSING
 - 3b POTENTIAL HABITAT-BLUE SHINER: HANNAHATCHEE CREEK CROSSING
 - 4 POTENTIAL HABITAT-LIPSTICK DARTER
 - 4a POTENTIAL HABITAT-LIPSTICK DARTER: TALLAPOOSA RIVER CROSSING
 - 4b POTENTIAL HABITAT-LIPSTICK DARTER: HILLABEE CREEK CROSSING
 - 5 POTENTIAL HABITAT-BROADSTRIPE SHINER
 - 5a POTENTIAL HABITAT-BROADSTRIPE SHINER: HANNAHATCHEE CREEK
 - 5b POTENTIAL HABITAT-BROADSTRIPE SHINER: PATLAULA CREEK
 - 5c POTENTIAL HABITAT-BROADSTRIPE SHINER: HODCHODKEE CREEK
 - 6 OCCUPIED HABITAT-GOPHER TORTOISE
 - 6a OCCUPIED HABITAT-GOPHER TORTOISE BURROWS
 - 6b POTENTIAL HABITAT-GOPHER TORTOISE COMMENSALS
 - 7 OCCUPIED HABITAT-FLORIDA SAND SKINK AND BLUE-TAILED MOLE SKINK
 - 8 POTENTIAL HABITAT-EASTERN INDIGO SNAKE
 - 9 OCCUPIED HABITAT-FLORIDA SCRUB JAY
 - 10 OCCUPIED HABITAT-FLORIDA BURROWING OWL
 - 11 SOUTHEASTERN AMERICAN KESTREL
 - 12 FLORIDA SANDHILL CRANE
 - 13 BALD EAGLE
 - 14 OCCUPIED HABITAT-WOOD STORK
 - 15 POTENTIAL HABITAT-SHERMAN'S FOX SQUIRREL
 - 16 POTENTIAL HABITAT-FLORIDA BLACK BEAR
 - 17 OCCUPIED HABITAT-LONGSPURRED MINT
 - 18 WILDLIFE NON-SPECIFIC (INSPECTIONS AND REPORTING)
 - C1a SINGLE-SIDE FENCING
 - C1b DOUBLE-SIDE FENCING
 - C2 MONITORING
 - C3 MONITORING (ATKINS CEMETERY)
 - C4 BORED CROSSING

SABAL TRAIL PROJECT
ALIGNMENT SHEETS - SPREAD 2



SPREAD 2 DRAWING INDEX

REV	DRAWING NUMBER	STATION RANGE	REV	DRAWING NUMBER	STATION RANGE	REV	DRAWING NUMBER	STATION RANGE
1	1657-PL-DG-70197-087	STA. 4544+00 TO STA. 4597+00	1	1657-PL-DG-70197-118	STA. 6185+00 TO STA. 6238+00	1	1657-PL-DG-70197-149	STA. 7816+00 TO STA. 7869+00
1	1657-PL-DG-70197-088	STA. 4597+00 TO STA. 4650+00	1	1657-PL-DG-70197-119	STA. 6238+00 TO STA. 6291+00	1	1657-PL-DG-70197-150	STA. 7869+00 TO STA. 7922+00
1	1657-PL-DG-70197-089	STA. 4650+00 TO STA. 4703+00	1	1657-PL-DG-70197-120	STA. 6291+00 TO STA. 6344+00	1	1657-PL-DG-70197-151	STA. 7922+00 TO STA. 7975+00
1	1657-PL-DG-70197-090	STA. 4703+00 TO STA. 4756+00	1	1657-PL-DG-70197-121	STA. 6344+00 TO STA. 6397+00	1	1657-PL-DG-70197-152	STA. 7975+00 TO STA. 8028+00
1	1657-PL-DG-70197-091	STA. 4756+00 TO STA. 4809+00	1	1657-PL-DG-70197-122	STA. 6397+00 TO STA. 6450+00	1	1657-PL-DG-70197-153	STA. 8028+00 TO STA. 8080+00
1	1657-PL-DG-70197-092	STA. 4809+00 TO STA. 4862+00	1	1657-PL-DG-70197-123	STA. 6450+00 TO STA. 6503+00	1	1657-PL-DG-70197-154	STA. 8080+00 TO STA. 8133+00
1	1657-PL-DG-70197-093	STA. 4862+00 TO STA. 4915+00	1	1657-PL-DG-70197-124	STA. 6503+00 TO STA. 6556+00	1	1657-PL-DG-70197-155	STA. 8133+00 TO STA. 8186+00
1	1657-PL-DG-70197-094	STA. 4915+00 TO STA. 4968+00	1	1657-PL-DG-70197-125	STA. 6556+00 TO STA. 6609+00	1	1657-PL-DG-70197-156	STA. 8186+00 TO STA. 8226+00
1	1657-PL-DG-70197-095	STA. 4968+00 TO STA. 5021+00	1	1657-PL-DG-70197-126	STA. 6609+00 TO STA. 6662+00	1	1657-PL-DG-70197-157	STA. 8226+00 TO STA. 8278+00
1	1657-PL-DG-70197-096	STA. 5021+00 TO STA. 5074+00	1	1657-PL-DG-70197-127	STA. 6662+00 TO STA. 6715+00	1	1657-PL-DG-70197-158	STA. 8278+00 TO STA. 8331+00
1	1657-PL-DG-70197-097	STA. 5074+00 TO STA. 5125+00	1	1657-PL-DG-70197-128	STA. 6715+00 TO STA. 6768+00	1	1657-PL-DG-70197-159	STA. 8331+00 TO STA. 8377+00
1	1657-PL-DG-70197-098	STA. 5125+00 TO STA. 5178+00	1	1657-PL-DG-70197-129	STA. 6768+00 TO STA. 6821+00	1	1657-PL-DG-70197-160	STA. 8377+00 TO STA. 8430+00
1	1657-PL-DG-70197-099	STA. 5178+00 TO STA. 5231+00	1	1657-PL-DG-70197-130	STA. 6821+00 TO STA. 6874+00	1	1657-PL-DG-70197-161	STA. 8430+00 TO STA. 8483+00
1	1657-PL-DG-70197-100	STA. 5231+00 TO STA. 5284+00	1	1657-PL-DG-70197-131	STA. 6874+00 TO STA. 6927+00	1	1657-PL-DG-70197-162	STA. 8483+00 TO STA. 8536+00
1	1657-PL-DG-70197-101	STA. 5284+00 TO STA. 5337+00	1	1657-PL-DG-70197-132	STA. 6927+00 TO STA. 6980+00	1	1657-PL-DG-70197-163	STA. 8536+00 TO STA. 8589+00
1	1657-PL-DG-70197-102	STA. 5337+00 TO STA. 5390+00	1	1657-PL-DG-70197-133	STA. 6980+00 TO STA. 7033+00	1	1657-PL-DG-70197-164	STA. 8589+00 TO STA. 8642+00
1	1657-PL-DG-70197-103	STA. 5390+00 TO STA. 5443+00	1	1657-PL-DG-70197-134	STA. 7033+00 TO STA. 7074+00	1	1657-PL-DG-70197-165	STA. 8642+00 TO STA. 8686+00
1	1657-PL-DG-70197-104	STA. 5443+00 TO STA. 5496+00	1	1657-PL-DG-70197-135	STA. 7074+00 TO STA. 7127+00	1	1657-PL-DG-70197-166	STA. 8686+00 TO STA. 8717+00
2	1657-PL-DG-70197-105	STA. 5496+00 TO STA. 5549+00	1	1657-PL-DG-70197-136	STA. 7127+00 TO STA. 7180+00	1	1657-PL-DG-70197-167	STA. 8717+00 TO STA. 8770+00
1	1657-PL-DG-70197-106	STA. 5549+00 TO STA. 5602+00	1	1657-PL-DG-70197-137	STA. 7180+00 TO STA. 7233+00	1	1657-PL-DG-70197-168	STA. 8770+00 TO STA. 8823+00
1	1657-PL-DG-70197-107	STA. 5602+00 TO STA. 5655+00	1	1657-PL-DG-70197-138	STA. 7233+00 TO STA. 7286+00	1	1657-PL-DG-70197-169	STA. 8823+00 TO STA. 8876+00
1	1657-PL-DG-70197-108	STA. 5655+00 TO STA. 5708+00	1	1657-PL-DG-70197-139	STA. 7286+00 TO STA. 7339+00	1	1657-PL-DG-70197-170	STA. 8876+00 TO STA. 8929+00
1	1657-PL-DG-70197-109	STA. 5708+00 TO STA. 5761+00	1	1657-PL-DG-70197-140	STA. 7339+00 TO STA. 7392+00	2	1657-PL-DG-70197-171	STA. 8929+00 TO STA. 8978+00
1	1657-PL-DG-70197-110	STA. 5761+00 TO STA. 5814+00	1	1657-PL-DG-70197-141	STA. 7392+00 TO STA. 7445+00	2	1657-PL-DG-70197-172	STA. 8978+00 TO STA. 9012+00
1	1657-PL-DG-70197-111	STA. 5814+00 TO STA. 5867+00	1	1657-PL-DG-70197-142	STA. 7445+00 TO STA. 7498+00	1	1657-PL-DG-70197-173	STA. 9012+00 TO STA. 9065+00
1	1657-PL-DG-70197-112	STA. 5867+00 TO STA. 5920+00	1	1657-PL-DG-70197-143	STA. 7498+00 TO STA. 7551+00	1	1657-PL-DG-70197-174	STA. 9065+00 TO STA. 9118+00
1	1657-PL-DG-70197-113	STA. 5920+00 TO STA. 5973+00	1	1657-PL-DG-70197-144	STA. 7551+00 TO STA. 7604+00	1	1657-PL-DG-70197-175	STA. 9118+00 TO STA. 9171+00
1	1657-PL-DG-70197-114	STA. 5973+00 TO STA. 6026+00	1	1657-PL-DG-70197-145	STA. 7604+00 TO STA. 7657+00	1	1657-PL-DG-70197-176	STA. 9171+00 TO STA. 9224+00
1	1657-PL-DG-70197-115	STA. 6026+00 TO STA. 6079+00	1	1657-PL-DG-70197-146	STA. 7657+00 TO STA. 7710+00	1	1657-PL-DG-70197-177	STA. 9224+00 TO STA. 9277+00
1	1657-PL-DG-70197-116	STA. 6079+00 TO STA. 6132+00	1	1657-PL-DG-70197-147	STA. 7710+00 TO STA. 7763+00	1	1657-PL-DG-70197-178	STA. 9277+00 TO STA. 9330+00
1	1657-PL-DG-70197-117	STA. 6132+00 TO STA. 6185+00	1	1657-PL-DG-70197-148	STA. 7763+00 TO STA. 7816+00			

LEGEND

- M METER STATION
- C COMPRESSOR STATION
- V VALVES
- SPREAD BREAK
- O MILE POST
- SABAL TRAIL
- ALIGNMENT SHEET INDEX
- STATE BOUNDARY
- COUNTIES

APPROVALS	INITIALS	DATE
GEARLD R ALLEN	ARL	3/23/16
JASON CONNOR	JC	3/23/16
FRANK S RAZEM	FR	3/23/16

Gulf Interstate Engineering Company ("GIE") accepts no liability or responsibility whatsoever for: (i) any use of or reliance upon this document for anything other than its intended use on the Project; (ii) its use by any third party; and, (iii) for any unauthorized changes to this document or its attachments. Copying this document without the permission of the Customer and GIE is not permitted.

REV	DRN	DATE	DESCRIPTION
0	GIE	06/29/2015	ISSUED FOR BID
1	GIE	03/14/2016	ISSUED FOR CONSTRUCTION
2	GIE	3/23/2016	RE-ISSUED FOR CONSTRUCTION

SABAL TRAIL PROJECT
PROPOSED PIPELINE
ALIGNMENT COVER SHEET

LOC. SPREAD 2

YEAR: 2017 SHEET: 1 OF 1 SCALE: 1" = 4 MI DWG. 1657-PL-DG-70197-SP2 REV. 2

FILE PATH: H:\GIS\1657\Deliverables\Alignment\Sheets\IFC_Supplemental\1657-PL-DG-70097-COVER_SPREAD2.mxd