

RIGHT - OF - WAY	CROSSING			
TRACT NUMBERS	GA-WE-057.010	GA-WE-059.000	GA-WE-060.000	
RODDAGE	77.6	0.5	243.1	
SURVEY DATA	SURVEY COMPANY: FIELD BOOK: PAGES:			
CLASS LOCATION	CLASS 1			
MINIMUM DEPTH OF COVER	4'	5'	4'	5'
PIPE MATERIAL	5300'			
SR ID W - 3R, FITTING SET ON WEIGHT, GPW, GEOTEXTILE PIPE WEIGHT				

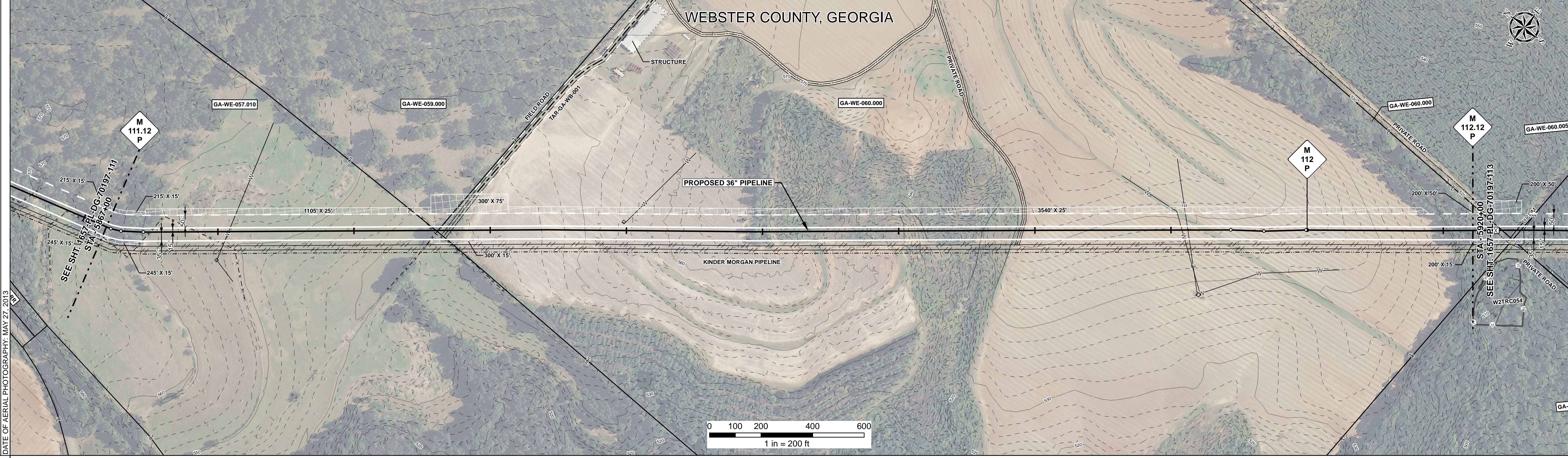
ALIGNMENT DETAIL

PROPOSED PIPELINE
 PROPOSED PERMANENT EASEMENT
 TEMP WORKSPACE
 ADD. TEMP. WORKSPACE
 EASEMENT LINE
 CL STREAM/CREEK/DITCH
 EDGE OF WATER
 CL LEVEE
 FIELD DELINEATED WETLAND
 STREAM/DRAIN/WATERBODY BNDRY
 CL ROAD
 EDGE OF ROAD/PAVEMENT/CURB
 CL CULVERT
 CL RAILROAD
 ACCESS ROAD (PAR/TAR)
 STRUCTURE
 CONTOUR MAJOR (EVERY 10')
 CONTOUR MINOR (EVERY 2')
 PIPELINE MILEPOST
 PIPELINE MILEPOST 10TH
 PROPERTY LINE
 UNDERGROUND WATERLINE
 UNDERGROUND COM. CABLE
 UNDERGROUND POWERLINE
 UNDERGROUND SANITARY SEWER
 OVERHEAD POWERLINE
 OVERHEAD TELEPHONE
 VERIFIED PIPELINE
 FENCE
 TOP / TOE

TRANS. TOWER
 GUY ANCHOR
 HDD ENTRY/EXIT
 FIRE HYDRANT
 UTILITY POLE
 AERIAL MARKER
 ELEC. WATER, SAN. SEWER, GAS
 TELE. & STORM DRAIN MANHOLES

WELL
 SEPTIC
 VALVE
 METER
 SPREAD BREAK

DATE OF AERIAL PHOTOGRAPHY: MAY 27, 2013



REFERENCE DRAWING

ENVIRONMENTAL SURVEY DATA

SENSITIVE AREAS

6a, 6b, 18

PROFILE

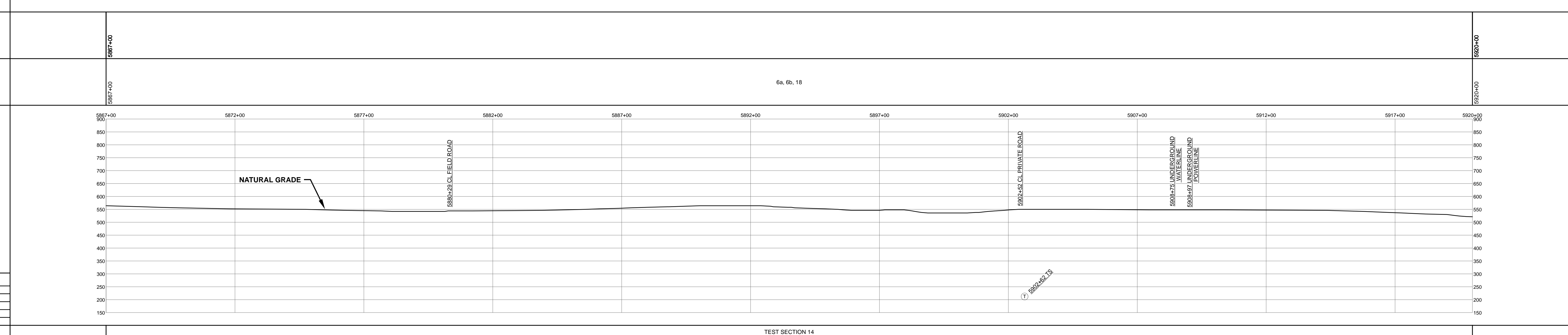
SCALE:
 HORIZONTAL: 1" = 200'
 VERTICAL: 1" = 200'

THE LOCATION OF TRENCH PLUGS AND SLOPE BREAKERS ARE INTENDED TO BE USED AS A GUIDELINE ONLY. EXACT LOCATION TO BE DETERMINED IN THE FIELD AS DIRECTED BY THE CHIEF INSPECTOR.

SLOPE BREAKERS/ARROW INDICATES DIRECTION

TRENCH PLUG
 CP TEST STATION
 RECTIFIER
 DECOUPLER

CODE	% SLOPE	SPACING
A	< 5%	NO STRUCTURE
B	5 - 15%	300 FT
C	15 - 30%	200 FT
D	> 30%	100 FT



HYDROSTATIC TEST SECTION

DWG. NO.	DESCRIPTION	REV	DRN	DATE	REVISIONS	ITEM NO.	DESCRIPTION	QTY
		0		06/29/2015	ISSUED FOR BID	1	36" O.D. x 0.520" W.T., API 5L X70, FBE 16 MILS w/I.D. EPOXY 1.7 MILS	5300 LF
		1		03/14/2016	ISSUED FOR CONSTRUCTION			

REFERENCE DRAWINGS		REVISIONS				MATERIALS	
DWG. NO.	DESCRIPTION	REV	DRN	DATE	DESCRIPTION	ITEM NO.	QTY
		0		06/29/2015	ISSUED FOR BID	1	36" O.D. x 0.520" W.T., API 5L X70, FBE 16 MILS w/I.D. EPOXY 1.7 MILS
		1		03/14/2016	ISSUED FOR CONSTRUCTION		

TEST SECTION 14

ENGINEERING APPROVALS			
BID		CONSTRUCTION	
TITLE	SIGNATURE	DATE	DATE
DRAWN BY: GIE	FSR	06/29/2015	03/14/2016
CHECKED BY: GIE	DRS	06/29/2015	03/14/2016
CHK. DATE:			

SABAL TRAIL PROJECT
PROPOSED 36" PIPELINE
STA. 5867+00 TO STA. 5920+00
ALIGNMENT SHEET

LOC. WEBSTER COUNTY, GEORGIA

YEAR: 2017 SHEET: 112 OF 492 SCALE: 1" = 200' DWG. 1657-PL-DG-70197-112 REV. 1

Document Path: H:\GIS\1657\Deliverables\Alignment\Sheets\1657-PL-DG-70197-112.mxd