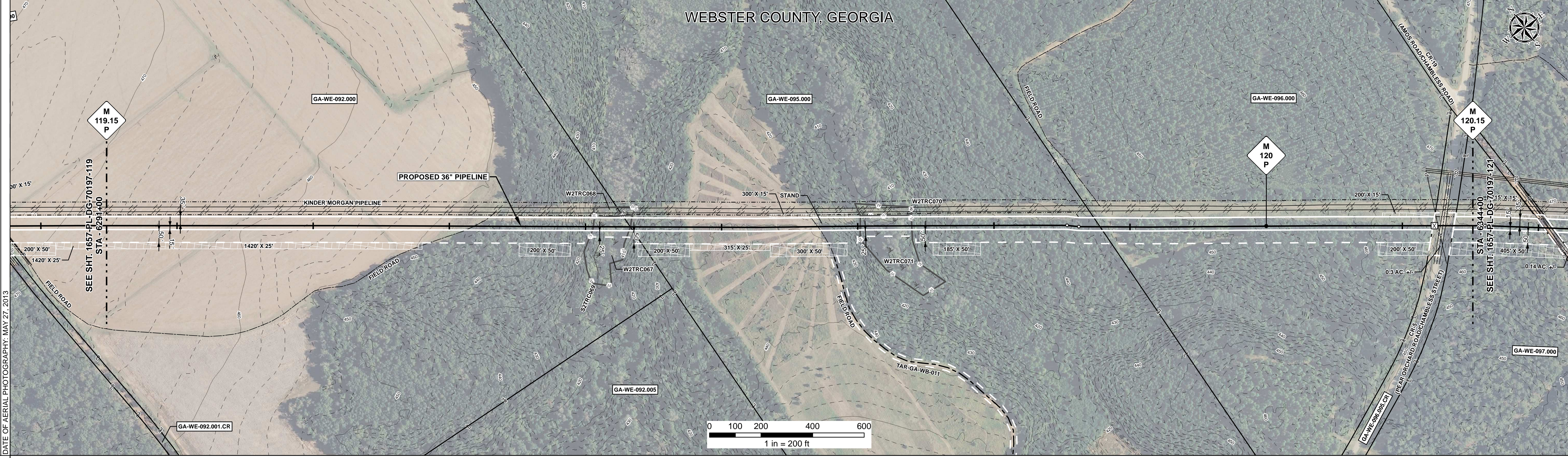
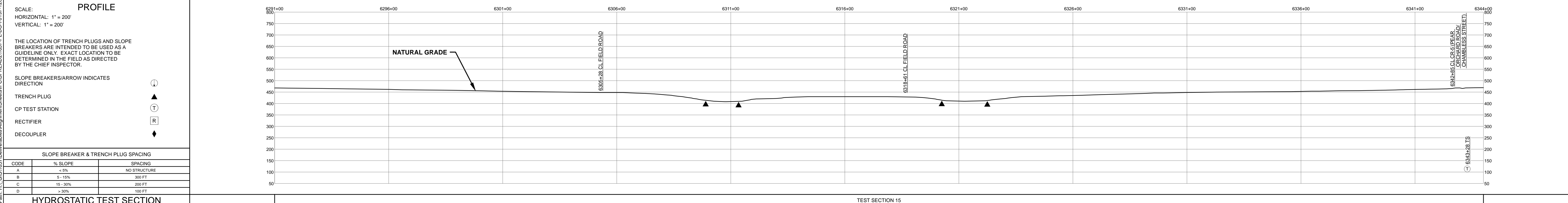


RIGHT - OF - WAY	CROSSING		GA-WE-092.000		GA-WE-095.000		GA-WE-096.000		GA-WE-097.000		
TRACT NUMBERS											
RODDAGE	123.3		110.4		78.3		4.9		4.4		
SURVEY DATA	SURVEY COMPANY: FIELD BOOK: PAGES:										
CLASS LOCATION	CLASS 1										
MINIMUM DEPTH OF COVER	4'		3'		4'		3'		5'		3'
PIPE MATERIAL	3R, FITTING		24 GPW, 14" C-C		31 GPW, 14" C-C		3R, FITTING		3R, FITTING		3R, FITTING
ALIGNMENT DETAIL											



REFERENCE DRAWING	1657-PL-DG-34514										
ENVIRONMENTAL SURVEY DATA			W2TRC067 PFO		W2TRC071 PFO						
SENSITIVE AREAS	6a, 6b, 18		18		6a, 6b, 18		18		6a, 6b, 18		



HYDROSTATIC TEST SECTION				TEST SECTION 15				ENGINEERING APPROVALS				SABAL TRAIL PROJECT PROPOSED 36" PIPELINE STA. 6291+00 TO STA. 6344+00 ALIGNMENT SHEET									
REFERENCE DRAWINGS		REVISIONS		MATERIALS		TITLE		SIGNATURE		DATE		YEAR: 2017		SHEET: 120 OF 492		SCALE: 1" = 200'		DWG. 1657-PL-DG-70197-120		REV. 1	
DWG. NO.	DESCRIPTION	REV	DRN	DATE	DESCRIPTION	ITEM NO.	DESCRIPTION	QTY													
		0		06/29/2015	ISSUED FOR BID	1	36" O.D. x 0.520" W.T., API 5L X70, FBE 16 MILS w/I.D. EPOXY 1.7 MILS	5205 LF													
		1		03/14/2016	ISSUED FOR CONSTRUCTION	4	36" O.D. x 0.750" W.T., API 5L X70, FBE 16 MILS, ARO 24 MILS, w/I.D. EPOXY 1.7 MILS	95 LF													
							GPW	GEOTEXTILE PIPE WEIGHT, 8000 LBS	55 EA												
								DRAWN BY: GIE DRN. DATE: 01/04/2016 CHECKED BY: GIE CHK. DATE:				BID: FSR DATE: 06/29/2015 CONSTRUCTION: FSR DATE: 03/14/2016				LOC. WEBSTER COUNTY, GEORGIA					

Document Path: H:\GIS\1657\Deliverables\Alignment\Sheets\1657-PL-DG-70197-120.mxd  
 1657-PL-DG-70197-120.mxd