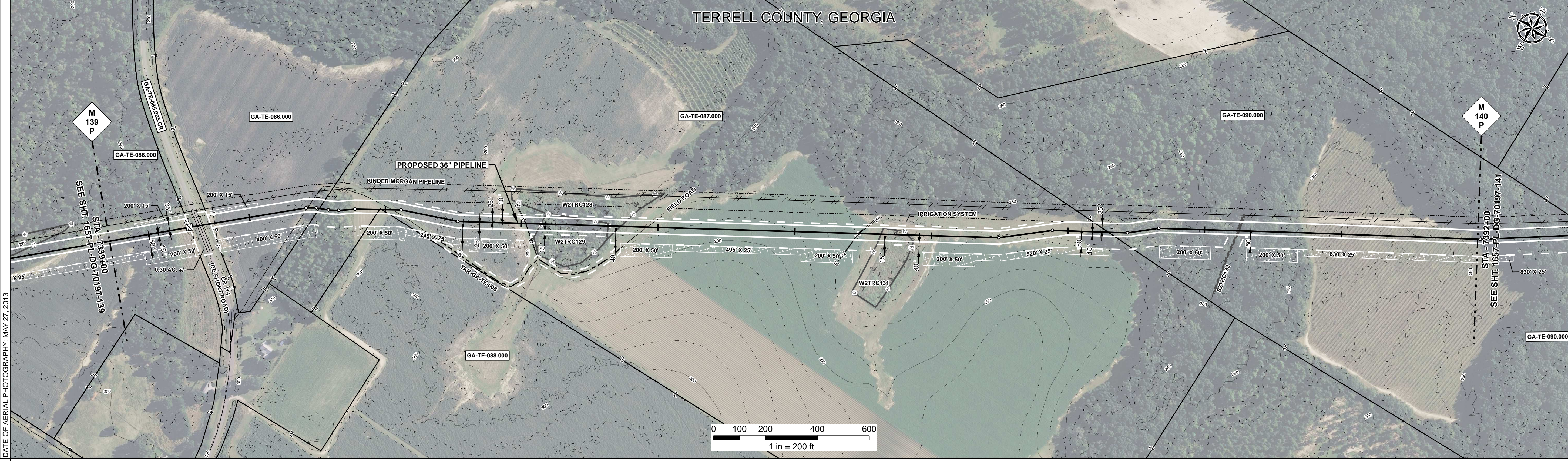
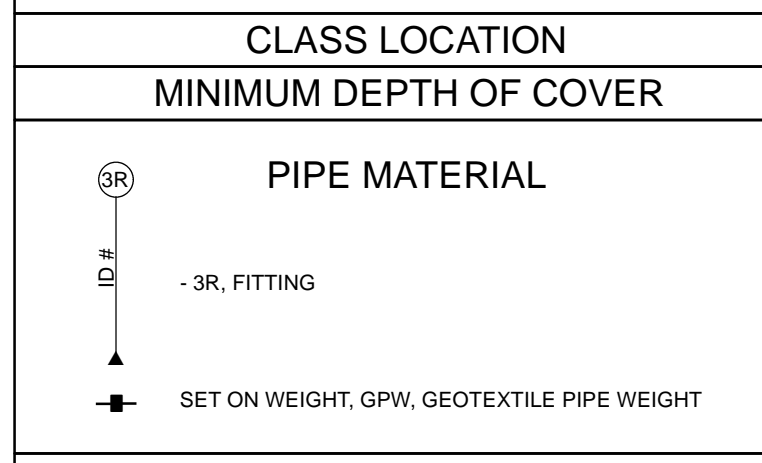


RIGHT - OF - WAY	CROSSING	GA-TE-086.000	GA-TE-085.005.CR	GA-TE-086.000	GA-TE-087.000	GA-TE-088.000	GA-TE-087.000	GA-TE-089.000	GA-TE-090.000
TRACT NUMBERS		7339+00	7342+14	7342+98	7347+21	7349+43	7349+42	7374+71	7392+00
RODDAGE		19.0	5.0	25.8	14.1	0.5	170.2		86.6

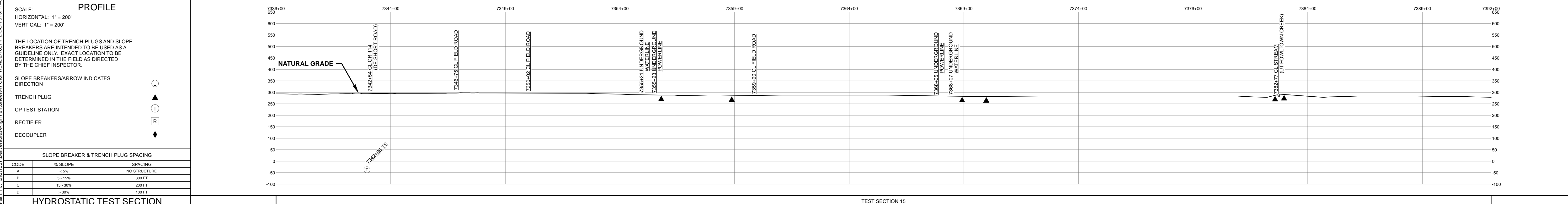
SURVEY DATA	SURVEY COMPANY: FIELD BOOK: PAGES:								
CLASS LOCATION	CLASS 1								
MINIMUM DEPTH OF COVER	4'								
PIPE MATERIAL	307' ① 115' ④ 7342+07 7343+22 7355+18 7359+48 4878' ① 7388+50 7371+37 31 GPW, 14' C-C 21 GPW, 14' C-C								



REFERENCE DRAWING	GA-TE-085.005.CR								
-------------------	------------------	--	--	--	--	--	--	--	--

ENVIRONMENTAL SURVEY DATA	7339+00	7344+00	7349+00	7354+00	7359+00	7364+00	7369+00	7374+00	7379+00	7384+00	7389+00	7392+00
---------------------------	---------	---------	---------	---------	---------	---------	---------	---------	---------	---------	---------	---------

SENSITIVE AREAS	7339+00	7344+00	7349+00	7354+00	7359+00	7364+00	7369+00	7374+00	7379+00	7384+00	7389+00	7392+00
-----------------	---------	---------	---------	---------	---------	---------	---------	---------	---------	---------	---------	---------



HYDROSTATIC TEST SECTION			REVISIONS			MATERIALS			ENGINEERING APPROVALS			SABAL TRAIL PROJECT PROPOSED 36" PIPELINE STA. 7339+00 TO STA. 7392+00 ALIGNMENT SHEET			Sabal Trail TRANSMISSION					
DWG. NO.	DESCRIPTION	REV	DRN	DATE	DESCRIPTION	ITEM NO.	DESCRIPTION	QTY	TITLE	SIGNATURE	DATE	SIGNATURE	DATE	LOC.	YEAR	SHEET	SCALE	DWG.	REV.	
		0		06/29/2015	ISSUED FOR BID	1	36" O.D. x 0.520" W.T., API 5L X70, FBE 16 MILS w/I.D. EPOXY 1.7 MILS	5185 LF						TERRELL COUNTY, GEORGIA	2017	140 OF 492	1" = 200'	1657-PL-DG-70197-140	1	
		1		03/14/2016	ISSUED FOR CONSTRUCTION	4	36" O.D. x 0.750" W.T., API 5L X70, FBE 16 MILS, ARO 24 MILS, w/I.D. EPOXY 1.7 MILS	115 LF												
							GPW	GEOTEXTILE PIPE WEIGHT, 9000 LBS	52 EA											

Document Path: H:\GIS\1657\Deliverables\Alignment\Sheet\1657-PL-DG-70197-140.mxd