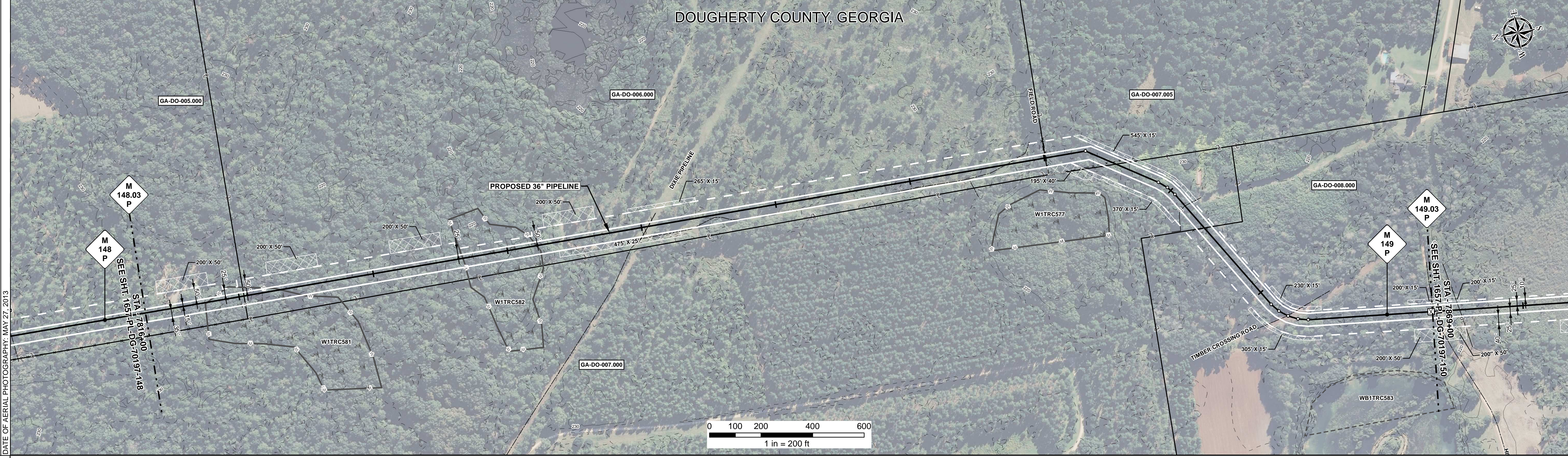
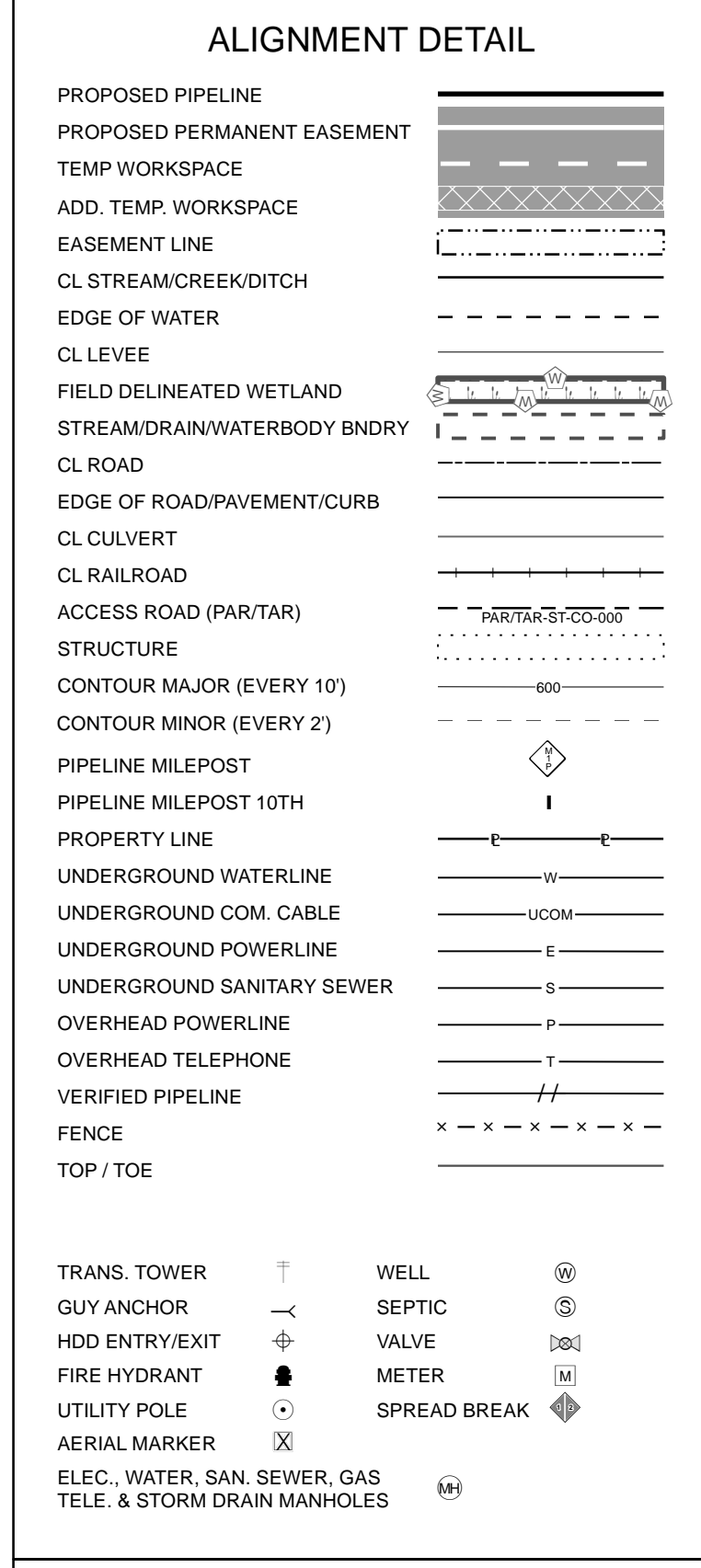
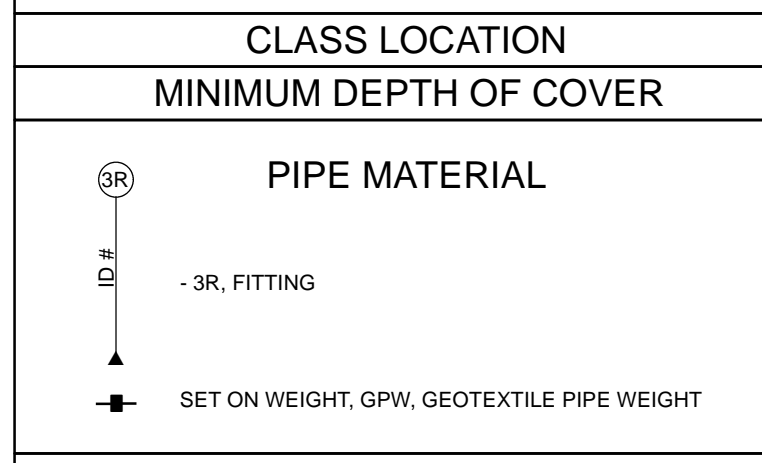
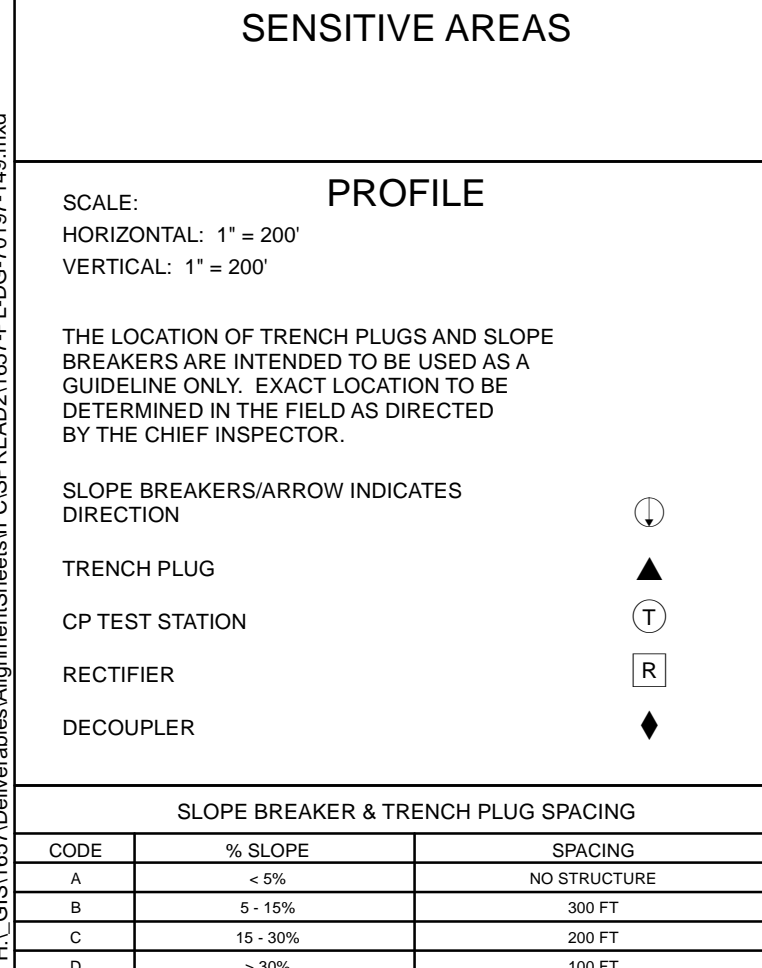


RIGHT - OF - WAY									
TRACT NUMBERS	GA-DO-005.000	GA-DO-006.000	GA-DO-007.005	GA-DO-007.000	GA-DO-008.000				
RODDAGE	23.5	191.2	17.4	26.1	63.1				

SURVEY DATA	SURVEY COMPANY: FIELD BOOK: PAGES:								
CLASS LOCATION	CLASS 1								
MINIMUM DEPTH OF COVER	3'								
PIPE MATERIAL	3R, FITTING SET ON WEIGHT, GPW, GEOTEXTILE PIPE WEIGHT								



REFERENCE DRAWING									
ENVIRONMENTAL SURVEY DATA	7816+00	7818+43	W1TRC581 PFO	7821+31	7829+48	W1TRC582 PFO	7831+39	7869+00	7869+00
SENSITIVE AREAS	6a, 6b, 18	18		6a, 6b, 18	18		6a, 6b, 18		



HYDROSTATIC TEST SECTION		REFERENCE DRAWINGS		REVISIONS			MATERIALS		ENGINEERING APPROVALS			SABAL TRAIL PROJECT PROPOSED 36" PIPELINE STA. 7816+00 TO STA. 7869+00 ALIGNMENT SHEET								
DWG. NO.	DESCRIPTION	REV	DRN	DATE	DESCRIPTION	ITEM NO.	DESCRIPTION	QTY	TITLE	SIGNATURE	DATE	SIGNATURE	DATE	LOC.	YEAR	SHEET	SCALE	DWG.	REV.	
		0		06/29/2015	ISSUED FOR BID	1	36" O.D. x 0.520" W.T., API 5L X70, FBE 16 MILS w/I.D. EPOXY 1.7 MILS	5300 LF						DOUGHERTY COUNTY, GEORGIA	2017	149 OF 492	1" = 200'	1657-PL-DG-70197-149	1	
		1		03/14/2016	ISSUED FOR CONSTRUCTION	3R	3R ELBOW, HIGH STRENGTH WROUGHT BUTT-WELD FITTING, 36" O.D.	1 EA												
						GPW	GEOTEXTILE PIPE WEIGHT, 9000 LBS	45 EA												
									ENGINEERING APPROVALS BID: SIGNATURE, DATE CONSTRUCTION: SIGNATURE, DATE			YEAR: 2017 SHEET: 149 OF 492 SCALE: 1" = 200' DWG. 1657-PL-DG-70197-149 REV. 1								