

RIGHT - OF - WAY	GA-COL-022.015.RC	GA-COL-025.000	GA-COL-026.015.RC	GA-COL-031.000	GA-COL-030.000	GA-COL-034.000
TRACT NUMBERS	9913+00	9914+00	9915+00	9916+00	9917+00	9918+00
RODDAGE	9.0	4.7	64.4	3.6	203.1	36.4

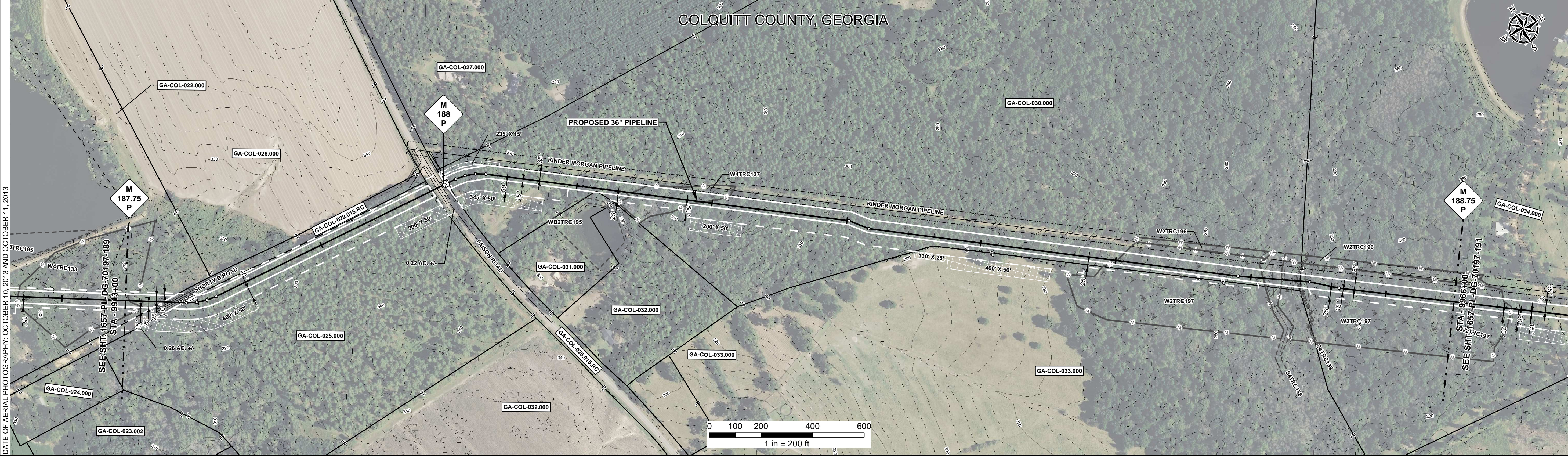
SURVEY DATA	SURVEY COMPANY: FIELD BOOK: PAGES:					
CLASS LOCATION	CLASS 1					
MINIMUM DEPTH OF COVER	3'	5'	3'	5'	3'	5'
PIPE MATERIAL	①	②	①	②	①	②
	143'	88'	1052'	84'	3180'	187'
	31 GPW, 14' C-C	46 GPW, 14' C-C	41 GPW, 14' C-C			

ALIGNMENT DETAIL

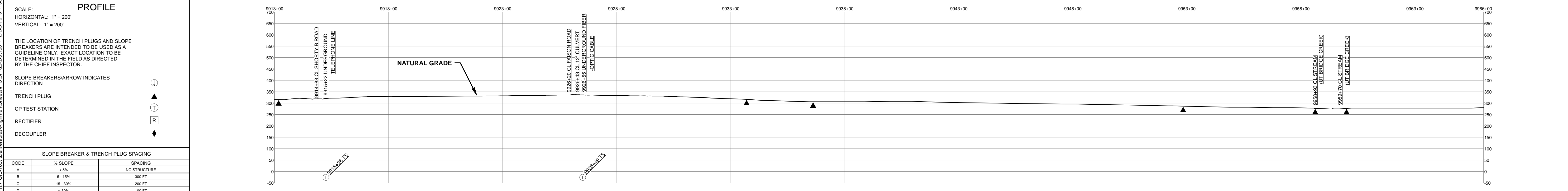
PROPOSED PIPELINE
 PROPOSED PERMANENT EASEMENT
 TEMP WORKSPACE
 ADD. TEMP WORKSPACE
 EASEMENT LINE
 CL STREAM/CREEK/DITCH
 EDGE OF WATER
 CL LEVEE
 FIELD DELINEATED WETLAND
 STREAM/DRAIN/WATERBODY BNDRY
 CL ROAD
 EDGE OF ROAD/PAVEMENT/CURB
 CL CULVERT
 CL RAILROAD
 ACCESS ROAD (PAR/TAR)
 STRUCTURE
 CONTOUR MAJOR (EVERY 10')
 CONTOUR MINOR (EVERY 2')
 PIPELINE MILEPOST
 PIPELINE MILEPOST 10TH
 PROPERTY LINE
 UNDERGROUND WATERLINE
 UNDERGROUND COM. CABLE
 UNDERGROUND POWERLINE
 UNDERGROUND SANITARY SEWER
 OVERHEAD POWERLINE
 OVERHEAD TELEPHONE
 VERIFIED PIPELINE
 FENCE
 TOP / TOE

TRANS. TOWER
 GUY ANCHOR
 HDD ENTRY/EXIT
 FIRE HYDRANT
 UTILITY POLE
 AERIAL MARKER
 ELEC. WATER, SAN. SEWER, GAS
 TELE. & STORM DRAIN MANHOLES

WELL
 SEPTIC
 VALVE
 METER
 SPREAD BREAK



REFERENCE DRAWING	1657-PL-DG-34507	1657-PL-DG-34501																		
ENVIRONMENTAL SURVEY DATA	W4TRC133 PFO				W4TRC137 PFO															
SENSITIVE AREAS	8, 18	6a, 6b, 8, 18		8, 18		6a, 6b, 8, 18						8, 18								



HYDROSTATIC TEST SECTION		REFERENCE DRAWINGS		REVISIONS			MATERIALS			ENGINEERING APPROVALS				SABAL TRAIL PROJECT PROPOSED 36" PIPELINE STA. 9913+00 TO STA. 9966+00 ALIGNMENT SHEET						
DWG. NO.	DESCRIPTION	REV	DRN	DATE	DESCRIPTION	ITEM NO.	DESCRIPTION	QTY	TITLE	SIGNATURE	DATE	SIGNATURE	DATE	LOC.	YEAR	SHEET	SCALE	DWG.	REV.	
		0		06/29/2015	ISSUED FOR BID	1	36" O.D. x 0.520" W.T., API 5L X70, FBE 16 MILS w/I.D. EPOXY 1.7 MILS	4941 LF						COLQUITT COUNTY, GEORGIA	2017	190 OF 492	1" = 200'	1657-PL-DG-70197-190	1	
		1		03/14/2016	ISSUED FOR CONSTRUCTION	3	36" O.D. x 0.750" W.T., API 5L X70, FBE 16 MILS w/I.D. EPOXY 1.7 MILS	187 LF												
						4	36" O.D. x 0.750" W.T., API 5L X70, FBE 16 MILS, ARO 24 MILS, w/I.D. EPOXY 1.7 MILS	172 LF												
							GPW	GEOTEXTILE PIPE WEIGHTS, 9000 LBS	132 EA											

Document Path: H:\GIS\1657-Deliverables\Alignment\Drawings\1657-PL-DG-70197-190.mxd
 1657-PL-DG-70197-190.mxd