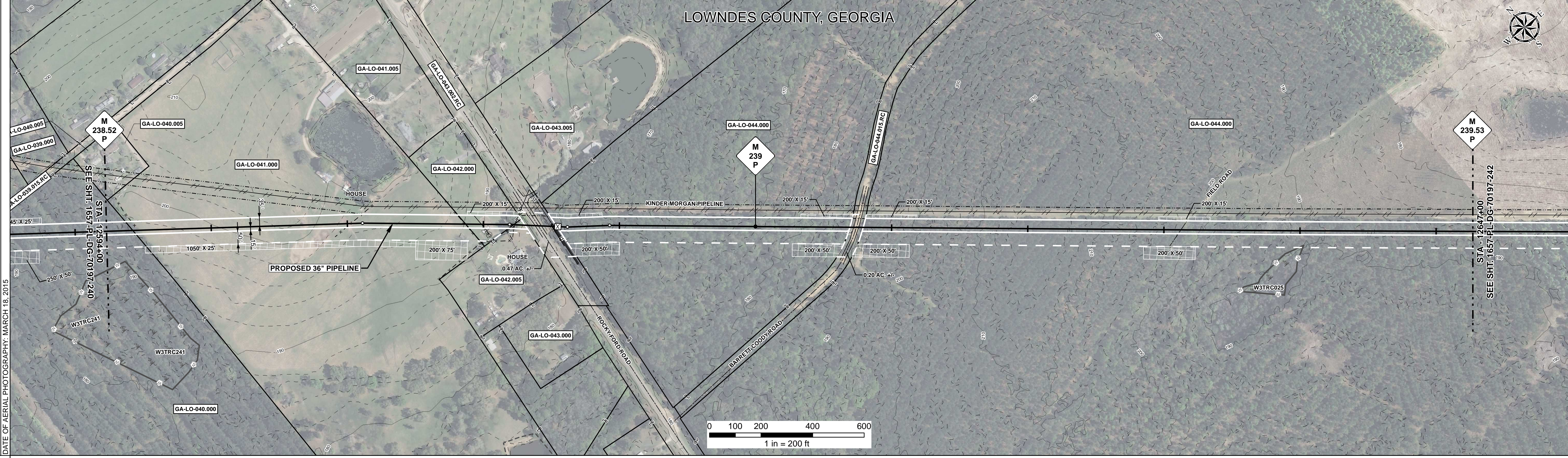


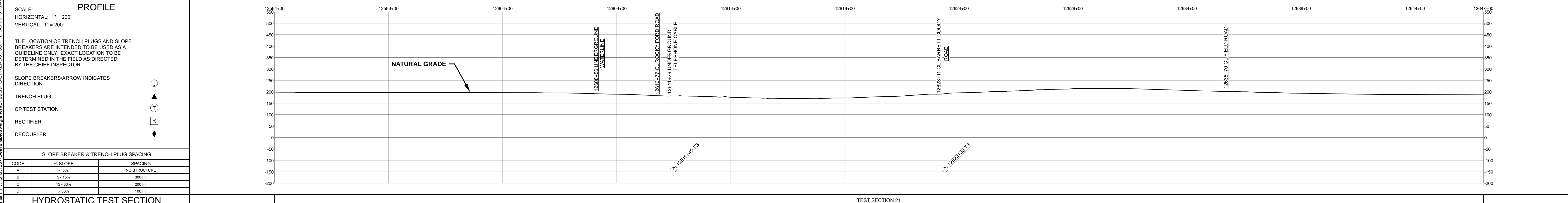
RIGHT - OF - WAY		CROSSING													
TRACT NUMBERS		GA-LO-040.000		GA-LO-041.000		GA-LO-042.000		GA-LO-043.002.RC		GA-LO-044.000		GA-LO-044.015.RC		GA-LO-044.000	
RODDAGE		6.2		78.3		11.3		2.7		7.5		68.9		3.2	
SURVEY DATA		<p>SURVEY COMPANY:</p> <p>FIELD BOOK:</p> <p>PAGES:</p> <p>12603+41 WOODGATE, 7 FT.</p> <p>12603+42 WOODGATE, 7 FT.</p> <p>12603+43 WOODGATE, 7 FT.</p> <p>12603+44 WOODGATE, 7 FT.</p> <p>12603+45 WOODGATE, 7 FT.</p> <p>12603+46 WOODGATE, 7 FT.</p> <p>12603+47 WOODGATE, 7 FT.</p> <p>12603+48 WOODGATE, 7 FT.</p> <p>12603+49 WOODGATE, 7 FT.</p> <p>12603+50 WOODGATE, 7 FT.</p> <p>12603+51 WOODGATE, 7 FT.</p> <p>12603+52 WOODGATE, 7 FT.</p> <p>12603+53 WOODGATE, 7 FT.</p> <p>12603+54 WOODGATE, 7 FT.</p> <p>12603+55 WOODGATE, 7 FT.</p> <p>12603+56 WOODGATE, 7 FT.</p> <p>12603+57 WOODGATE, 7 FT.</p> <p>12603+58 WOODGATE, 7 FT.</p> <p>12603+59 WOODGATE, 7 FT.</p> <p>12603+60 WOODGATE, 7 FT.</p> <p>12603+61 WOODGATE, 7 FT.</p> <p>12603+62 WOODGATE, 7 FT.</p> <p>12603+63 WOODGATE, 7 FT.</p> <p>12603+64 WOODGATE, 7 FT.</p> <p>12603+65 WOODGATE, 7 FT.</p> <p>12603+66 WOODGATE, 7 FT.</p> <p>12603+67 WOODGATE, 7 FT.</p> <p>12603+68 WOODGATE, 7 FT.</p> <p>12603+69 WOODGATE, 7 FT.</p> <p>12603+70 WOODGATE, 7 FT.</p> <p>12603+71 WOODGATE, 7 FT.</p> <p>12603+72 WOODGATE, 7 FT.</p> <p>12603+73 WOODGATE, 7 FT.</p> <p>12603+74 WOODGATE, 7 FT.</p> <p>12603+75 WOODGATE, 7 FT.</p> <p>12603+76 WOODGATE, 7 FT.</p> <p>12603+77 WOODGATE, 7 FT.</p> <p>12603+78 WOODGATE, 7 FT.</p> <p>12603+79 WOODGATE, 7 FT.</p> <p>12603+80 WOODGATE, 7 FT.</p> <p>12603+81 WOODGATE, 7 FT.</p> <p>12603+82 WOODGATE, 7 FT.</p> <p>12603+83 WOODGATE, 7 FT.</p> <p>12603+84 WOODGATE, 7 FT.</p> <p>12603+85 WOODGATE, 7 FT.</p> <p>12603+86 WOODGATE, 7 FT.</p> <p>12603+87 WOODGATE, 7 FT.</p> <p>12603+88 WOODGATE, 7 FT.</p> <p>12603+89 WOODGATE, 7 FT.</p> <p>12603+90 WOODGATE, 7 FT.</p> <p>12603+91 WOODGATE, 7 FT.</p> <p>12603+92 WOODGATE, 7 FT.</p> <p>12603+93 WOODGATE, 7 FT.</p> <p>12603+94 WOODGATE, 7 FT.</p> <p>12603+95 WOODGATE, 7 FT.</p> <p>12603+96 WOODGATE, 7 FT.</p> <p>12603+97 WOODGATE, 7 FT.</p> <p>12603+98 WOODGATE, 7 FT.</p> <p>12603+99 WOODGATE, 7 FT.</p> <p>12604+00 WOODGATE, 7 FT.</p>													
CLASS LOCATION		CLASS 2										CLASS 1			
MINIMUM DEPTH OF COVER		3'		4'		5'		3'		5'		3'			
PIPE MATERIAL		②		④		②		①		④		①			
ALIGNMENT DETAIL		<p>PROPOSED PIPELINE</p> <p>PROPOSED PERMANENT EASEMENT</p> <p>TEMP WORKSPACE</p> <p>ADD. TEMP. WORKSPACE</p> <p>EASEMENT LINE</p> <p>CL STREAM/CREEK/DITCH</p> <p>EDGE OF WATER</p> <p>CL LEVEE</p> <p>FIELD DELINEATED WETLAND</p> <p>STREAM/DRAIN/WATERBODY BNDRY</p> <p>CL ROAD</p> <p>EDGE OF ROAD PAVEMENT/CURB</p> <p>CL CULVERT</p> <p>CL RAILROAD</p> <p>ACCESS ROAD (PAR/TAR)</p> <p>STRUCTURE</p> <p>CONTOUR MAJOR (EVERY 10')</p> <p>CONTOUR MINOR (EVERY 2')</p> <p>PIPELINE MILEPOST</p> <p>PIPELINE MILEPOST 10TH</p> <p>PROPERTY LINE</p> <p>UNDERGROUND WATERLINE</p> <p>UNDERGROUND COM. CABLE</p> <p>UNDERGROUND POWERLINE</p> <p>UNDERGROUND SANITARY SEWER</p> <p>OVERHEAD POWERLINE</p> <p>OVERHEAD TELEPHONE</p> <p>VERIFIED PIPELINE</p> <p>FENCE</p> <p>TOP / TOE</p> <p>TRANS. TOWER</p> <p>GUY ANCHOR</p> <p>HDD ENTRY/EXIT</p> <p>FIRE HYDRANT</p> <p>UTILITY POLE</p> <p>AERIAL MARKER</p> <p>ELEC. WATER, SAN. SEWER, GAS</p> <p>TELE. & STORM DRAIN MANHOLES</p> <p>WELL</p> <p>SEPTIC</p> <p>VALVE</p> <p>METER</p> <p>SPREAD BREAK</p>													



REFERENCE DRAWING	1657-PL-DG-32475 GA-LO-043.002.RC	GA-LO-044.015.RC
-------------------	-----------------------------------	------------------

ENVIRONMENTAL SURVEY DATA	12594+00	12647+00
---------------------------	----------	----------

SENSITIVE AREAS	6a, 6b, 8, 16, 18
-----------------	-------------------



HYDROSTATIC TEST SECTION		TEST SECTION 21	
REFERENCE DRAWINGS		REVISIONS	
DWG. NO.	DESCRIPTION	REV	DRN
		0	06/29/2015
		1	03/14/2016
MATERIALS		ITEM NO.	
DESCRIPTION		QTY	
36" O.D. x 0.520" W.T., API 5L X70, FBE 16 MILS w/I.D. EPOXY 1.7 MILS		2732 LF	
36" O.D. x 0.625" W.T., API 5L X70, FBE 16 MILS w/I.D. EPOXY 1.7 MILS		2302 LF	
36" O.D. x 0.750" W.T., API 5L X70, FBE 16 MILS, ARO 24 MILS, w/I.D. EPOXY 1.7 MILS		266 LF	
ENGINEERING APPROVALS		SABAL TRAIL PROJECT	
TITLE		PROPOSED 36" PIPELINE	
SIGNATURE		STA. 12594+00 TO STA. 12647+00	
DATE		ALIGNMENT SHEET	
CONSTRUCTION		LOC. LOWNDES COUNTY, GEORGIA	
DATE	DATE	YEAR: 2017	
06/29/2015	03/14/2016	SHEET: 241 OF 492	
06/29/2015	03/14/2016	SCALE: 1" = 200'	
06/29/2015	03/14/2016	DWG. 1657-PL-DG-70197-241	
06/29/2015	03/14/2016	REV. 1	

Document Path: H:\GIS\1657-Deliverables\Alignment\Sheets\1657-PL-DG-70197-241.mxd

