

RIGHT - OF - WAY		CROSSING										
TRACT NUMBERS		FL-HA-000.110	FL-HA-000.115	FL-HA-000.116.CR	FL-HA-000.115	FL-HA-000.120	FL-HA-000.125	FL-HA-000.130	FL-HA-000.131.CR	FL-HA-000.135		
RODDAGE		13288+00	13288+02	13288+88 13291+24	13294+83	13319+23	13323+73	13331+79	13332+33	13334+23	13336+00	
SURVEY DATA		<p>SURVEY COMPANY:</p> <p>FIELD BOOK:</p> <p>PAGES:</p> <p>13288+44 KING CORNER 19 LT. 13288+44 KING CORNER 20 GATE 29 LT. 13288+44 KING CORNER 21 GATE 29 LT. 13288+44 KING CORNER 22 GATE 29 LT. 13288+44 KING CORNER 23 GATE 29 LT. 13288+44 KING CORNER 24 GATE 29 LT. 13288+44 KING CORNER 25 GATE 29 LT. 13288+44 KING CORNER 26 GATE 29 LT. 13288+44 KING CORNER 27 GATE 29 LT. 13288+44 KING CORNER 28 GATE 29 LT. 13288+44 KING CORNER 29 GATE 29 LT. 13288+44 KING CORNER 30 GATE 29 LT. 13288+44 KING CORNER 31 GATE 29 LT. 13288+44 KING CORNER 32 GATE 29 LT. 13288+44 KING CORNER 33 GATE 29 LT. 13288+44 KING CORNER 34 GATE 29 LT. 13288+44 KING CORNER 35 GATE 29 LT. 13288+44 KING CORNER 36 GATE 29 LT. 13288+44 KING CORNER 37 GATE 29 LT. 13288+44 KING CORNER 38 GATE 29 LT. 13288+44 KING CORNER 39 GATE 29 LT. 13288+44 KING CORNER 40 GATE 29 LT. 13288+44 KING CORNER 41 GATE 29 LT. 13288+44 KING CORNER 42 GATE 29 LT. 13288+44 KING CORNER 43 GATE 29 LT. 13288+44 KING CORNER 44 GATE 29 LT. 13288+44 KING CORNER 45 GATE 29 LT. 13288+44 KING CORNER 46 GATE 29 LT. 13288+44 KING CORNER 47 GATE 29 LT. 13288+44 KING CORNER 48 GATE 29 LT. 13288+44 KING CORNER 49 GATE 29 LT. 13288+44 KING CORNER 50 GATE 29 LT.</p>										
CLASS LOCATION		CLASS 1										
MINIMUM DEPTH OF COVER		5'										
PIPE MATERIAL		SR										
ALIGNMENT DETAIL		<p>PROPOSED PIPELINE</p> <p>PROPOSED PERMANENT EASEMENT</p> <p>TEMP WORKSPACE</p> <p>ADD. TEMP. WORKSPACE</p> <p>EASEMENT LINE</p> <p>CL STREAM/CREEK/DITCH</p> <p>EDGE OF WATER</p> <p>CL LEVEE</p> <p>FIELD DELINEATED WETLAND</p> <p>STREAM/DRAIN/WATERBODY BNDRY</p> <p>CL ROAD</p> <p>EDGE OF ROAD/PAVEMENT/CURB</p> <p>CL CULVERT</p> <p>CL RAILROAD</p> <p>ACCESS ROAD (PAR/TAR)</p> <p>STRUCTURE</p> <p>CONTOUR MAJOR (EVERY 10')</p> <p>CONTOUR MINOR (EVERY 2')</p> <p>PIPELINE MILEPOST</p> <p>PIPELINE MILEPOST 10TH</p> <p>PROPERTY LINE</p> <p>UNDERGROUND WATERLINE</p> <p>UNDERGROUND COM. CABLE</p> <p>UNDERGROUND POWERLINE</p> <p>UNDERGROUND SANITARY SEWER</p> <p>OVERHEAD POWERLINE</p> <p>OVERHEAD TELEPHONE</p> <p>VERIFIED PIPELINE</p> <p>FENCE</p> <p>TOP / TOE</p> <p>TRANS. TOWER</p> <p>GUY ANCHOR</p> <p>HDD ENTRY/EXIT</p> <p>FIRE HYDRANT</p> <p>UTILITY POLE</p> <p>AERIAL MARKER</p> <p>ELEC. WATER, SAN. SEWER, GAS TELE. & STORM DRAIN MANHOLES</p> <p>WELL</p> <p>SEPTIC</p> <p>VALVE</p> <p>METER</p> <p>SPREAD BREAK</p>										

ALIGNMENT DETAIL

DATE OF AERIAL PHOTOGRAPHY: MAY 27, 2013

REFERENCE DRAWING

1657-PL-DG-34518

ENVIRONMENTAL SURVEY DATA

SENSITIVE AREAS

6a, 6b, 8, 15, 16, 18

PROFILE

SCALE: HORIZONTAL: 1" = 200'

VERTICAL: 1" = 200'

THE LOCATION OF TRENCH PLUGS AND SLOPE BREAKERS ARE INTENDED TO BE USED AS A GUIDELINE ONLY. EXACT LOCATION TO BE DETERMINED IN THE FIELD AS DIRECTED BY THE CHIEF INSPECTOR.

SLOPE BREAKERS/ARROW INDICATES DIRECTION

TRENCH PLUG

CP TEST STATION

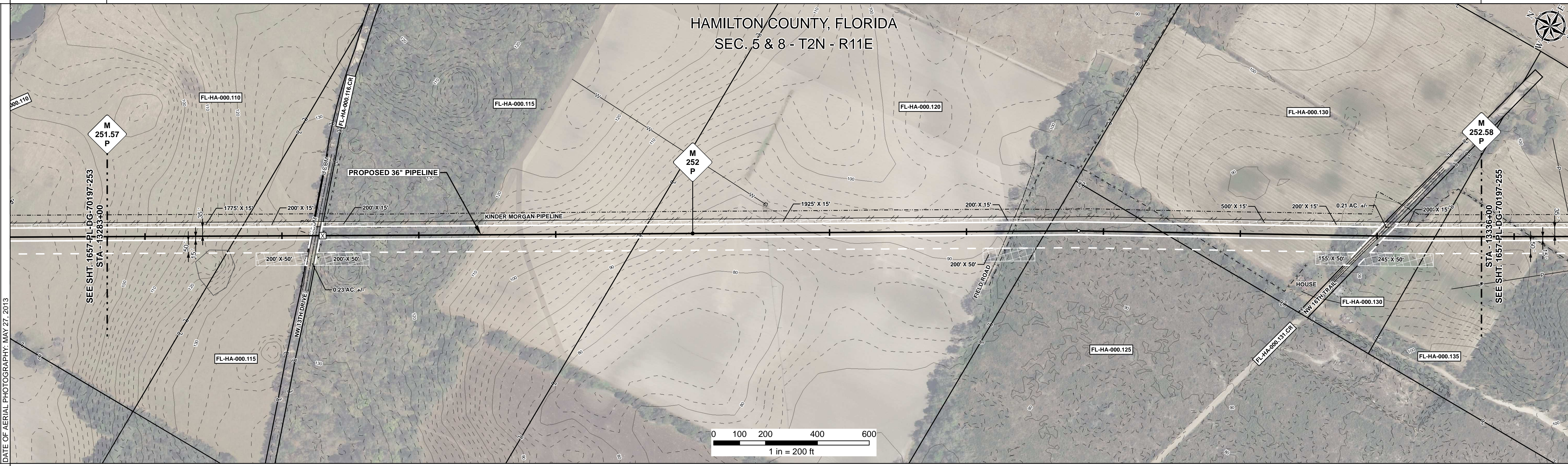
RECTIFIER

DECOUPLER

CODE	% SLOPE	SPACING
A	< 5%	NO STRUCTURE
B	5 - 15%	300 FT
C	15 - 30%	200 FT
D	> 30%	100 FT

HYDROSTATIC TEST SECTION

TEST SECTION 22



DWG. NO.	DESCRIPTION	REV	DRN	DATE	REVISIONS	DESCRIPTION	ITEM NO.	DESCRIPTION	QTY	ENGINEERING APPROVALS				SABAL TRAIL PROJECT PROPOSED 36" PIPELINE STA. 13283+00 TO STA. 13336+00 ALIGNMENT SHEET LOC. HAMILTON COUNTY, FLORIDA YEAR: 2017 SHEET: 254 OF 492 SCALE: 1" = 200' DWG. 1657-PL-DG-70197-254 REV. 1	
										BID		CONSTRUCTION			
										TITLE	SIGNATURE	DATE	SIGNATURE		DATE
		0		06/29/2015	ISSUED FOR BID		1	36" O.D. x 0.520" W.T., API 5L X70, FBE 16 MILS w/I.D. EPOXY 1.7 MILS	5191 LF						
		1		03/14/2016	ISSUED FOR CONSTRUCTION		4	36" O.D. x 0.750" W.T., API 5L X70, FBE 16 MILS, ARO 24 MILS, w/I.D. EPOXY 1.7 MILS	109 LF						