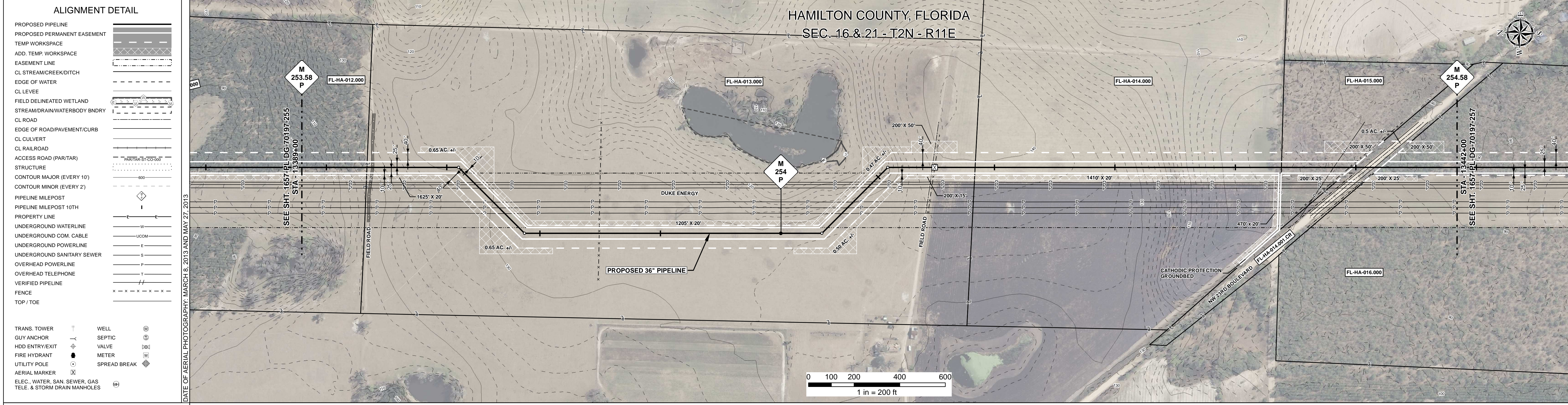


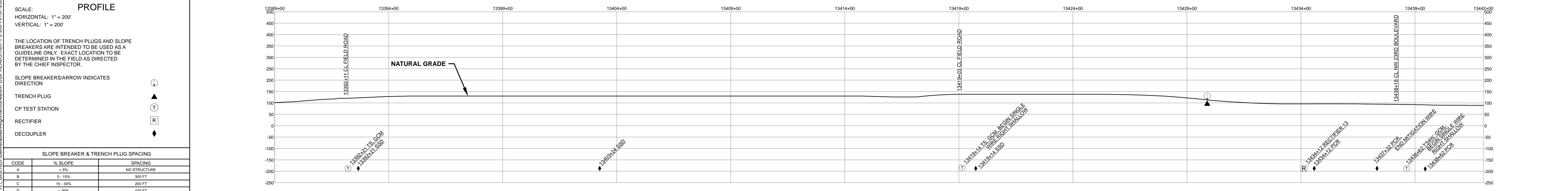
RIGHT - OF - WAY	TRACT NUMBERS	FL-HA-012.000		FL-HA-013.000			FL-HA-014.000		FL-HA-015.000	FL-HA-014.001.CR	FL-HA-016.000
	RODDAGE	17.3		176.1			81.3		19.0	7.5	20.0
SURVEY DATA	SURVEY COMPANY:										
	FIELD BOOK:										
PAGES:											

CLASS LOCATION	CLASS 1											
MINIMUM DEPTH OF COVER	3'	5'	3'	5'	3'	5'	3'	5'	4'	3'	5'	3'
PIPE MATERIAL	SR	SR	SR	SR	SR	SR	SR	SR	SR	SR	SR	SR
ALIGNMENT DETAIL												



REFERENCE DRAWING	1657-PL-DG-34505										
ENVIRONMENTAL SURVEY DATA											

SENSITIVE AREAS	6a, 6b, 8, 11, 15, 16, 18	6a, 6b, 8, 11, 15, 16, 18	6a, 6b, 8, 11, 15, 16, 18	6a, 6b, 8, 11, 15, 16, 18	6a, 6b, 8, 11, 15, 16, 18	6a, 6b, 8, 11, 15, 16, 18	6a, 6b, 8, 11, 15, 16, 18	6a, 6b, 8, 11, 15, 16, 18	6a, 6b, 8, 11, 15, 16, 18	6a, 6b, 8, 11, 15, 16, 18	6a, 6b, 8, 11, 15, 16, 18
-----------------	---------------------------	---------------------------	---------------------------	---------------------------	---------------------------	---------------------------	---------------------------	---------------------------	---------------------------	---------------------------	---------------------------



HYDROSTATIC TEST SECTION				TEST SECTION 22				ENGINEERING APPROVALS				SABAL TRAIL PROJECT PROPOSED 36" PIPELINE STA. 13389+00 TO STA. 13442+00 ALIGNMENT SHEET						
REFERENCE DRAWINGS		REVISIONS		MATERIALS		MATERIALS		MATERIALS		MATERIALS		MATERIALS		MATERIALS		MATERIALS		
DWG. NO.	DESCRIPTION	REV	DRN	DATE	DESCRIPTION	ITEM NO.	DESCRIPTION	QTY	TITLE	SIGNATURE	DATE	SIGNATURE	DATE	YEAR:	SHEET:	SCALE:	DWG.:	
1657-PL-DG-35212	CP GROUNDBED #13	0		06/29/2015	ISSUED FOR BID	1	36" O.D. x 0.520" W.T., API 5L X70, FBE 16 MILS w/I.D. EPOXY 1.7 MILS	5144 LF	DRAWN BY:	GIE	01/04/2016	FRS	06/29/2015	2017	256 OF 492	1" = 200'	1657-PL-DG-70197-256	
		1		03/14/2016	ISSUED FOR CONSTRUCTION	4	36" O.D. x 0.750" W.T., API 5L X70, FBE 16 MILS, ARO 24 MILS, w/I.D. EPOXY 1.7 MILS	156 LF	CHECKED BY:	GIE		FRS	03/14/2016					REV. 1
						3R	3R ELBOW, HIGH STRENGTH WROUGHT BUTT-WELDED FITTING, 36" O.D.	4 EA	CHK. DATE:			JC						