

| | | | | | | | | | |
|------------------------|---|---------------|------------------|---------------|--|--|--|--|--|
| RIGHT - OF - WAY | | | | | | | | | |
| TRACT NUMBERS | | FL-GI-045.000 | FL-GI-045.500.CR | FL-GI-046.000 | | | | | |
| RODDAGE | | 137.6 | 6.1 | 177.6 | | | | | |
| SURVEY DATA | SURVEY COMPANY: FIELD BOOK: PAGES: CLASS 1 17427+70, 17428+70, 17429+70, 17430+70, 17431+70, 17432+70, 17433+70, 17434+70, 17435+70, 17436+70, 17437+70, 17438+70, 17439+70, 17440+70, 17441+70, 17442+70, 17443+70, 17444+70, 17445+70, 17446+70, 17447+70, 17448+70, 17449+70, 17450+70, 17451+70, 17452+70, 17453+70, 17454+70, 17455+70, 17456+70, 17457+70, 17458+70 | | | | | | | | |
| CLASS LOCATION | CLASS 1 | | | | | | | | |
| MINIMUM DEPTH OF COVER | 4', 5', 4', 5', 4', 5', 4' | | | | | | | | |
| PIPE MATERIAL | ①, ④, ①, ④, ①, ④, ① | | | | | | | | |

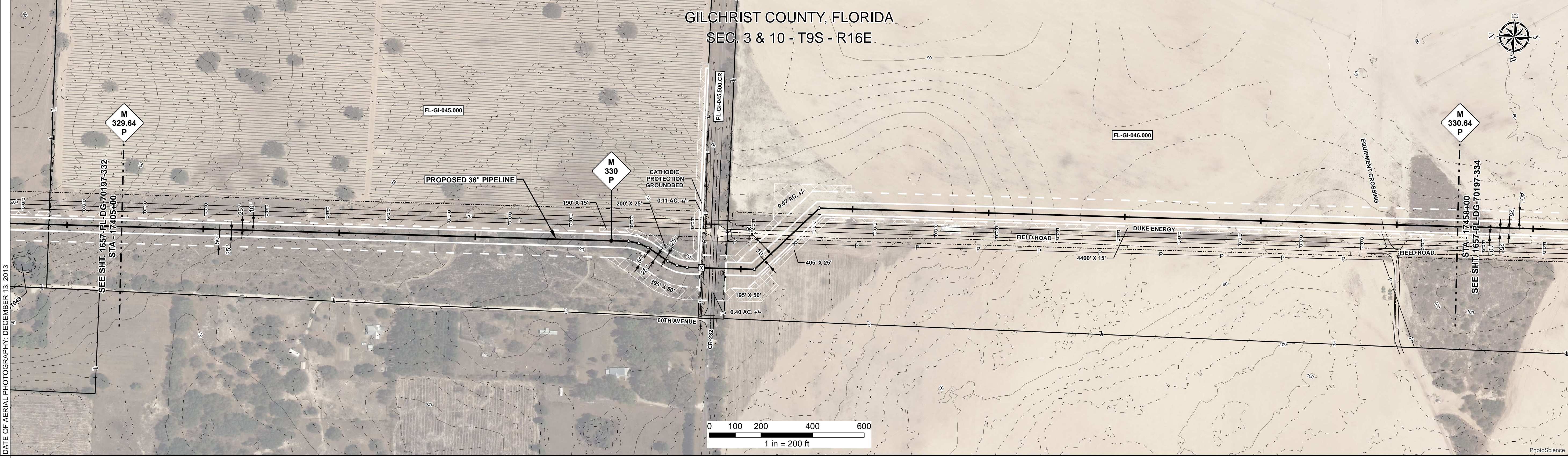
ALIGNMENT DETAIL

PROPOSED PIPELINE
 PROPOSED PERMANENT EASEMENT
 TEMP WORKSPACE
 ADD. TEMP. WORKSPACE
 EASEMENT LINE
 CL STREAM/CREEK/DITCH
 EDGE OF WATER
 CL LEVEE
 FIELD DELINEATED WETLAND
 STREAM/DRAIN/WATERBODY BNDRY
 CL ROAD
 EDGE OF ROAD/PAVEMENT/CURB
 CL CULVERT
 CL RAILROAD
 ACCESS ROAD (PAR/TAR)
 STRUCTURE
 CONTOUR MAJOR (EVERY 10')
 CONTOUR MINOR (EVERY 2')
 PIPELINE MILEPOST
 PIPELINE MILEPOST 10TH
 PROPERTY LINE
 UNDERGROUND WATERLINE
 UNDERGROUND COM. CABLE
 UNDERGROUND POWERLINE
 UNDERGROUND SANITARY SEWER
 OVERHEAD POWERLINE
 OVERHEAD TELEPHONE
 VERIFIED PIPELINE
 FENCE
 TOP / TOE

TRANS. TOWER
 GUY ANCHOR
 HDD ENTRY/EXIT
 FIRE HYDRANT
 UTILITY POLE
 AERIAL MARKER
 ELEC. WATER, SAN. SEWER, GAS
 TELE. & STORM DRAIN MANHOLES

WELL
 SEPTIC
 VALVE
 METER
 SPREAD BREAK

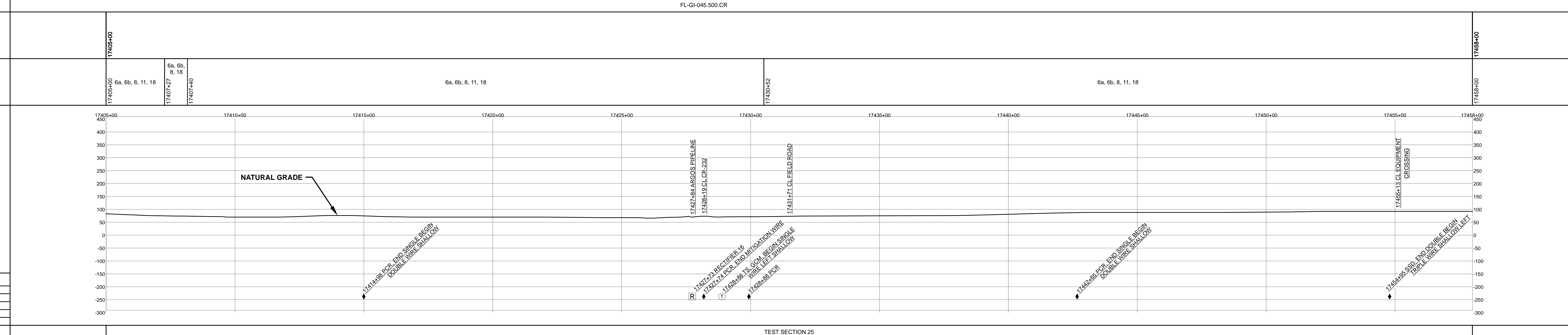
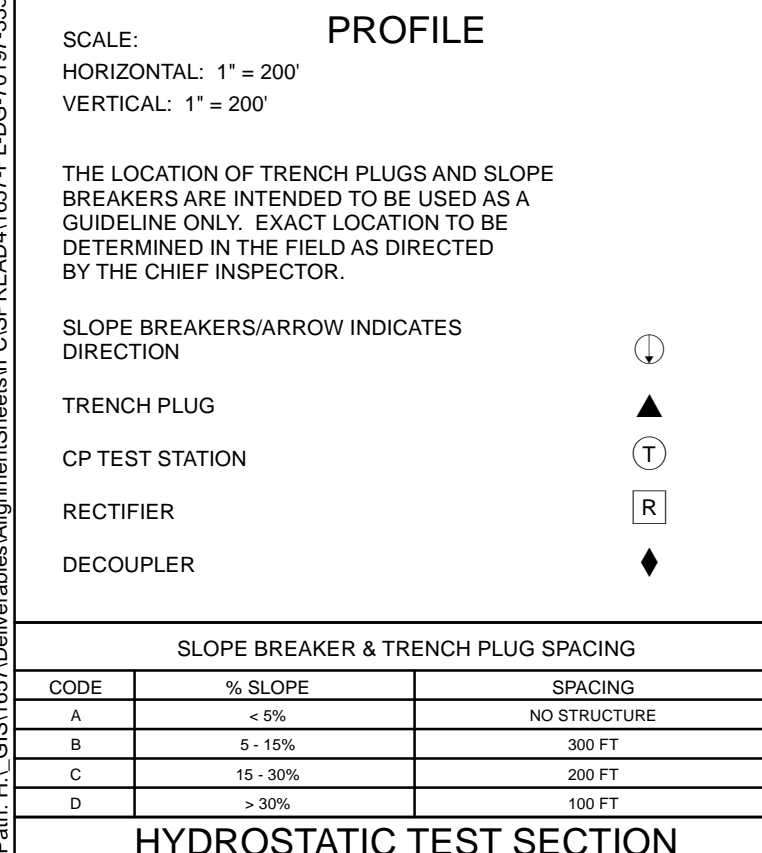
DATE OF AERIAL PHOTOGRAPHY: DECEMBER 13, 2013



REFERENCE DRAWING

ENVIRONMENTAL SURVEY DATA

SENSITIVE AREAS



HYDROSTATIC TEST SECTION

| REFERENCE DRAWINGS | | REVISIONS | | | MATERIALS | | | |
|--------------------|------------------|-----------|-----|------------|-------------------------|----------|---|---------|
| DWG. NO. | DESCRIPTION | REV | DRN | DATE | DESCRIPTION | ITEM NO. | DESCRIPTION | QTY |
| 1657-PL-DG-35215 | CP GROUNDBED #16 | 0 | | 06/29/2015 | ISSUED FOR BID | 1 | 36" O.D. x 0.520" W.T., API 5L X70, FBE 16 MILS w/I.D. EPOXY 1.7 MILS | 5190 LF |
| | | 1 | | 03/14/2016 | ISSUED FOR CONSTRUCTION | 4 | 36" O.D. x 0.750" W.T., API 5L X70, FBE 16 MILS, ARO 24 MILS, w/I.D. EPOXY 1.7 MILS | 110 LF |
| | | | | | | 3R | 3R ELBOW, HIGH STRENGTH WROUGHT BUTT-WELDED FITTING, 36" O.D. | 2 EA |

| ENGINEERING APPROVALS | | | |
|-----------------------|-----------|--------------|-----------|
| BID | | CONSTRUCTION | |
| TITLE | SIGNATURE | DATE | SIGNATURE |
| DRWN BY: GIE | FSR | 06/29/2015 | FSR |
| DRN DATE: 01/04/2016 | | | |
| CHECKED BY: GIE | DRS | 06/29/2015 | JC |
| CHK. DATE: | | | |

**SABAL TRAIL PROJECT
 PROPOSED 36" PIPELINE
 STA. 17405+00 TO STA. 17458+00
 ALIGNMENT SHEET**

LOC. GILCHRIST COUNTY, FLORIDA

YEAR: 2017 SHEET: 333 OF 492 SCALE: 1" = 200' DWG. 1657-PL-DG-70197-333 REV. 1

Document Path: H:\GIS\1657-Deliverables\Alignment\Sheet\1657-PL-DG-70197-333.mxd