

RIGHT - OF - WAY	CROSSING		FL-MA-004.000	FL-MA-004.500.CR	FL-MA-005.000	FL-MA-006.000
TRACT NUMBERS			19734+00	19735+00	19736+00	19737+00
RODDAGE			11.6	4.3	192.4	112.9
SURVEY DATA	<p>SURVEY COMPANY:</p> <p>FIELD BOOK:</p> <p>PAGES:</p> <p>19734+00 P1 = 7.21 385 EIT 19735+00 P1 = 2.39 385 EIT 19736+00 P1 = 1.00 385 EIT 19737+00 P1 = 1.00 385 EIT 19738+00 P1 = 1.00 385 EIT 19739+00 P1 = 1.00 385 EIT 19740+00 P1 = 1.00 385 EIT 19741+00 P1 = 1.00 385 EIT 19742+00 P1 = 1.00 385 EIT 19743+00 P1 = 1.00 385 EIT 19744+00 P1 = 1.00 385 EIT 19745+00 P1 = 1.00 385 EIT 19746+00 P1 = 1.00 385 EIT 19747+00 P1 = 1.00 385 EIT 19748+00 P1 = 1.00 385 EIT 19749+00 P1 = 1.00 385 EIT 19750+00 P1 = 1.00 385 EIT 19751+00 P1 = 1.00 385 EIT 19752+00 P1 = 1.00 385 EIT 19753+00 P1 = 1.00 385 EIT 19754+00 P1 = 1.00 385 EIT 19755+00 P1 = 1.00 385 EIT 19756+00 P1 = 1.00 385 EIT 19757+00 P1 = 1.00 385 EIT 19758+00 P1 = 1.00 385 EIT 19759+00 P1 = 1.00 385 EIT 19760+00 P1 = 1.00 385 EIT 19761+00 P1 = 1.00 385 EIT 19762+00 P1 = 1.00 385 EIT 19763+00 P1 = 1.00 385 EIT 19764+00 P1 = 1.00 385 EIT 19765+00 P1 = 1.00 385 EIT 19766+00 P1 = 1.00 385 EIT 19767+00 P1 = 1.00 385 EIT 19768+00 P1 = 1.00 385 EIT 19769+00 P1 = 1.00 385 EIT 19770+00 P1 = 1.00 385 EIT 19771+00 P1 = 1.00 385 EIT 19772+00 P1 = 1.00 385 EIT 19773+00 P1 = 1.00 385 EIT 19774+00 P1 = 1.00 385 EIT 19775+00 P1 = 1.00 385 EIT 19776+00 P1 = 1.00 385 EIT 19777+00 P1 = 1.00 385 EIT 19778+00 P1 = 1.00 385 EIT 19779+00 P1 = 1.00 385 EIT 19780+00 P1 = 1.00 385 EIT 19781+00 P1 = 1.00 385 EIT 19782+00 P1 = 1.00 385 EIT 19783+00 P1 = 1.00 385 EIT 19784+00 P1 = 1.00 385 EIT 19785+00 P1 = 1.00 385 EIT 19786+00 P1 = 1.00 385 EIT 19787+00 P1 = 1.00 385 EIT 19788+00 P1 = 1.00 385 EIT 19789+00 P1 = 1.00 385 EIT 19790+00 P1 = 1.00 385 EIT 19791+00 P1 = 1.00 385 EIT 19792+00 P1 = 1.00 385 EIT 19793+00 P1 = 1.00 385 EIT 19794+00 P1 = 1.00 385 EIT 19795+00 P1 = 1.00 385 EIT 19796+00 P1 = 1.00 385 EIT 19797+00 P1 = 1.00 385 EIT 19798+00 P1 = 1.00 385 EIT 19799+00 P1 = 1.00 385 EIT 19800+00 P1 = 1.00 385 EIT</p>					
CLASS LOCATION	CLASS 1					
MINIMUM DEPTH OF COVER			4'	5'	4'	5'
PIPE MATERIAL			①	②	①	①
ALIGNMENT DETAIL	<p>PROPOSED PIPELINE</p> <p>PROPOSED PERMANENT EASEMENT</p> <p>TEMP WORKSPACE</p> <p>ADD. TEMP WORKSPACE</p> <p>EASEMENT LINE</p> <p>CL STREAM/CREEK/DITCH</p> <p>EDGE OF WATER</p> <p>CL LEVEE</p> <p>FIELD DELINEATED WETLAND</p> <p>STREAM/DRAIN/WATERBODY BNDRY</p> <p>CL ROAD</p> <p>EDGE OF ROAD/PAVEMENT/CURB</p> <p>CL CULVERT</p> <p>CL RAILROAD</p> <p>ACCESS ROAD (PAR/TAR)</p> <p>STRUCTURE</p> <p>CONTOUR MAJOR (EVERY 10')</p> <p>CONTOUR MINOR (EVERY 2')</p> <p>PIPELINE MILEPOST</p> <p>PIPELINE MILEPOST 10TH</p> <p>PROPERTY LINE</p> <p>UNDERGROUND WATERLINE</p> <p>UNDERGROUND COM. CABLE</p> <p>UNDERGROUND POWERLINE</p> <p>UNDERGROUND SANITARY SEWER</p> <p>OVERHEAD POWERLINE</p> <p>OVERHEAD TELEPHONE</p> <p>VERIFIED PIPELINE</p> <p>FENCE</p> <p>TOP / TOE</p> <p>TRANS. TOWER</p> <p>GUY ANCHOR</p> <p>HDD ENTRY/EXIT</p> <p>FIRE HYDRANT</p> <p>UTILITY POLE</p> <p>AERIAL MARKER</p> <p>ELEC. WATER, SAN, SEWER, GAS TELE. &amp; STORM DRAIN MANHOLES</p> <p>WELL</p> <p>SEPTIC</p> <p>VALVE</p> <p>METER</p> <p>SPREAD BREAK</p>					

**ALIGNMENT DETAIL**

DATE OF AERIAL PHOTOGRAPHY: MARCH 13, 2013

PROPOSED PIPELINE

PROPOSED PERMANENT EASEMENT

TEMP WORKSPACE

ADD. TEMP WORKSPACE

EASEMENT LINE

CL STREAM/CREEK/DITCH

EDGE OF WATER

CL LEVEE

FIELD DELINEATED WETLAND

STREAM/DRAIN/WATERBODY BNDRY

CL ROAD

EDGE OF ROAD/PAVEMENT/CURB

CL CULVERT

CL RAILROAD

ACCESS ROAD (PAR/TAR)

STRUCTURE

CONTOUR MAJOR (EVERY 10')

CONTOUR MINOR (EVERY 2')

PIPELINE MILEPOST

PIPELINE MILEPOST 10TH

PROPERTY LINE

UNDERGROUND WATERLINE

UNDERGROUND COM. CABLE

UNDERGROUND POWERLINE

UNDERGROUND SANITARY SEWER

OVERHEAD POWERLINE

OVERHEAD TELEPHONE

VERIFIED PIPELINE

FENCE

TOP / TOE

TRANS. TOWER

GUY ANCHOR

HDD ENTRY/EXIT

FIRE HYDRANT

UTILITY POLE

AERIAL MARKER

ELEC. WATER, SAN, SEWER, GAS TELE. & STORM DRAIN MANHOLES

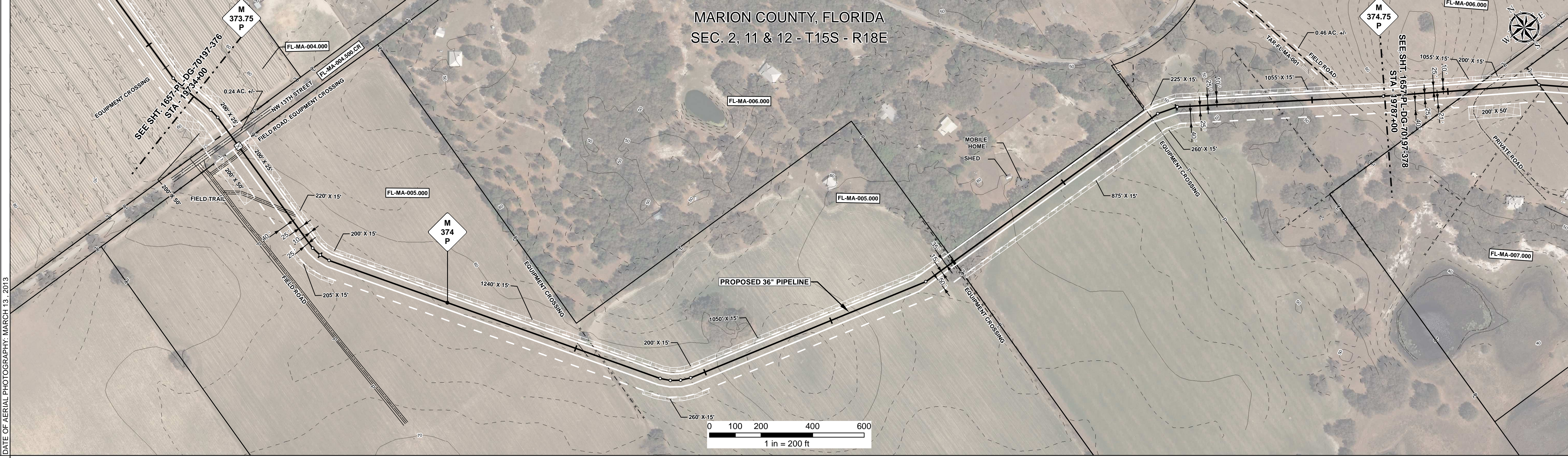
WELL

SEPTIC

VALVE

METER

SPREAD BREAK



REFERENCE DRAWING	FL-MA-004.500.CR	1657-PL-DG-32488
-------------------	------------------	------------------

ENVIRONMENTAL SURVEY DATA	19734+00	19787+00
---------------------------	----------	----------

SENSITIVE AREAS	19734+00	6a, 6b, 8, 15, 16, 18	19734+00	6a, 6b, 8, 15, 16, 18	19735+00	6a, 6b, 8, 15, 16, 18	19736+00	6a, 6b, 8, 15, 16, 18	19737+00	6a, 6b, 8, 15, 16, 18	19738+00	6a, 6b, 8, 15, 16, 18	19739+00	6a, 6b, 8, 15, 16, 18	19740+00	6a, 6b, 8, 15, 16, 18	19741+00	6a, 6b, 8, 15, 16, 18	19742+00	6a, 6b, 8, 15, 16, 18	19743+00	6a, 6b, 8, 15, 16, 18	19744+00	6a, 6b, 8, 15, 16, 18	19745+00	6a, 6b, 8, 15, 16, 18	19746+00	6a, 6b, 8, 15, 16, 18	19747+00	6a, 6b, 8, 15, 16, 18	19748+00	6a, 6b, 8, 15, 16, 18	19749+00	6a, 6b, 8, 15, 16, 18	19750+00	6a, 6b, 8, 15, 16, 18	19751+00	6a, 6b, 8, 15, 16, 18	19752+00	6a, 6b, 8, 15, 16, 18	19753+00	6a, 6b, 8, 15, 16, 18	19754+00	6a, 6b, 8, 15, 16, 18	19755+00	6a, 6b, 8, 15, 16, 18	19756+00	6a, 6b, 8, 15, 16, 18	19757+00	6a, 6b, 8, 15, 16, 18	19758+00	6a, 6b, 8, 15, 16, 18	19759+00	6a, 6b, 8, 15, 16, 18	19760+00	6a, 6b, 8, 15, 16, 18	19761+00	6a, 6b, 8, 15, 16, 18	19762+00	6a, 6b, 8, 15, 16, 18	19763+00	6a, 6b, 8, 15, 16, 18	19764+00	6a, 6b, 8, 15, 16, 18	19765+00	6a, 6b, 8, 15, 16, 18	19766+00	6a, 6b, 8, 15, 16, 18	19767+00	6a, 6b, 8, 15, 16, 18	19768+00	6a, 6b, 8, 15, 16, 18	19769+00	6a, 6b, 8, 15, 16, 18	19770+00	6a, 6b, 8, 15, 16, 18	19771+00	6a, 6b, 8, 15, 16, 18	19772+00	6a, 6b, 8, 15, 16, 18	19773+00	6a, 6b, 8, 15, 16, 18	19774+00	6a, 6b, 8, 15, 16, 18	19775+00	6a, 6b, 8, 15, 16, 18	19776+00	6a, 6b, 8, 15, 16, 18	19777+00	6a, 6b, 8, 15, 16, 18	19778+00	6a, 6b, 8, 15, 16, 18	19779+00	6a, 6b, 8, 15, 16, 18	19780+00	6a, 6b, 8, 15, 16, 18	19781+00	6a, 6b, 8, 15, 16, 18	19782+00	6a, 6b, 8, 15, 16, 18	19783+00	6a, 6b, 8, 15, 16, 18	19784+00	6a, 6b, 8, 15, 16, 18	19785+00	6a, 6b, 8, 15, 16, 18	19786+00	6a, 6b, 8, 15, 16, 18	19787+00	6a, 6b, 8, 15, 16, 18
-----------------	----------	-----------------------	----------	-----------------------	----------	-----------------------	----------	-----------------------	----------	-----------------------	----------	-----------------------	----------	-----------------------	----------	-----------------------	----------	-----------------------	----------	-----------------------	----------	-----------------------	----------	-----------------------	----------	-----------------------	----------	-----------------------	----------	-----------------------	----------	-----------------------	----------	-----------------------	----------	-----------------------	----------	-----------------------	----------	-----------------------	----------	-----------------------	----------	-----------------------	----------	-----------------------	----------	-----------------------	----------	-----------------------	----------	-----------------------	----------	-----------------------	----------	-----------------------	----------	-----------------------	----------	-----------------------	----------	-----------------------	----------	-----------------------	----------	-----------------------	----------	-----------------------	----------	-----------------------	----------	-----------------------	----------	-----------------------	----------	-----------------------	----------	-----------------------	----------	-----------------------	----------	-----------------------	----------	-----------------------	----------	-----------------------	----------	-----------------------	----------	-----------------------	----------	-----------------------	----------	-----------------------	----------	-----------------------	----------	-----------------------	----------	-----------------------	----------	-----------------------	----------	-----------------------	----------	-----------------------	----------	-----------------------	----------	-----------------------

**PROFILE**

SCALE:  
HORIZONTAL: 1" = 200'  
VERTICAL: 1" = 200'

THE LOCATION OF TRENCH PLUGS AND SLOPE BREAKERS ARE INTENDED TO BE USED AS A GUIDELINE ONLY. EXACT LOCATION TO BE DETERMINED IN THE FIELD AS DIRECTED BY THE CHIEF INSPECTOR.

SLOPE BREAKERS/ARROW INDICATES DIRECTION

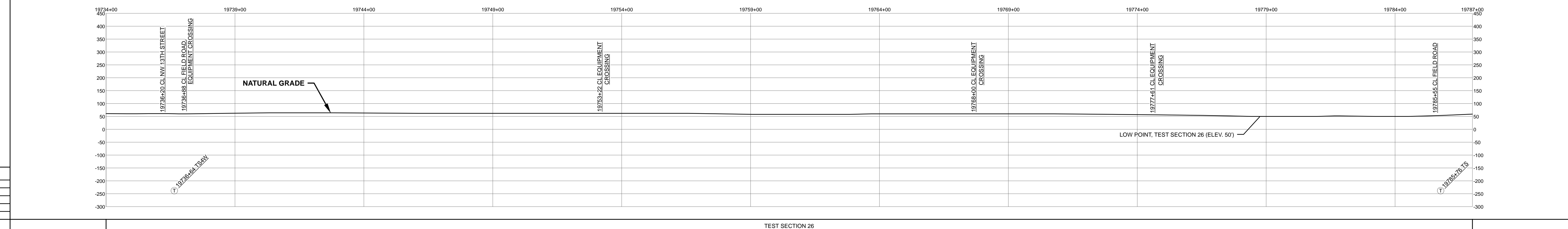
TRENCH PLUG

CP TEST STATION

RECTIFIER

DECOUPLER

SLOPE BREAKER & TRENCH PLUG SPACING		
CODE	% SLOPE	SPACING
A	< 5%	NO STRUCTURE
B	5 - 15%	300 FT
C	15 - 30%	200 FT
D	> 30%	100 FT



HYDROSTATIC TEST SECTION		REFERENCE DRAWINGS		REVISIONS				MATERIALS		ENGINEERING APPROVALS				SABAL TRAIL PROJECT PROPOSED 36" PIPELINE STA. 19734+00 TO STA. 19787+00 ALIGNMENT SHEET		MARION COUNTY, FLORIDA		
DWG. NO.	DESCRIPTION	REV	DRN	DATE	DESCRIPTION	ITEM NO.	DESCRIPTION	QTY	TITLE	SIGNATURE	DATE	SIGNATURE	DATE	YEAR	SHEET	SCALE	DWG.	REV.
		0		06/29/2015	ISSUED FOR BID	1	36" O.D. x 0.520" W.T., API 5L X70, FBE 16 MILS w/I.D. EPOXY 1.7 MILS	5219 LF						2017	377 OF 492	1" = 200'	1657-PL-DG-70197-377	1
		1		03/14/2016	ISSUED FOR CONSTRUCTION	4	36" O.D. x 0.750" W.T., API 5L X70, FBE 16 MILS, ARO 24 MILS, w/I.D. EPOXY 1.7 MILS	81 LF										