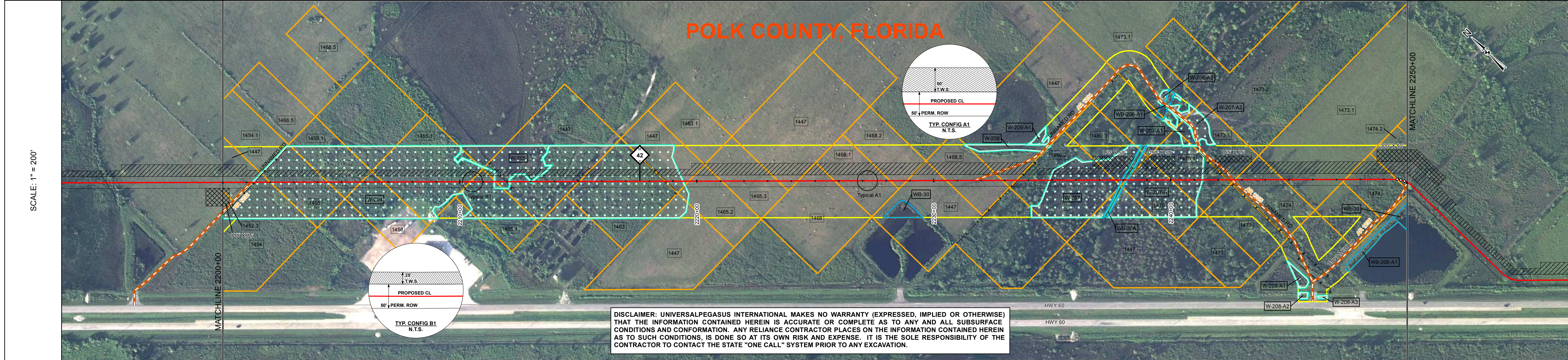


TRACT	1447 LIGHTSEY RANCHES, LTD. 124 FT 2200+00 TO 2201+24	1454 JAYSHIV BHUMI, LLC 76 FT 2201+24 TO 2202+00	1455 JAYSHIV BHUMI, LLC 242 FT 2202+00 TO 2204+42	1455.1 JAYSHIV BHUMI, LLC 142 FT 2204+42 TO 2205+84	1458 ANEVEL ESTEVES AND MARY ESTEVES 92 FT 2205+84 TO 2206+76	1455.1 JAYSHIV BHUMI, LLC 368 FT 2206+76 TO 2210+44	1455.1 JAYSHIV BHUMI, LLC 108 FT 2210+44 TO 2211+52	1447 LIGHTSEY RANCHES, LTD. 353 FT 2211+52 TO 2215+05	1463 LARRY THOMAS AND COLLEEN THOMAS 362 FT 2215+05 TO 2218+67	1447 LIGHTSEY RANCHES, LTD. 98 FT 2218+67 TO 2219+66	1465.2 LOIS R. FETT AND BRADLEY FETT 238 FT 2219+66 TO 2221+04	1465.3 LOIS R. FETT AND BRADLEY FETT 238 FT 2221+04 TO 2223+42	1447 LIGHTSEY RANCHES, LTD. 86 FT 2223+42 TO 2224+28	1468 ARTHUR D. & MARGIE L. KLEMPER 153 FT 2224+28 TO 2225+81	1468.1 LIGHTSEY RANCHES, LTD., ET AL. 234 FT 2225+81 TO 2228+15	1468.2 CAROL ANN WHELAN & JEAN M. MCAFEE 72 FT 2228+15 TO 2228+87	1447 LIGHTSEY RANCHES, LTD. 160 FT 2228+87 TO 2230+53	1468.5 LIGHTSEY RANCHES, LTD., ET AL. 237 FT 2230+53 TO 2232+90	1447 LIGHTSEY RANCHES, LTD. 58 FT 2232+90 TO 2233+48	1469.2 ROBERT OLIVER AND EASTER JONES 416 FT 2233+48 TO 2237+64	1469.3 ROBERT OLIVER AND EASTER JONES 46 FT 2237+64 TO 2238+12	1470 ROBERT OLIVER AND EASTER JONES 189 FT 2238+12 TO 2240+01	1470.1 ROBERT OLIVER AND EASTER JONES 240 FT 2240+01 TO 2242+41	1473.1 LIGHTSEY RANCHES, LTD. 30 FT 2242+41 TO 2242+71	1474 JIM STONE 205 FT 2242+71 TO 2244+76	1473.1 LIGHTSEY RANCHES, LTD. 259 FT 2244+76 TO 2247+35	1474 JIM STONE 219 FT 2247+35 TO 2249+54	1474.2 CHAD ANTHONY DIGGA AND JARED BROOKS 46 FT 2249+54 TO 2250+00
-------	---	--	---	---	---	---	---	---	--	--	--	--	--	--	---	---	---	---	--	---	--	---	---	--	--	---	--	---



DISCLAIMER: UNIVERSALPEGASUS INTERNATIONAL MAKES NO WARRANTY (EXPRESSED, IMPLIED OR OTHERWISE) THAT THE INFORMATION CONTAINED HEREIN IS ACCURATE OR COMPLETE AS TO ANY AND ALL SUBSURFACE CONDITIONS AND CONFORMATION. ANY RELIANCE CONTRACTOR PLACES ON THE INFORMATION CONTAINED HEREIN AS TO SUCH CONDITIONS, IS DONE SO AT ITS OWN RISK AND EXPENSE. IT IS THE SOLE RESPONSIBILITY OF THE CONTRACTOR TO CONTACT THE STATE "ONE CALL" SYSTEM PRIOR TO ANY EXCAVATION.

SURVEY DATA	STATIONING	MATERIAL
MATCHLINE 2200+00	2200+00	MATCHLINE 2200+00
2201+18 CLAR 1234 UNNAMED RD 2201+33 FENCE	2200+09 2201+33	54-9K# SBW 10.5 CC 632
2206+31 IRON ROD LT 47	2206+26 2206+32 2206+35	40-9K# SBW 13.5 CC 540
2211+93 FENCE	2211+64 2211+72 2211+80 2211+94	79-9K# SBW 10.5 CC
2214+28 TOE OF SLOPE 2214+51 TOE OF BANK 2214+89 TOE OF SLOPE 2214+92 FENCE	2219+95	3828'
2218+70 FENCE	2223+43	
2231+74 CLAR 1234 UNNAMED RD	2231+46	
2233+56 FENCE	2233+56	
2237+48 TOE OF BANK 2237+85 TOE OF SLOPE 2238+49 CLAR 1234 UNNAMED RD 2238+57 TOE OF SLOPE 2238+57 TOE OF BANK	2234+38 2241+84 2242+40 2242+60	72-9K# SBW 10.5 CC
2242+60 FENCE 2242+60 CLAR 1235 UNNAMED RD	2249+72	
MATCHLINE 2250+00	MATCHLINE 2250+00	MATCHLINE 2250+00

ENVIRONMENTAL DATA	STATIONS
MINIMUM DEPTH OF COVER	3' 4'
AC MITIGATION	THIS BAND NOT UTILIZED
WATERBODY/WETLAND CROSSINGS	W-204 W-205 W-204 W-205 W-204
WATERBODY/WETLAND LENGTH	1020' 63' 90' 7' 635'
PERMANENT EROSION CONTROL	2201+09 2201+26 2201+29
THREATENED AND ENDANGERED SPECIES	2211+46 2212+06 2212+09 2212+49 2212+89 2213+06 2213+06
TIMING CONSTRAINT	2219+41
CONSTRAINT 2	2234+89
CONSTRAINT 3	2237+75 2237+82 2237+82 2238+18 2238+18 2238+47
CONSTRAINT 4	2241+53 2242+50 2242+70
	2249+80

BILL OF MATERIALS			
ITEM NO.	QTY	UOM	DESCRIPTION
1	4460	FT	36" O.D. x 0.521" W.T., API 5L, X70, PSL2, DSAW, 14-16 MILS FBE
6	540	FT	36" O.D. x 0.750" W.T., API 5L, X70, PSL2, DSAW, 14-16 MILS FBE

MISCELLANEOUS MATERIALS			
QTY	UOM	REQN NUMBER	DESCRIPTION
245	EA		SET ON WEIGHTS
3	EA		PIPELINE MARKERS
4	EA		WARNING SIGNS
1	EA		CP TEST STATION TYPE 1
0	EA		CP TEST STATION TYPE 2
0	EA		AERIAL MARKERS

TYPICAL DRAWINGS	
DWG/FIELD BOOK NO.	TITLE
21040-510-TYP-20001	CATHODIC PROTECTION STD. SINGLE POINT TEST SECTION, TYPE 1
21040-510-TYP-20002	CATHODIC PROTECTION STD. FOREIGN PIPELINE CROSSING TEST STATION, TYPE 2
21040-510-TYP-20112	CONTINUOUS CONCRETE COATING STANDARD FOR 36" / 30" PIPELINE
21040-510-TYP-20113	TYPICAL SADDLE BAG WEIGHTS
21040-510-TYP-20114	WARNING SIGN DETAIL
21040-510-TYP-20116	AERIAL MARKER INSTALLATION DETAIL
21040-510-TYP-20117	TYPICAL PIPELINE MARKER ASSEMBLY
21040-510-TYP-20118	PIPELINE MARKER "WARNING" DECAL

GENERAL INFORMATION

- THE MINIMUM DEPTH OF COVER FOR THE PROJECT IS 36 INCHES. ADDITIONAL DEPTH OF COVER IS REQUIRED FOR ROAD AND WATERBODY CROSSINGS, AND IS TO BE IN ACCORDANCE WITH REFERENCED PERMIT DRAWINGS, SITE SPECIFIC DRAWINGS, OR CONSTRUCTION SPECIFICATIONS, WHICHEVER IS MORE STRINGENT.
- THE BOUNDARIES OF ALL WORK AREAS WILL BE CLEARLY MARKED AND ALL WORK SHALL REMAIN WITHIN THE DESIGNATED WORK AREA.
- THE REQUIRED STATE ONE CALL NOTIFICATION IS THE RESPONSIBILITY OF THE CONSTRUCTION CONTRACTOR.
- THE CONTRACTOR SHALL ACCESS THE WORK AREA USING ONLY PUBLIC ROADS AND APPROVED ACCESS ROADS.
- ADDITIONAL WARNING SIGNS MAY BE REQUIRED AS DICTATED BY CONSTRUCTION CONTRACT.
- MAP PROJECTION: NAD 1983 HARN STATE PLANE FLORIDA EAST FIPS 0901 FEET. VERTICAL DATUM: NAVD 88.

SPECIAL NOTES

- INDUCTION BEND QUANTITIES ALONG WITH THEIR DESCRIPTIONS ARE LOCATED ON DRAWING 21040-506-MTL-00001.

LEGEND	
HDD PIPE	PIPELINE ROUTE
BORE PIPE	FENCE
LINE PIPE	POWER LINE
3R RAD PIT	TELEPHONE LINE
INDUCTION BEND	WATERLINE
TRANSITION PIPE	SEWER LINE
CONT. CONC. COAT.	BURIED CABLE
	UTILITY LINE
WARNING SIGN	COUNTY SURVEY
MATERIAL ITEM	FOREIGN PIPELINE
AERIAL MARKER	HIGHWAY / ROAD
CP TEST STATION	PRIVATE ACCESS / SHOOPY ROAD
BY MOV / BV & CV	PIPELINE MARKER
PIPELINE MARKER	PIPELINE MILEPOST
ANODE BED	

REVISIONS			
NO.	DESCRIPTION	DATE	REV BY
G	ISSUED FOR 90% REVIEW	2015-08-14	MB MJ RG
F	ISSUED FOR FINAL REVIEW	2014-09-05	MB RG LD
E	ISSUED FOR FERC FILING	2014-08-15	MB RG LD
D	ISSUED FOR 60% REVIEW	2014-06-16	MB RG LD

APPROVALS

DRAWN BY:	MB	CONSTRUCTION PERMIT NO.	
CHECKED BY:	MJ	MAINTENANCE OPERATION REGION	
PROJECT MANAGER:	RG	MIN. TEST PRESSURE	1816 PSI
PROJECT DEF. NO.		DESIGN PRESSURE	1440 PSI

UniversalPegasus INTERNATIONAL
A Subsidiary of Huntington Ingalls Industries

FLORIDA SOUTHEAST CONNECTION

FLORIDA SOUTHEAST CONNECTION PROJECT

STA: 2200+00 TO 2250+00 DISCIPLINE: 03

FLORIDA SOUTHEAST CONNECTION ALIGNMENT SHEET
POLK COUNTY, FLORIDA

SCALE: 1" = 200'

21040-510-ALS-00049 REV. G