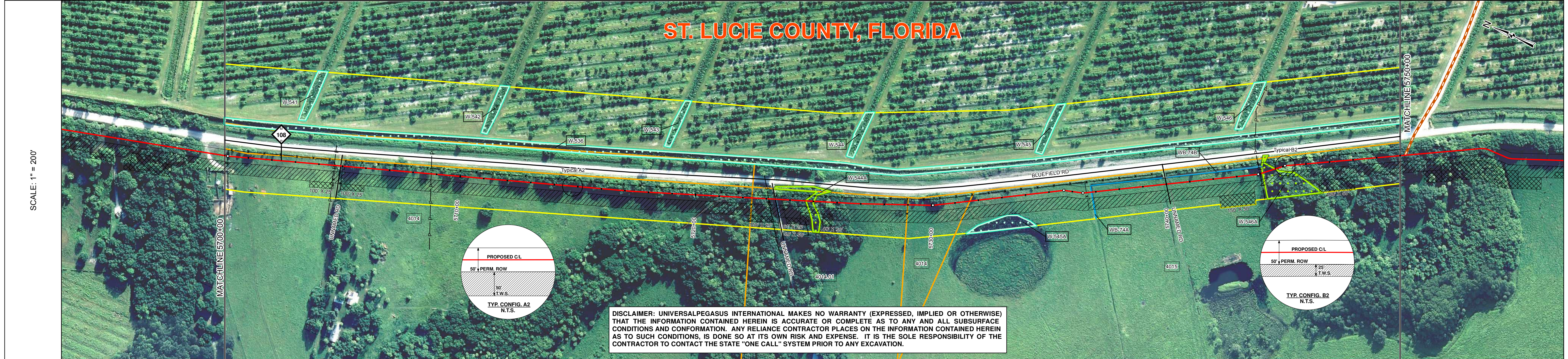
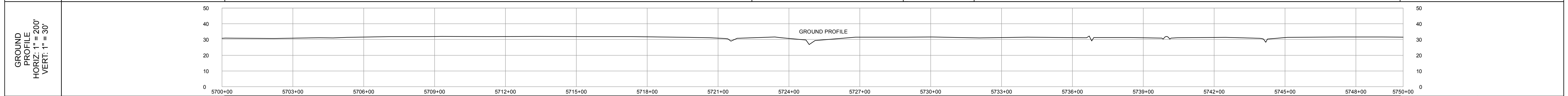


TRACT	4014 D & B, INC 2239 FT 5700+00 TO 5722+39	4014.01 SANDRA F. SILASAVAGE 660 FT 5722+39 TO 5728+99	4014 D & B, INC. 264 FT 5728+99 TO 5731+63	4015 SYLVIA RODRIGUEZ, DANIEL A. RODRIGUEZ, DIEGO R. RODRIGUEZ, SYLVIA M. RODRIGUEZ, AND ROSSANA I. RODRIGUEZ 1837 FT 5731+63 TO 5750+00
-------	---	---	---	---



**DISCLAIMER: UNIVERSALPEGASUS INTERNATIONAL MAKES NO WARRANTY (EXPRESSED, IMPLIED OR OTHERWISE) THAT THE INFORMATION CONTAINED HEREIN IS ACCURATE OR COMPLETE AS TO ANY AND ALL SUBSURFACE CONDITIONS AND CONFORMATION. ANY RELIANCE CONTRACTOR PLACES ON THE INFORMATION CONTAINED HEREIN AS TO SUCH CONDITIONS, IS DONE SO AT ITS OWN RISK AND EXPENSE. IT IS THE SOLE RESPONSIBILITY OF THE CONTRACTOR TO CONTACT THE STATE "ONE CALL" SYSTEM PRIOR TO ANY EXCAVATION.**

SURVEY DATA	STATIONING
MATCHLINE 5700+00	5700+13 FENCE CORNER 5700+13 FENCE CORNER 5700+13 FENCE CORNER 5704+66 FENCE CORNER 5704+66 POWER LINE 5704+70 FENCE CORNER 5704+70 FENCE CORNER 5704+71 FENCE CORNER 5704+82 UNNAMED RD 5704+82 FENCE CORNER 5705+09 FENCE CORNER 5705+09 FENCE CORNER 5705+11 FENCE CORNER 5708+77 POWER LINE
MATCHLINE 5750+00	5721+28 TOP OF BANK 5721+54 CL DITCH 5722+39 FENCE CORNER 5723+05 FENCE CORNER 5723+08 FENCE CORNER 5723+28 UNNAMED RD 5723+42 FENCE CORNER 5723+42 FENCE CORNER 5723+46 FENCE CORNER 5724+68 TOP OF BANK 5724+72 TOP OF SLOPE 5724+86 TOP OF BANK 5725+11 TOP OF BANK 5728+99 FENCE CORNER 5730+05 PI. 7x48x12 LT 5735+64 PI. 14x12 RT 5736+45 PI. 13x15x12 LT 5738+71 TOP OF BANK 5738+82 TOP OF SLOPE 5738+82 TOP OF BANK 5740+08 TOP OF BANK 5740+12 CL DITCH 5740+18 TOP OF BANK 5743+62 PI. 14x18x12 LT 5744+00 POWER LINE 5744+19 CL DITCH 5745+10 PI. 12x36x12 RT 5745+11 TOP OF BANK

ENGINEERING DATA	MATERIAL
MATCHLINE 5700+00	5704+70 5704+70 5715+11 5723+08 5724+16 5725+63 5728+99 5730+06 5736+45 5738+85 5738+85 5739+90 5743+68 5743+68 5745+11 5745+11
MATCHLINE 5750+00	5743+68 5743+68 5745+11 5745+11

ENVIRONMENTAL DATA	STATIONS
WATERBODY/WETLAND CROSSINGS	5704+82 5705+02
WATERBODY/WETLAND LENGTH	5721+18 5721+91 5723+28 5723+48 5724+68 5725+01 5736+45 5738+80 5738+82 5739+10 5739+68 5739+90 5740+28 5743+68 5744+11 5744+38 5744+66

ENVIRONMENTAL DATA	STATIONS
PERMANENT EROSION CONTROL	
SLOPE BREAKER CODE	
TOPSOIL SAVAGE	
THREATENED AND ENDANGERED SPECIES	
TIMING CONSTRAINT	
CONSTRAINT 2	
CONSTRAINT 3	
CONSTRAINT 4	

BILL OF MATERIALS				MISCELLANEOUS MATERIALS				TYPICAL DRAWINGS				GENERAL INFORMATION				LEGEND				REVISIONS				APPROVALS			
ITEM NO.	QTY	UOM	REQ#	MATERIAL NUMBER	DESCRIPTION	QTY	UOM	REQ#	MATERIAL NUMBER	DESCRIPTION	DWG/FIELD BOOK NO.	TITLE	1.	MINIMUM DEPTH OF COVER FOR THE PROJECT IS 36 INCHES. ADDITIONAL DEPTH OF COVER IS REQUIRED FOR ROAD AND WATERBODY CROSSINGS, AND IS TO BE IN ACCORDANCE WITH REFERENCED PERMIT DRAWINGS, SITE SPECIFIC DRAWINGS, OR CONSTRUCTION SPECIFICATIONS, WHICHEVER IS MORE STRINGENT.	1.	INDUCTION BEND QUANTITIES ALONG WITH THEIR DESCRIPTIONS ARE LOCATED ON DRAWING 21040-510-FBW-0001.	1.	PERMANENT ROW	NO.	DESCRIPTION	DATE	REV BY	CHK BY	APP BY	DRAWN BY:	MB	CONSTRUCTION PERMIT NO.
Z	5000	FT			30" O.D. x 0.429" W.T., API 5L X70, PSL2, DSAW, 14-16 MILS FBE	34	EA			SET ON WEIGHTS	21040-510-TYP-20001	CATHODIC PROTECTION STD. SINGLE POINT TEST STATION, TYPE 1	2.	THE BOUNDARIES OF ALL WORK AREAS WILL BE CLEARLY MARKED AND ALL WORK SHALL REMAIN WITHIN THE DESIGNATED WORK AREA.	2.	MAP PROJECTION: NAD 1983 HARN STATE PLANE FLORIDA EAST FIPS 0901 FEET. VERTICAL DATUM: NAVD 88.	2.	TEMPORARY WORKSPACE	1	IFC (UPDATE ENV., RE-ROUTES, FOOT-PRINT)	2016-04-08	MB	MJ	RG	CHECKED BY:	MJ	MAINTENANCE OPERATION REGION
					WARNING SIGN	4	EA			PIPELINE MARKERS	21040-510-TYP-20002	CATHODIC PROTECTION STD. FOREIGN PIPELINE CROSSING TEST STATION, TYPE 2	3.	THE REQUIRED STATE ONE CALL NOTIFICATION IS THE RESPONSIBILITY OF THE CONSTRUCTION CONTRACTOR.	3.		3.	NON FORESTED WETLAND	0	ISSUED FOR CONSTRUCTION	2015-12-15	MB	MJ	RG	PROJECT MANAGER	RG	MIN. TEST PRESSURE 1816 PSI
					CP TEST STATION TYPE 1	2	EA			CP TEST STATION TYPE 2	21040-510-TYP-20028	CP TEST STATION TYPE 2	4.	THE CONTRACTOR SHALL ACCESS THE WORK AREA USING ONLY PUBLIC ROADS AND APPROVED ACCESS ROADS.	4.		4.	FORESTED WETLAND									DESIGN PRESSURE 1440 PSI
					AERIAL MARKERS	0	EA			AERIAL MARKERS	21040-510-TYP-20029	AERIAL MARKERS	5.	ADDITIONAL WARNING SIGNS MAY BE REQUIRED AS DICTATED BY CONSTRUCTION CONTRACT.	5.		5.	WATERBODY									
					ANODE BED DEEP WELL	0	EA			ANODE BED DEEP WELL	21040-510-TYP-20112	CONTINUOUS CONCRETE COATING STANDARD FOR 36" / 30" PIPELINE	6.	THIS BAND NOT UTILIZED	6.		6.	PARCEL NUMBER									
FITTINGS SUMMARY				CONTINUOUS CONCRETE COATING				SPECIAL NOTES				ENVIRONMENTAL				COMPANY				FLORIDA SOUTHEAST CONNECTION PROJECT							
ITEM NO.	QTY	UOM	REQ#	MATERIAL NUMBER	DESCRIPTION	QTY	UOM	REQ#	MATERIAL NUMBER	DESCRIPTION	21040-510-TYP-20113	TYPICAL SADDLE BAG WEIGHTS	1.	INDUCTION BEND QUANTITIES ALONG WITH THEIR DESCRIPTIONS ARE LOCATED ON DRAWING 21040-510-TYP-20116	1.		1.	WETLAND / WATERBODY NAME									
					PIPE COATING DATA	21040-510-TYP-20114	WARNING SIGN DETAIL	21040-510-TYP-20115	AERIAL MARKER INSTALLATION DETAIL	21040-510-TYP-20116	AERIAL MARKER DETAIL	21040-510-TYP-20117	TYPICAL PIPELINE MARKER ASSEMBLY	2.	SEE ARK DRAWING PACKAGE FOR ANODE BED DEEP WELL.	2.		2.	ROCKERY BUFFER (1000 FEET)								
QTY	UOM				PIPE COATING: 14 MIL MINIMUM FBE AND 24 MIL MINIMUM ARO	21040-510-TYP-20118	PIPELINE MARKER "WARNING" DECAL	21040-510-TYP-20118	PIPELINE MARKER "WARNING" DECAL	21040-510-TYP-20118	PIPELINE MARKER "WARNING" DECAL							2.	TYPICAL DETAIL CONFIGURATION								
					GIRTH WELD COATING: 2 PART EPOXY													3.	POINT OF INTERSECTION (P)								
					INTERNAL COATING (YES/NO): NO													3.	VERTICAL FITTING								
																		3.	SPREAD BREAK								
																		3.	ENVIRONMENTAL SURVEY AREA								

**FLORIDA SOUTHEAST CONNECTION PROJECT**
  
 STA: 5700+00 TO 5750+00      DISCIPLINE: 03

**FLORIDA SOUTHEAST CONNECTION**
  
**ALIGNMENT SHEET**
  
**ST. LUCIE COUNTY, FLORIDA**

SCALE: 1" = 200'      21040-510-ALS-00120      REV. 1