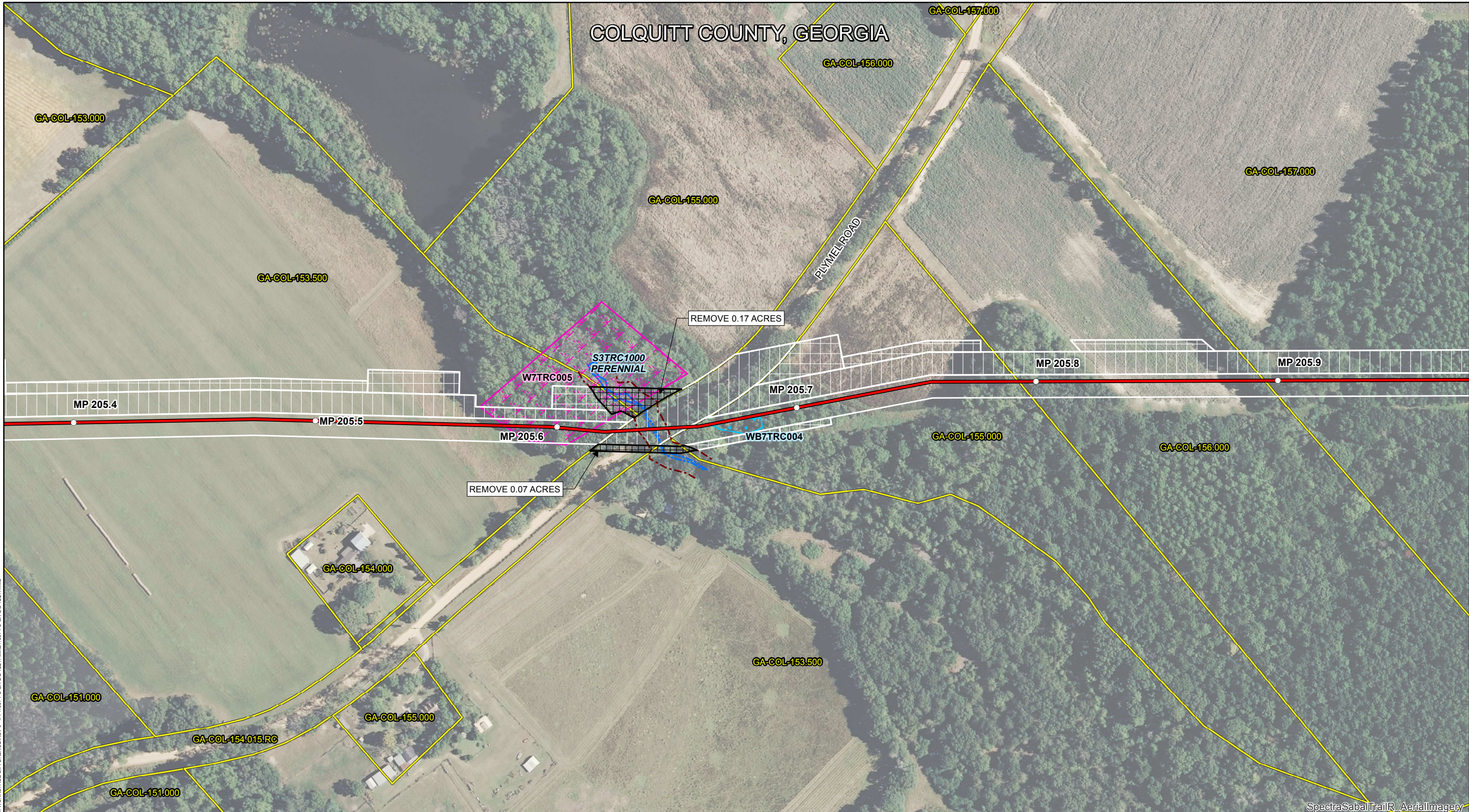


COLQUITT COUNTY, GEORGIA

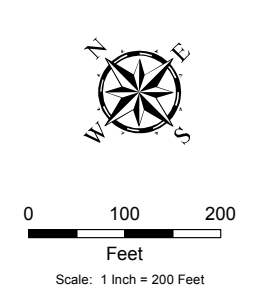


SpectraSabalTrailR AerialImagery


Date: 7/18/2016 Time: 9:03:58 AM User: hshy
 P:\GIS\1657-PL-GA-DG-72247\1657-PL-GA-DG-72247.MXD 1657-PL-GA-DG-72247.mxd

Legend	
	MILE POSTS
	PROPOSED 36" MAINLINE
	WORKSPACE REDUCTION
	STREAMS
	STREAM BANKS
	WATERBODY
	WETLANDS - PEM
	WETLANDS - PFO
	WETLANDS - PSS
	PARCELS
	25' ENVIRONMENTAL IMPACT BUFFER

	PERMANENT EASEMENT
	TEMPORARY WORKSPACE
	ADDITIONAL TEMPORARY WORKSPACE



NO.	REVISION - DESCRIPTION	BY	DATE	CHK'D	APP'D
0	ISSUED FOR PERMITTING	GIE	07/18/2016	FSR	BG



SABAL TRAIL PROJECT
PROPOSED 36" MAINLINE

COLQUITT COUNTY
WORKSPACE REDUCTION
COLQUITT COUNTY, GEORGIA

DWG NO: 1657-PL-GA-DG-72247	SHT: 1 of 1	REV: 0
-----------------------------	-------------	--------