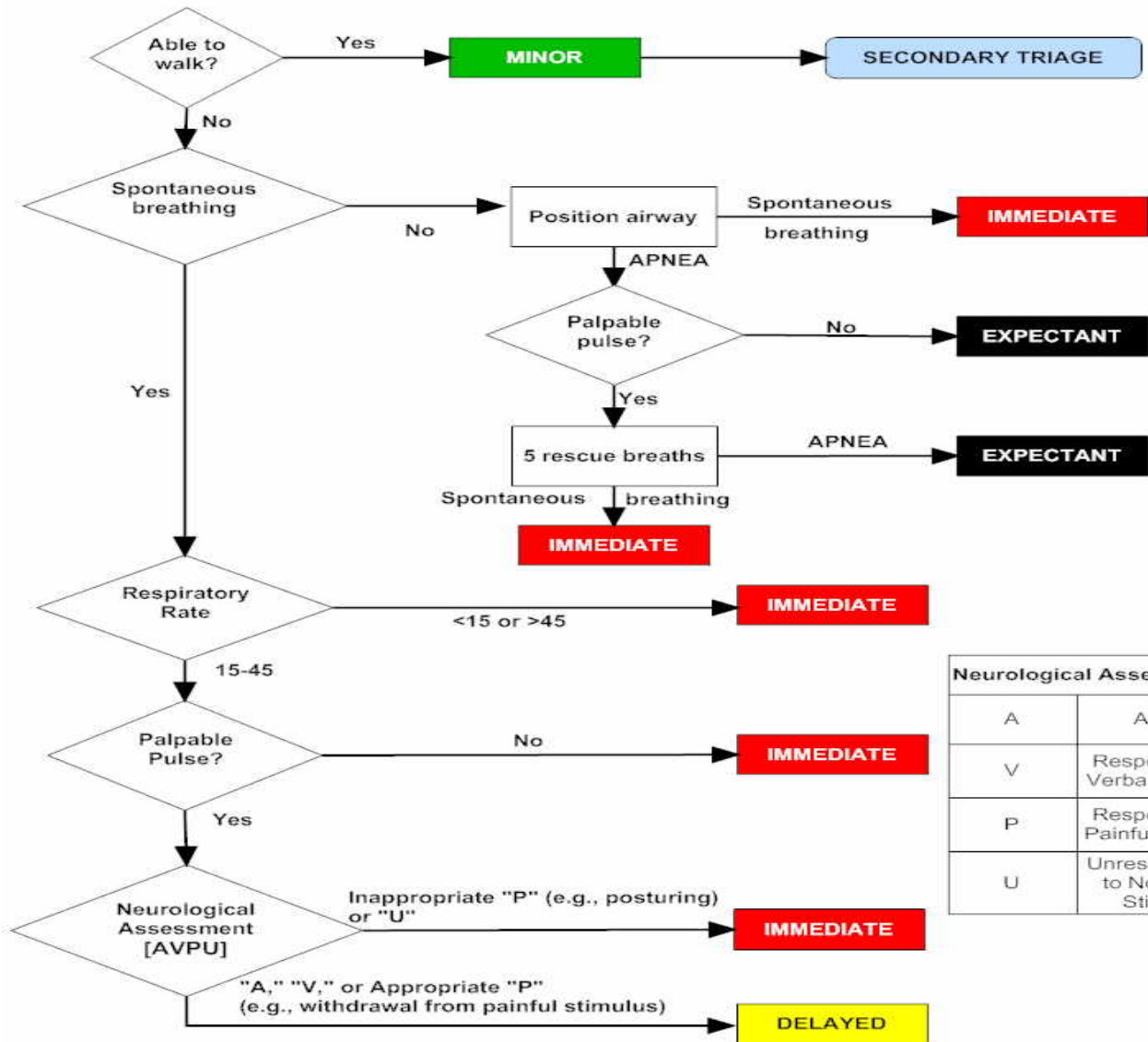


JumpSTART Pediatric Multiple Casualty Incident Triage



Use JumpSTART if the Patient appears to be a child.

Use an adult system, such as START, if the patient appears to be a young adult.

Triage Categories

EXPECTANT

Black Triage Tag Color

- Victim unlikely to survive given severity of injuries, level of available care, or both
- Palliative care and pain relief should be provided

DELAYED

Yellow Triage Tag Color

- Victim's transport can be delayed
- Includes serious and potentially life-threatening injuries, but status not expected to deteriorate significantly over several hours

IMMEDIATE

Red Triage Tag Color

- Victim can be helped by immediate intervention and transport
- Requires medical attention within minutes for survival (up to 60)
- Includes compromises to patient's Airway, Breathing, Circulation

MINOR

Green Triage Tag Color

- Victim with relatively minor injuries
- Status unlikely to deteriorate over days
- May be able to assist in own care: "Walking Wounded"