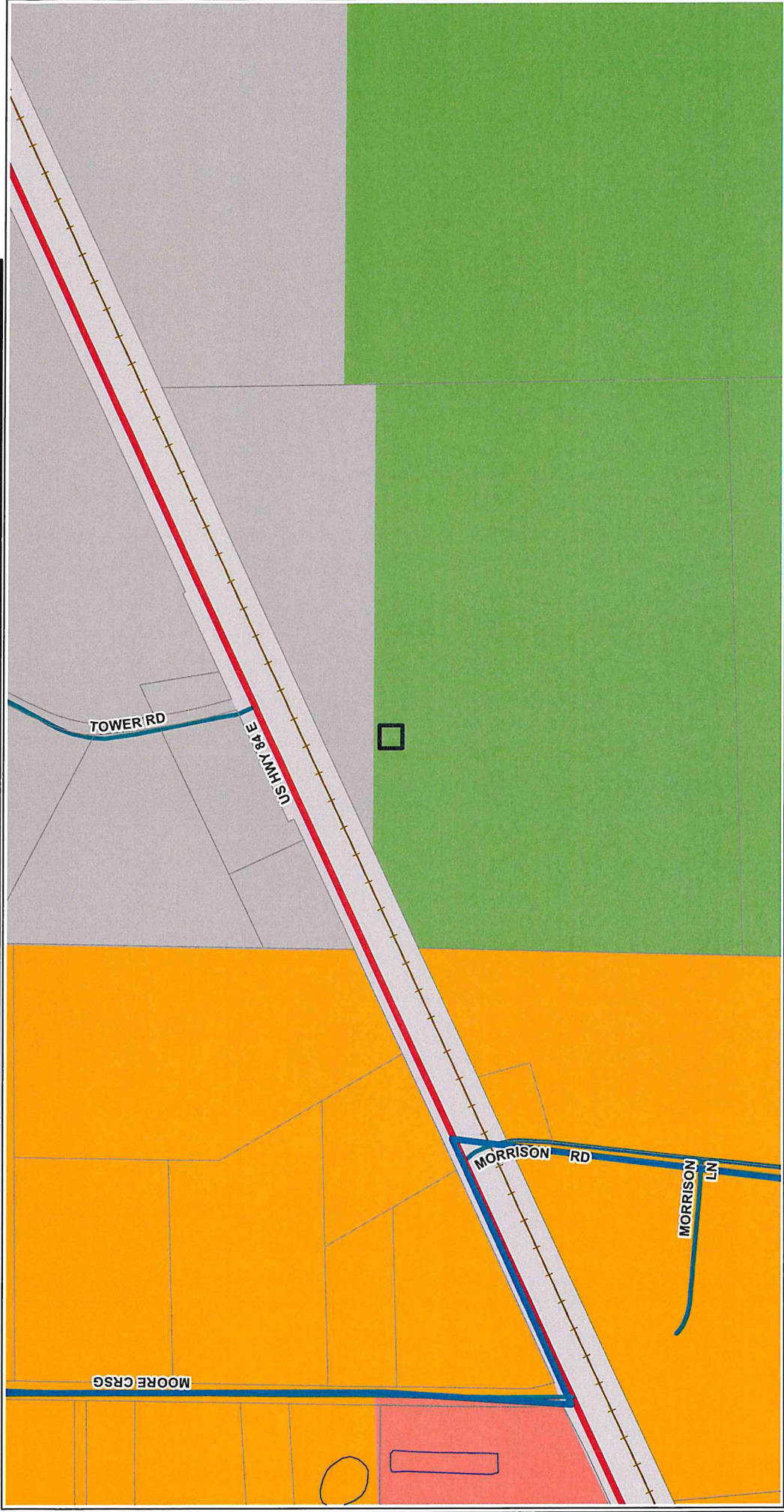


## Tower Request



**Character Areas**

- Neighborhood Activity Center
- Neighborhood Village
- Park/Recreation/Conservation
- Public / Institutional
- Regional Activity Center
- Rural Activity Center
- Rural Residential
- Suburban Area
- Transitional Neighborhood
- Transportation/Communication/Utilities

**Character Areas**

- Agriculture / Forestry
- Community Activity Center
- Downtown
- Established Residential
- Industrial Activity Center
- Industrial Area
- Institutional Activity Center
- Linear Greenspace/Trails
- Mill Town

**Roads**

**Functional Classification**

- 1, INTERSTATE
- 3, OTHER PRINCIPAL ARTERIAL
- 4, MINOR ARTERIAL
- 5, MAJOR COLLECTOR
- 6, MINOR COLLECTOR
- 7, LOCAL

**Urban Service Area**

- City Limits
- Parcels
- Railroads
- Open Water

0 1,000 2,000 Feet

**VALOR**  
VALOR is a leader in regional geographic information system.

Visit VALOR on the web at: [WWW.VALORGIS.COM](http://WWW.VALORGIS.COM)