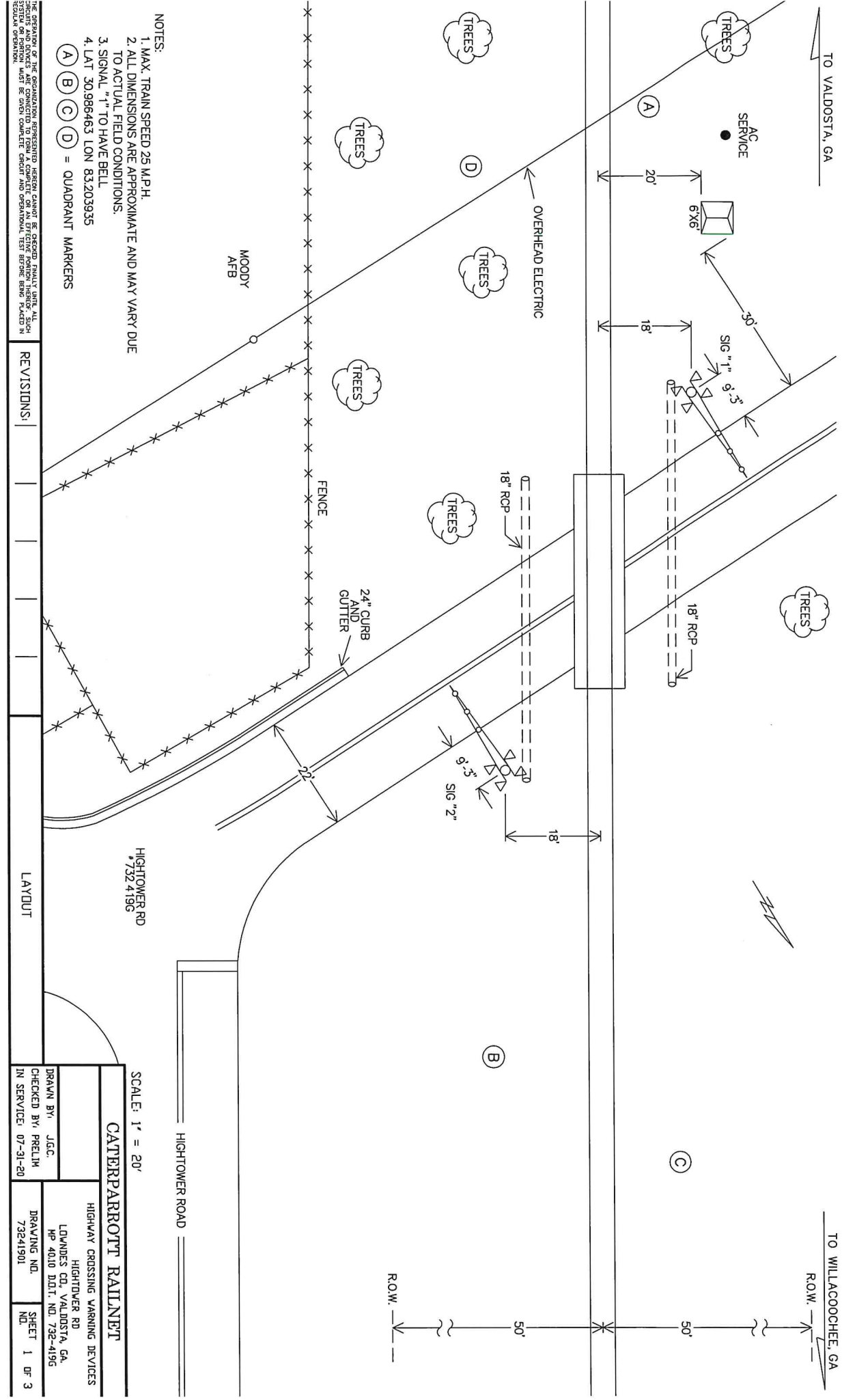


TO VALDOSTA, GA

TO WILLACOOCHEE, GA



- NOTES:
1. MAX. TRAIN SPEED 25 M.P.H.
 2. ALL DIMENSIONS ARE APPROXIMATE AND MAY VARY DUE TO ACTUAL FIELD CONDITIONS.
 3. SIGNAL "1" TO HAVE BELL
 4. LAT 30.986463 LON 83.203935

(A) (B) (C) (D) = QUADRANT MARKERS

THE OPERATION OF THE ORGANIZATION REPRESENTED HEREIN CANNOT BE CHECKED FINALLY UNTIL ALL PORTIONS OF THE SYSTEM ARE COMPLETELY INSTALLED AND OPERATIONAL TEST BEFORE BEING PLACED IN REGULAR OPERATION.

REVISIONS:

LAYOUT

HIGHTOWER RD #7324196

SCALE: 1" = 20'		CATERPARROTT RAILNET	
DRAWN BY:	J.G.C.	HIGHWAY CROSSING WARNING DEVICES	
CHECKED BY:	PRELIM	HIGHTOWER RD	
IN SERVICE:	07-31-20	LOWMEDES CD., VALDOSTA, GA.	
		HP 4010 D.D.T. NO. 732-4196	
		DRAWING NO. 73241901	SHEET 1 OF 3