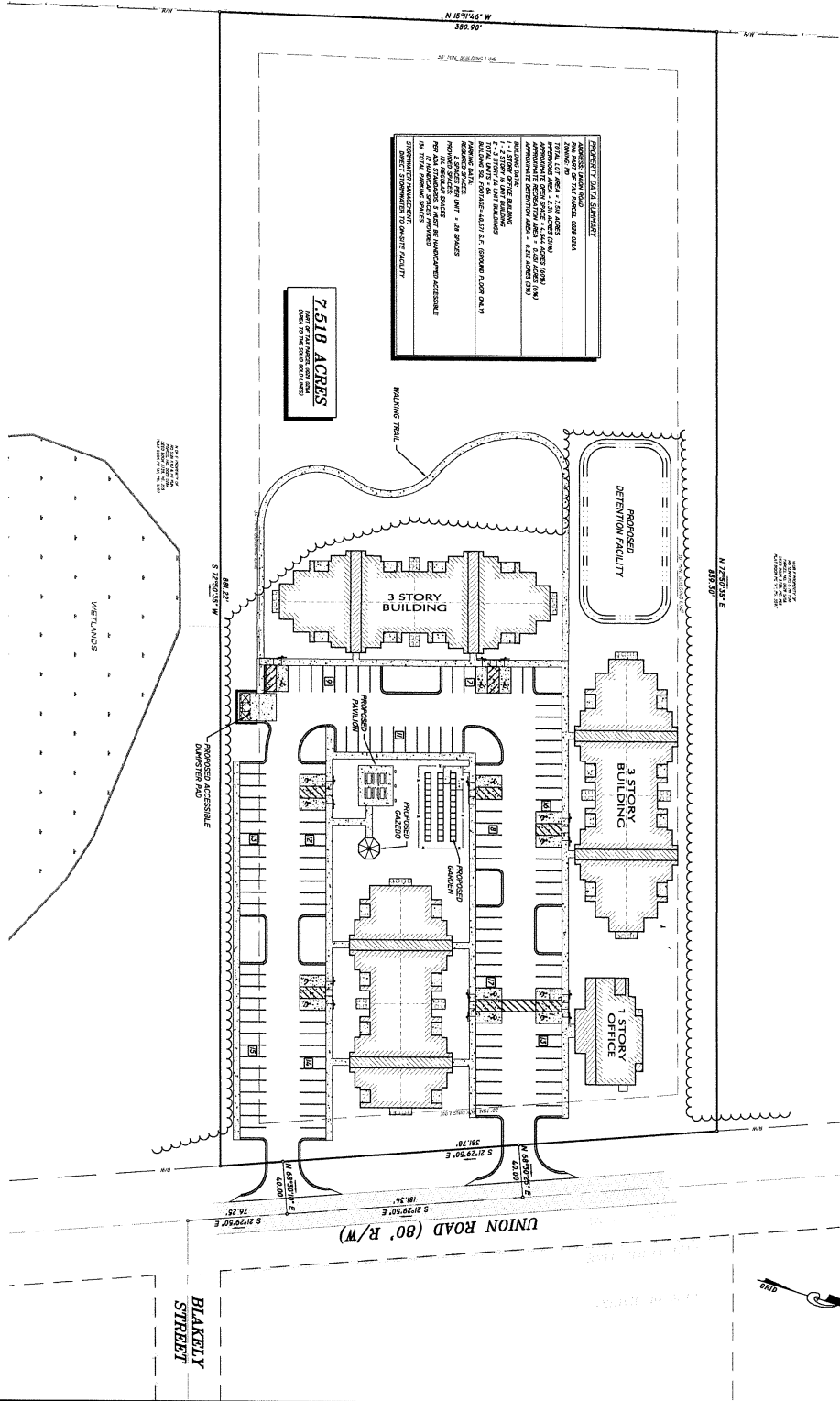


INTERSTATE 75 (R/W VARIES)



**PROPERTY DATA SUMMARY**

NO. ACRES OF THE PROJECT: 7.518 ACRES  
 TOTAL LOT AREA: 328,000 SQ. FT.  
 APPROXIMATE OPEN SPACE: 1.518 ACRES (468,000 SQ. FT.)  
 APPROXIMATE PAVED AREA: 0.518 ACRES (180,000 SQ. FT.)  
 APPROXIMATE DETENTION AREA: 0.518 ACRES (180,000 SQ. FT.)

**PLANNING DATA**

1 - 3 STORY 2 UNIT BUILDING  
 2 - 3 STORY 2 UNIT BUILDING  
 1 - 1 STORY OFFICE BUILDING  
 TOTAL BLDG. AREA: 468,000 SQ. FT. (13.4 ACRES)  
 TOTAL BLDG. AREA: 180,000 SQ. FT. (4.1 ACRES)  
 TOTAL BLDG. AREA: 180,000 SQ. FT. (4.1 ACRES)  
 TOTAL BLDG. AREA: 180,000 SQ. FT. (4.1 ACRES)

**PLANNING DATA**

1 - 3 STORY 2 UNIT BUILDING  
 2 - 3 STORY 2 UNIT BUILDING  
 1 - 1 STORY OFFICE BUILDING  
 TOTAL BLDG. AREA: 468,000 SQ. FT. (13.4 ACRES)  
 TOTAL BLDG. AREA: 180,000 SQ. FT. (4.1 ACRES)  
 TOTAL BLDG. AREA: 180,000 SQ. FT. (4.1 ACRES)  
 TOTAL BLDG. AREA: 180,000 SQ. FT. (4.1 ACRES)

**PLANNING DATA**

1 - 3 STORY 2 UNIT BUILDING  
 2 - 3 STORY 2 UNIT BUILDING  
 1 - 1 STORY OFFICE BUILDING  
 TOTAL BLDG. AREA: 468,000 SQ. FT. (13.4 ACRES)  
 TOTAL BLDG. AREA: 180,000 SQ. FT. (4.1 ACRES)  
 TOTAL BLDG. AREA: 180,000 SQ. FT. (4.1 ACRES)  
 TOTAL BLDG. AREA: 180,000 SQ. FT. (4.1 ACRES)

7.518 ACRES  
 AREA OF THE PROJECT AND THE  
 LAND TO BE DEVELOPED

GRAPHIC SCALE: 1 INCH = 40 FT.

WORK ORDER: 3844  
 SHEET: 1 OF 1

**ASA ENGINEERING & SURVEYING, LLC**  
 1004 S. PATTERSON ST. - VALDOSTA, GA 39181  
 PH: (229) 242-0954 - WWW.ASA-ENR.COM

CONCEPTUAL LAYOUT FOR:  
**UNION STATION**  
 L.L. 96 & 97 OF THE 12TH L.D.  
 LOWNDES COUNTY, GEORGIA

DRAWN	DATE	REVISIONS	
		BY	DESCRIPTION
CHECKED	09/01/2011		
PROJECT	3844		
CRD FILE	CRD-FILE		
DATE	09/01/2011		

© COPYRIGHT 2011  
 THIS DRAWING IS THE PROPERTY OF ASA ENGINEERING & SURVEYING, LLC AND MAY NOT BE REPRODUCED  
 WITHOUT WRITTEN PERMISSION. OCCURRENCE OF PUBLIC RECORDS MAY BE CORRECTED BUT NOT ALTERED.  
 12/28/10 10:00 AM 09/01/2011 09:01:01 0.01% 01