

RESOLUTION OF THE BOARD OF COMMISSIONERS OF LOWNDES COUNTY, GEORGIA, APPROVING A REDISTRICTING PLAN FOR THE LOWNDES COUNTY BOARD OF COMMISSIONERS, REQUESTING THAT ITS LOCAL LEGISLATIVE DELEGATION HAVE SUCH REDISTRICTING PLAN INTRODUCED AS LOCAL LEGISLATION AT THE 2022 REGULAR SESSION OF THE GEORGIA GENERAL ASSEMBLY, AND FOR OTHER PURPOSES

WHEREAS, the 2020 Decennial Census has been completed; and

WHEREAS, such 2020 Census reflects changes in the population of Lowndes County; and

WHEREAS, the County Commission Districts for elected members of the Lowndes County Board of Commissioners must be redrawn in order to comply with applicable federal and state guidelines; and

WHEREAS, the Board of Commissioners requested and obtained assistance preparing such redistricting plan from the Legislative and Congressional Reapportionment Office of the Georgia General Assembly; and

WHEREAS, the Board of Commissioners desires to submit a proposed redistricting plan to its local legislative delegation to the Georgia General Assembly so that such redistricting plan can be approved by the General Assembly at its 2022 regular session and then signed by the Governor; and

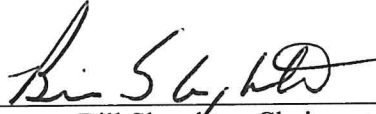
WHEREAS, the Board of Commissioners has determined the most appropriate redistricting plan for the Board of Commissioners and citizens of Lowndes County;

NOW THEREFORE, BE IT RESOLVED by the Board of Commissioners, acting in its capacity as the governing authority of Lowndes County, as follows:

- (1) The Board of Commissioners approves the redistricting plan attached as Exhibit A.
- (2) The Board of Commissioners requests that its local legislative delegation to the Georgia General Assembly draft and introduce during the 2022 regular session of the Georgia General Assembly such redistricting plan.
- (3) This Resolution shall take effect immediately upon its adoption.

SO ADOPTED, this 25th day of January, 2022.

LOWNDES COUNTY BOARD OF COMMISSIONERS

By: 
Bill Slaughter, Chairman

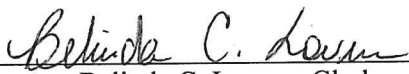
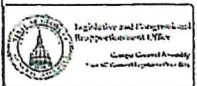
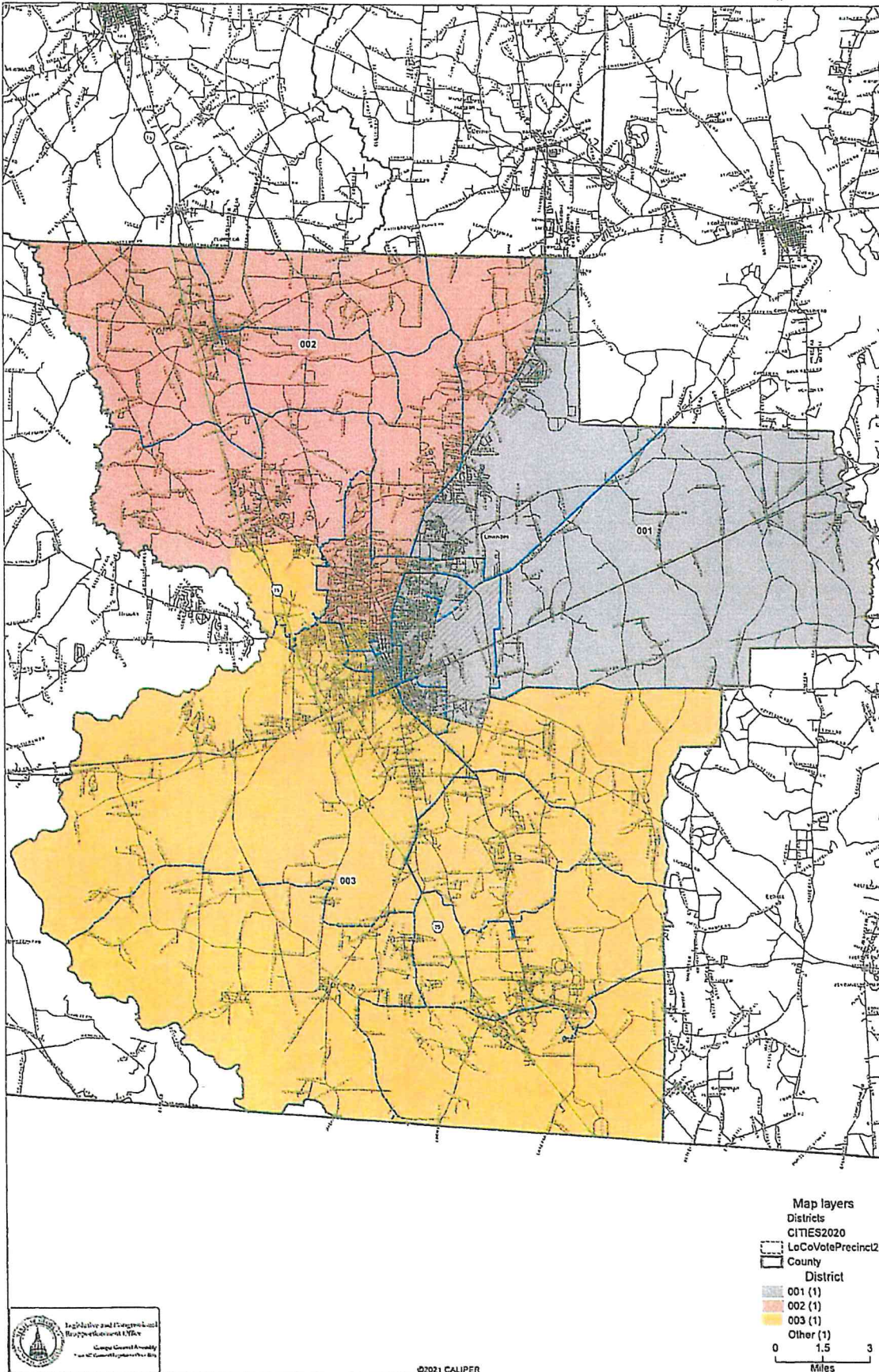
Attest: 
Belinda C. Lovern, Clerk

Exhibit A

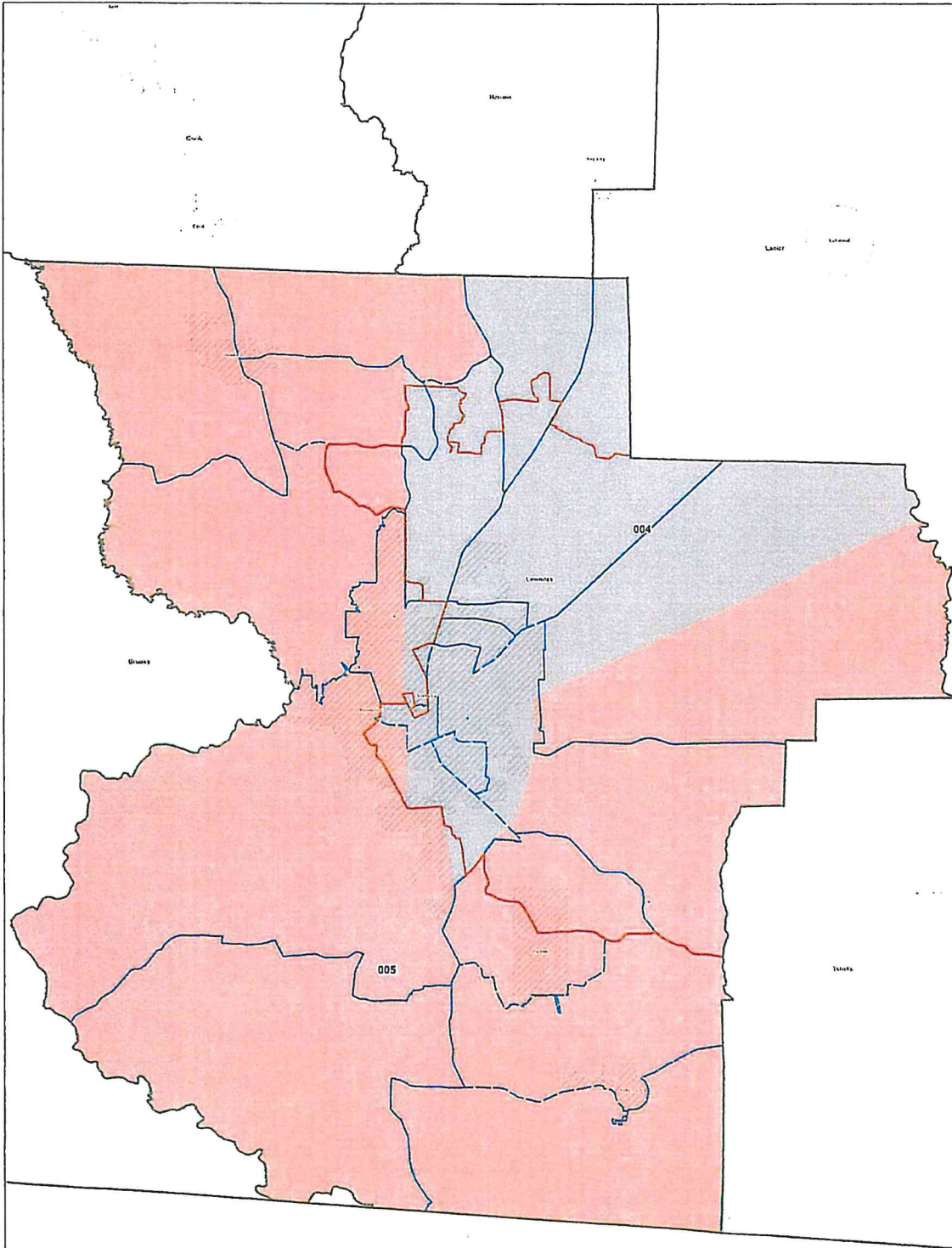
Draft - Lowndes County Commission Districts

Client: Lowndes
Plan: lowndesco-draft/13-2022
Type: Local CC



Draft - Lowndes County Commission Super Districts

Client: Lowndes
Plan: lowndescsup-draft2-2022
Type: Local CC



Map layers

- Districts
 - CITIES2020
 - LoCoVotePrecinct22
 - lowndescsupprop1-Tiger2010
 - County
- District
- 004 (1)
 - 005 (1)
 - Other (1)
- 0 2 4
Miles

