

**EROSION SYMBOL LEGEND**

<b>Sd1-NS</b>	SILT FENCING-NON-SENSITIVE	<b>Ds3</b>	DISTURBED AREA STABILIZATION (WITH PERMANENT SEEDING)
<b>Sd1-S</b>	SILT FENCING-SENSITIVE	<b>Du</b>	DUST CONTROL
<b>Sd2-F</b>	INLET SEDIMENT TRAP - FABRIC	<b>Co</b>	CONSTRUCTION EXIT
<b>Ds1</b>	DISTURBED AREA STABILIZATION (WITH MULCHING ONLY)	<b>St</b>	OUTLET PROTECTION
<b>Ds2</b>	DISTURBED AREA STABILIZATION (WITH TEMPORARY SEEDING)	<b>Cd-H</b>	CHECK DAM-HAY BALE

BEGIN BRIGGSTON ROAD  
STA: 10+00.00  
N: 264131.6478  
E: 2563152.9809

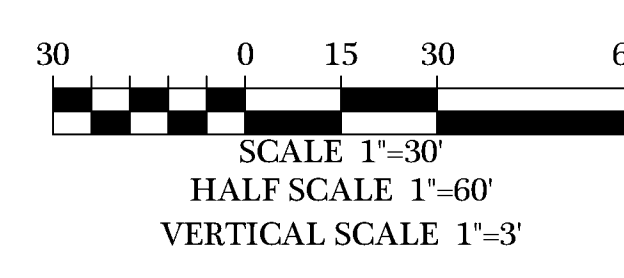
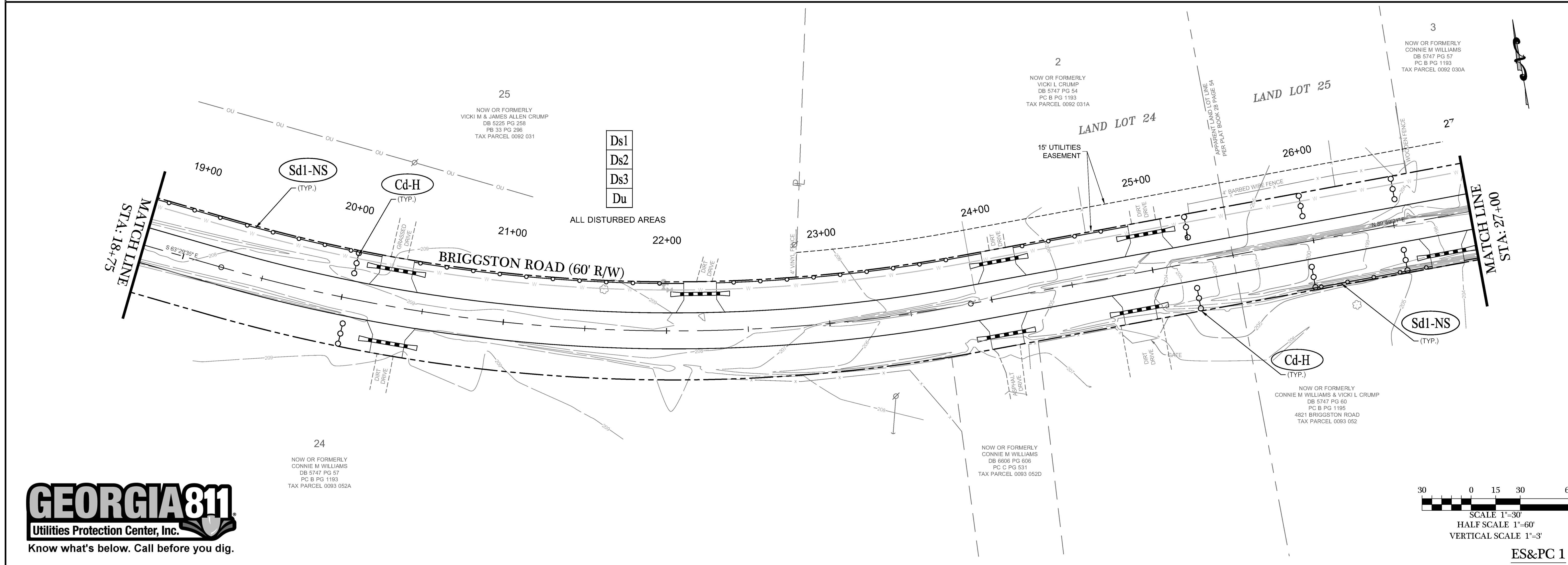
MATCH LINE  
STA: 18+75

**REVISIONS**

DATE	REVISIONS PER COUNTY COMMENTS
06/24/2022	REVISIONS PER COUNTY COMMENTS
06/24/2022	REVISIONS PER COUNTY COMMENTS
06/24/2022	REVISIONS PER COUNTY COMMENTS
06/24/2022	REVISIONS PER COUNTY COMMENTS
06/24/2022	REVISIONS PER COUNTY COMMENTS

© COPYRIGHT 2022  
THIS DRAWING IS THE PROPERTY OF INNOVATE ENGINEERING & SURVEYING, INC. NO PART OF THIS DRAWING OR ANY INFORMATION CONTAINED HEREIN IS TO BE REPRODUCED OR TRANSMITTED IN ANY FORM OR BY ANY MEANS, ELECTRONIC OR MECHANICAL, INCLUDING PHOTOCOPYING, RECORDING, OR BY ANY INFORMATION STORAGE AND RETRIEVAL SYSTEM, WITHOUT THE WRITTEN PERMISSION OF INNOVATE ENGINEERING & SURVEYING, INC.

**BRIGGSTON ROAD  
PAVING IMPROVEMENTS**  
LOWNDES COUNTY, GEORGIA  
L.L. 20, 21, 24, 25, & 26 OF THE 16TH L.D.  
& L.L. 70 & 71 OF THE 11TH L.D.



**INNOVATE!**  
Engineering & Surveying  
PHONE: 229-249-9113 - www.innovatees.com  
2214 N. Patterson Street, Valdosta, GA 31602

**GEORGIA**  
REGISTERED  
No. 22564  
PROFESSIONAL ENGINEER  
*William D. Kent*  
WILLIAM D. KENT

LEVEL II CERT. 8141

DATE: 09/14/2022  
DRAWN BY: M. WILSON  
CHECKED BY: B. KENT

SHEET  
**25 OF 47**

PROJECT NUMBER  
**1669**

I:\Projects\1669-LCE Briggston Road Paving Project\Civil\Briggston Road 100% Plans\166908-Rd.dwg - 7/14/2023 8:47 AM