

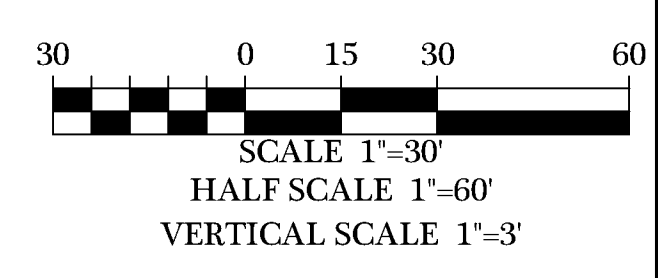
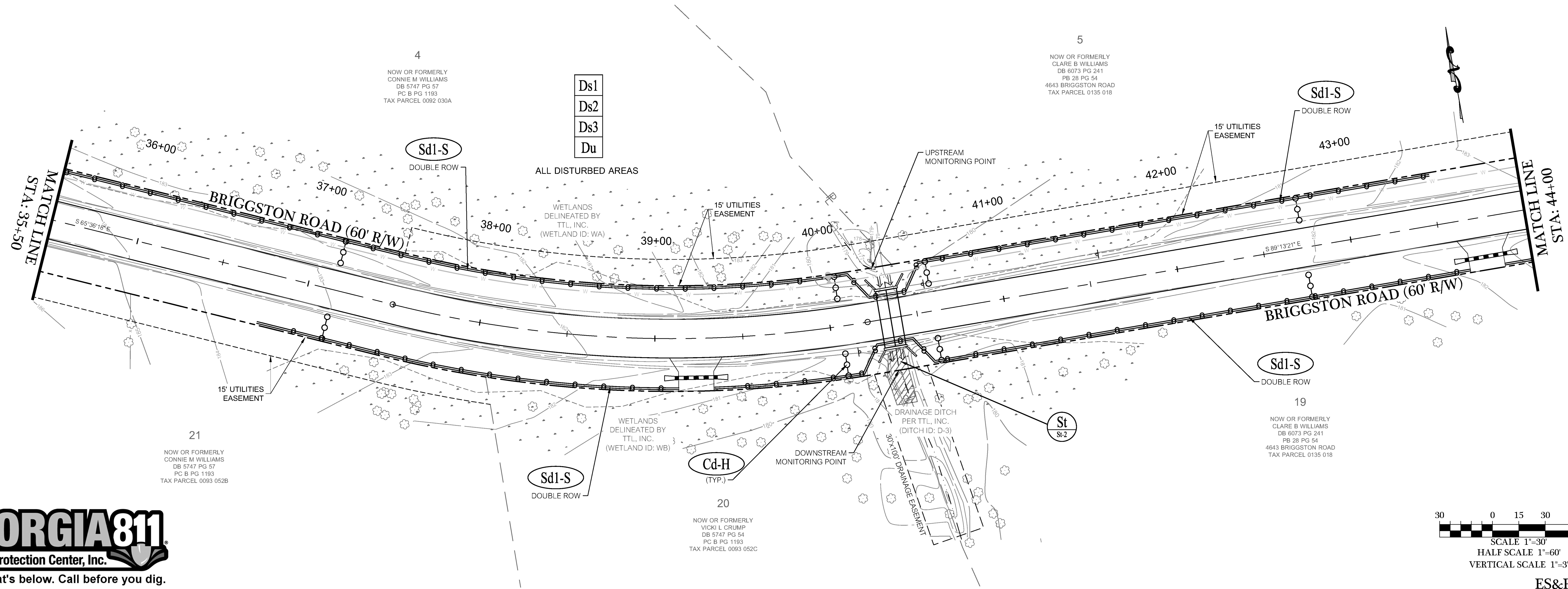
EROSION SYMBOL LEGEND

Sd1-NS	SILT FENCING-NON-SENSITIVE	Ds3	DISTURBED AREA STABILIZATION (WITH PERMANENT SEEDING)
Sd1-S	SILT FENCING-SENSITIVE	Du	DUST CONTROL
Sd2-F	INLET SEDIMENT TRAP - FABRIC	Co	CONSTRUCTION EXIT
Ds1	DISTURBED AREA STABILIZATION (WITH MULCHING ONLY)	St	OUTLET PROTECTION
Ds2	DISTURBED AREA STABILIZATION (WITH TEMPORARY SEEDING)	Cd-H	CHECK DAM-HAY BALE

Ds1
Ds2
Ds3
Du

ALL DISTURBED AREAS

PROJECT LIMITS EXTEND TO RW



REVISIONS

DATE	REVISIONS PER COUNTY COMMENTS
02/24/2023	REVISIONS PER COUNTY COMMENTS
02/24/2023	REVISIONS PER COUNTY COMMENTS
02/24/2023	REVISIONS PER COUNTY COMMENTS
02/24/2023	REVISIONS PER COUNTY COMMENTS

BRIGGSTON ROAD
PAVING IMPROVEMENTS
LOWNDES COUNTY, GEORGIA
L.L. 20, 21, 24, 25, & 26 OF THE 16TH L.D.
& L.L. 70 & 71 OF THE 11TH L.D.

INNOVATE!
Engineering & Surveying
PHONE: 229-249-9113 - www.innovatees.com
2214 N. Patterson Street, Valdosta, GA 31602

GEORGIA
REGISTERED
No. 22564
PROFESSIONAL
ENGINEER
William M. Kent
WILIAM D. KENT

LEVEL II CERT. 8141

DATE: 09/14/2022
DRAWN BY: M. WILSON
CHECKED BY: B. KENT

SHEET
26 of 47

PROJECT NUMBER
1669

GEORGIA811
Utilities Protection Center, Inc.
Know what's below. Call before you dig.

ES&PC 2