

**CONTACT INFORMATION**

LOWNDES COUNTY  
ENGINEERING DEPT. - MIKE FLETCHER, PE 671-2424  
UTILITIES DEPT. - STEVE STALVEY 671-2500

LEA  
PROJECT ENGINEER - CLAYTON MILLIGAN, PE  
PRINCIPAL-IN-CHARGE - JEFF LOVELL, PE

24-HOUR CONTACT  
NAME  
TITLE  
ADDRESS  
PHONE #

# GROVE POINT LIFT STATION ACCESS

FOR



LEA PROJECT NUMBER 0010-148  
SUBMITTAL DATE: APRIL 10, 2023  
LOWNDES COUNTY, GEORGIA

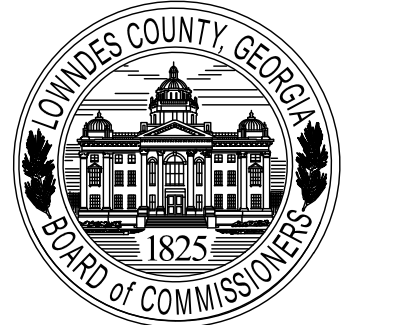
**DRAWING INDEX**

SHEET	DESCRIPTION
C-1	COVER
C-2	EXISTING SITE SURVEY
C-3	PROPOSED SITE PLAN
C-4	PROPOSED GRADING



GA CORP# 0419099  
FL CORP# F04000002135  
P.O. Box 2830  
3998 Inner Perimeter Road  
Valdosta, GA 31604  
Telephone: 229-253-0900  
Fax: 229-253-1842  
E-mail: lea@lea-pc.com

**GROVE POINT LIFT STATION ACCESS**



LOWNDES COUNTY  
STATE OF GEORGIA

REVISIONS	
DATE	DESCRIPTION



Know what's below.  
Call before you dig.  
**IF YOU DIG GEORGIA...  
CALL US FIRST!**  
UTILITIES PROTECTION CENTER  
**IT'S THE LAW**  
www.gaupc.com

SCALE: N.T.S.

DESIGNED BY: MCM

CHECKED BY: MCM

SUBMITTAL DATE: 04/10/23

JOB NO. 0010-148

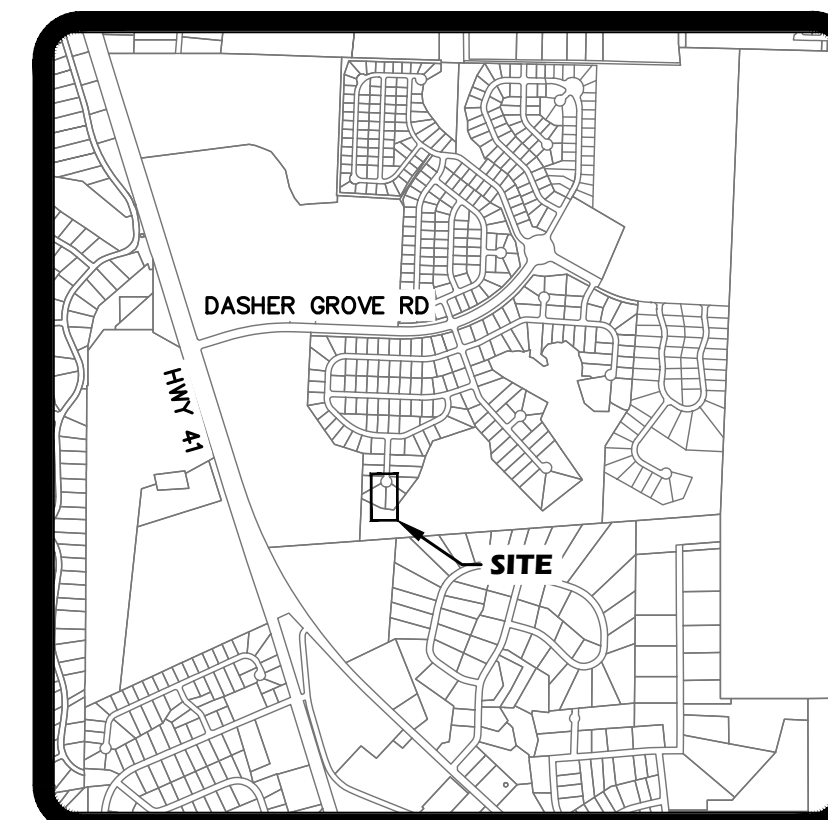
THESE DRAWINGS ARE THE PROPERTY OF THE ENGINEER AND MAY NOT BE REPRODUCED OR REUSED WITHOUT PERMISSION AND CREDIT. © LEA 2022

**NOT FOR CONSTRUCTION**

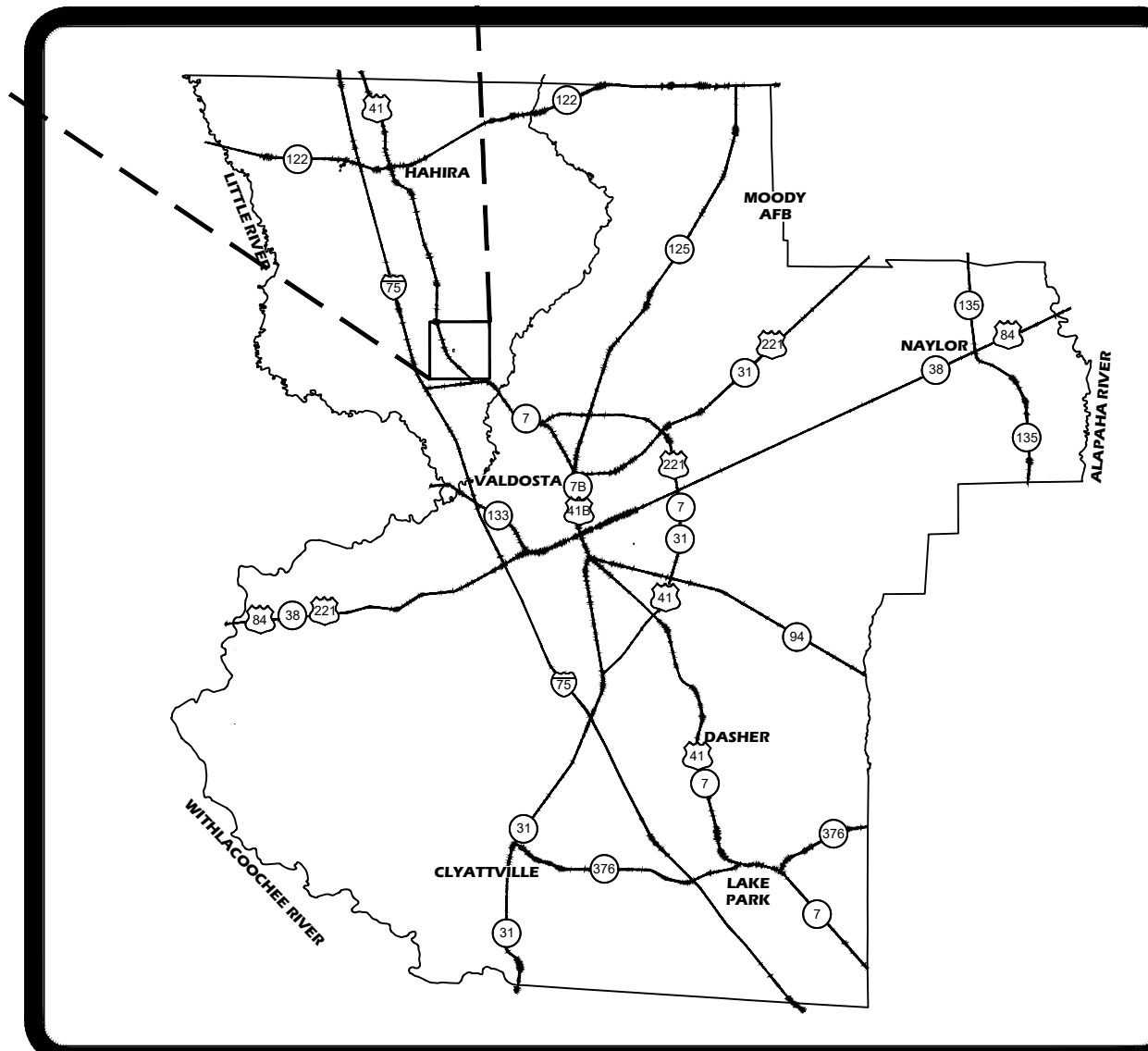
COVER

**C-1**

1 OF 4 SHEETS



1" = 0000'



**LOCATION MAP**  
N.T.S.

**LEGEND**

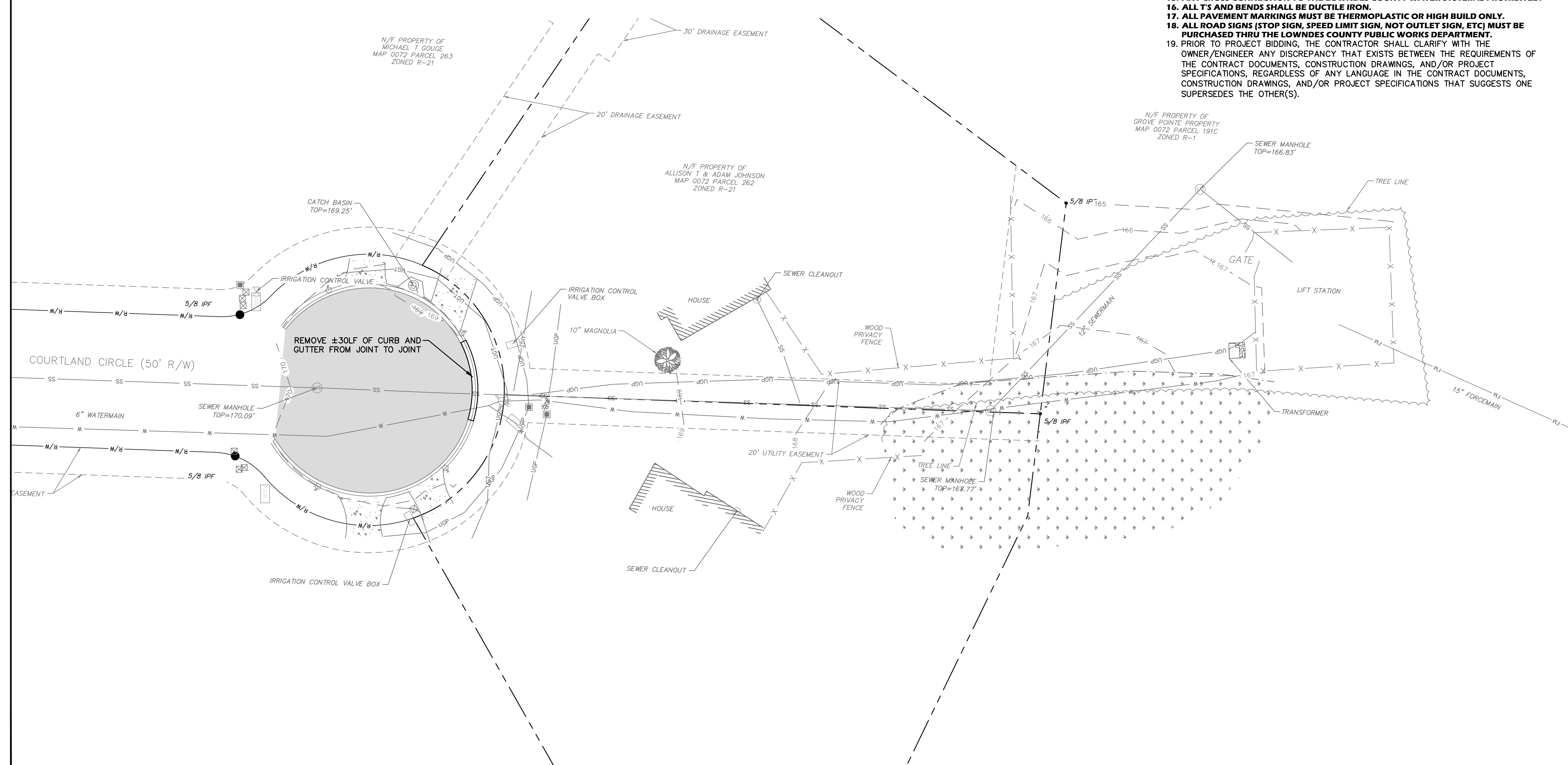
	EXISTING	PROPOSED
GAS LINE	— GAS —	— GAS —
WATER LINE	— W —	— W —
SEWER LINE	— SS —	— SS —
FORCE MAIN	— FM —	— FM —
OVERHEAD POWER	— OHP —	— OHP —
UNDERGROUND POWER	— UGP —	— UGP —
UNDERGROUND CABLE	— UGC —	— UGC —
CONTOUR	— 100 —	— 100 —
RIGHT-OF-WAY LINE	— R/W —	— R/W —
STORM PIPE	— —	— —
PROPERTY LINE	— —	— —
EASEMENT	— —	— —
FENCE	— X —	— X —
SPOT ELEV.	— —	— —
FLOW ARROW	— —	— —
FIRE HYDRANT	— —	— —
WATER VALVE	— —	— —
WATER FIRE DEPARTMENT	— —	— —
WATER METER	— —	— —
WATER SERVICE	— —	— —
CLEANOUT	— —	— —
SEWER MANHOLE	— —	— —
STORM CATCHBASIN	— —	— —
STORM GRATE INLET	— —	— —
STORM HEADWALL	— —	— —
FLARED END SECTION	— —	— —
UTILITY POLE	— —	— —
GAS VALVE	— —	— —
MAILBOX	— —	— —



GA CORP#0419099 • FL CORP#F04000002135  
P.O. Box 2830 • 3998 Inner Perimeter Road • Valdosta, GA 31604  
Telephone: 229-253-0900 • Fax: 229-253-1842 • E-mail: lea@lea-pc.com

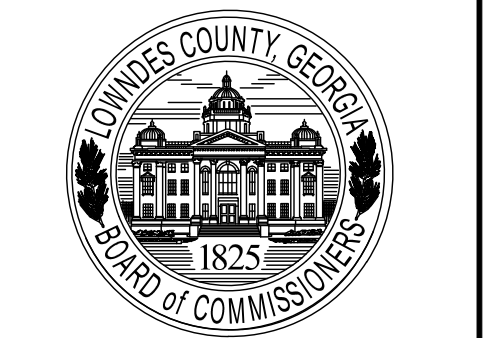
**GENERAL CONSTRUCTION NOTES:**

1. AN AS-BUILT SURVEY IS REQUIRED PER THE LOWNDES COUNTY ULDC.
2. WHILE WORKING WITHIN LOWNDES COUNTY RIGHT OF WAY, EASEMENTS, OR ANY OTHER AREA WITHIN THE CONSTRUCTION LIMITS, THE CONTRACTOR SHALL BE RESPONSIBLE FOR CLEARING & GRUBBING AND THE REMOVAL OF ALL DEBRIS.
3. CONTRACTOR SHALL HAVE ALL EROSION CONTROL MEASURES IN PLACE PRIOR TO CONSTRUCTION.
4. CONTRACTOR TO NOTIFY UTILITY PROTECTION CENTER A MINIMUM OF 72 HOURS PRIOR TO CONSTRUCTION.
5. CONTRACTOR TO VERIFY ALL HORIZONTAL & VERTICAL LOCATIONS OF ALL EXISTING AND PROPOSED STRUCTURES PRIOR TO CONSTRUCTION.
6. CONTRACTOR TO NOTIFY ENGINEER OF ANY CONFLICTS IN THE PLANS PRIOR TO AND DURING CONSTRUCTION. FAILURE TO NOTIFY ENGINEER WILL RESULT IN CONTRACTOR RESPONSIBILITY TO REPAIR AT OWN EXPENSE.
7. CONTRACTOR RESPONSIBLE FOR ALL DAMAGED UTILITIES DURING CONSTRUCTION.
8. PEDESTRIAN AND LOCAL TRAFFIC SHALL BE MAINTAINED AT ALL TIMES DURING CONSTRUCTION. SAFETY DEVICES AND FLAGGERS WILL BE PROVIDED AT CONTRACTOR EXPENSE.
9. CONTRACTOR TO PROVIDE ALL CONSTRUCTION STAKING.
10. **ALL WORK SHALL BE IN ACCORDANCE WITH LOWNDES COUNTY STANDARDS AND SPECIFICATIONS.**
11. **CONTRACTOR SHALL NOTIFY THE COUNTY ENGINEER AT LEAST 24 HOURS PRIOR TO THE BEGINNING OF EACH PHASE OF CONSTRUCTION.**
12. **CONTRACTOR SHALL NOTIFY THE LOWNDES COUNTY UTILITIES DEPARTMENT AT LEAST 24 HOURS PRIOR TO ANY CONNECTION TO THE LOWNDES COUNTY UTILITY SYSTEM.**
13. **ALL EXTENSIONS AND ADDITIONS TO THE COUNTY UTILITY SYSTEM SHALL BE PERFORMED BY A GEORGIA LICENSED UTILITY CONTRACTOR.**
14. **A MINIMUM OF 18" OF VERTICAL AND 10' OF HORIZONTAL SEPARATION SHALL BE MAINTAINED BETWEEN ALL UTILITIES.**
15. **ANY CROSS CONNECTION TO THE LOWNDES COUNTY WATER SYSTEM IS PROHIBITED.**
16. **ALL T'S AND BENDS SHALL BE DUCTILE IRON.**
17. **ALL PAVEMENT MARKINGS MUST BE THERMOPLASTIC OR HIGH BUILD ONLY.**
18. **ALL ROAD SIGNS (STOP SIGN, SPEED LIMIT SIGN, NOT OUTLET SIGN, ETC) MUST BE PURCHASED THRU THE LOWNDES COUNTY PUBLIC WORKS DEPARTMENT.**
19. PRIOR TO PROJECT BIDDING, THE CONTRACTOR SHALL CLARIFY WITH THE OWNER/ENGINEER ANY DISCREPANCY THAT EXISTS BETWEEN THE REQUIREMENTS OF THE CONTRACT DOCUMENTS, CONSTRUCTION DRAWINGS, AND/OR PROJECT SPECIFICATIONS, REGARDLESS OF ANY LANGUAGE IN THE CONTRACT DOCUMENTS, CONSTRUCTION DRAWINGS, AND/OR PROJECT SPECIFICATIONS THAT SUGGESTS ONE SUPERSEDES THE OTHER(S).



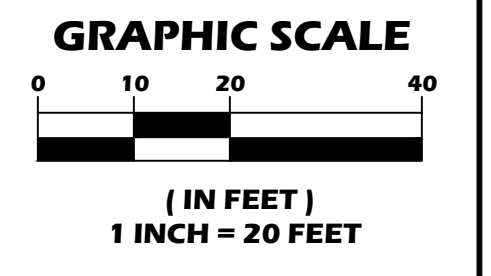
GA CORP# 0419099  
 FL CORP# F0400002135  
 P.O. Box 2830  
 3998 Inner Perimeter Road  
 Valdosta, GA 31604  
 Telephone: 229-253-0900  
 Fax: 229-253-1842  
 E-mail: lea@lea-pc.com

**GROVE  
 POINT LIFT  
 STATION  
 ACCESS**



**LOWNDES COUNTY  
 STATE OF GEORGIA**

REVISIONS	
DATE	DESCRIPTION



**SCALE: 1"=20'**

**DESIGNED BY: MCM**

**CHECKED BY: MCM**

**SUBMITTAL DATE: 04/10/23**

**JOB NO. 0010-148**

THESE DRAWINGS ARE THE PROPERTY OF THE ENGINEER AND MAY NOT BE REPRODUCED OR REUSED WITHOUT PERMISSION AND CREDIT. © LEA 2022

**NOT FOR  
 CONSTRUCTION**

**EXISTING SITE  
 SURVEY**

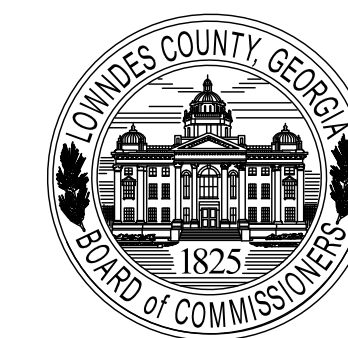
**C-2**

**2 OF 4 SHEETS**



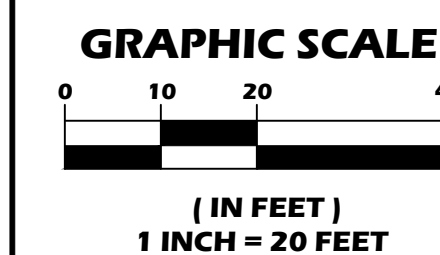
GA CORP# 0419099  
 FL CORP# F0400002135  
 P.O. Box 2830  
 3998 Inner Perimeter Road  
 Valdosta, GA 31604  
 Telephone: 229-253-0900  
 Fax: 229-253-1842  
 E-mail: lea@lea-pc.com

# GROVE POINT LIFT STATION ACCESS



LOWNDES COUNTY  
 STATE OF GEORGIA

REVISIONS	
DATE	DESCRIPTION



SCALE: 1"=20'

DESIGNED BY: MCM

CHECKED BY: MCM

SUBMITTAL DATE: 04/10/23

JOB NO. 0010-148

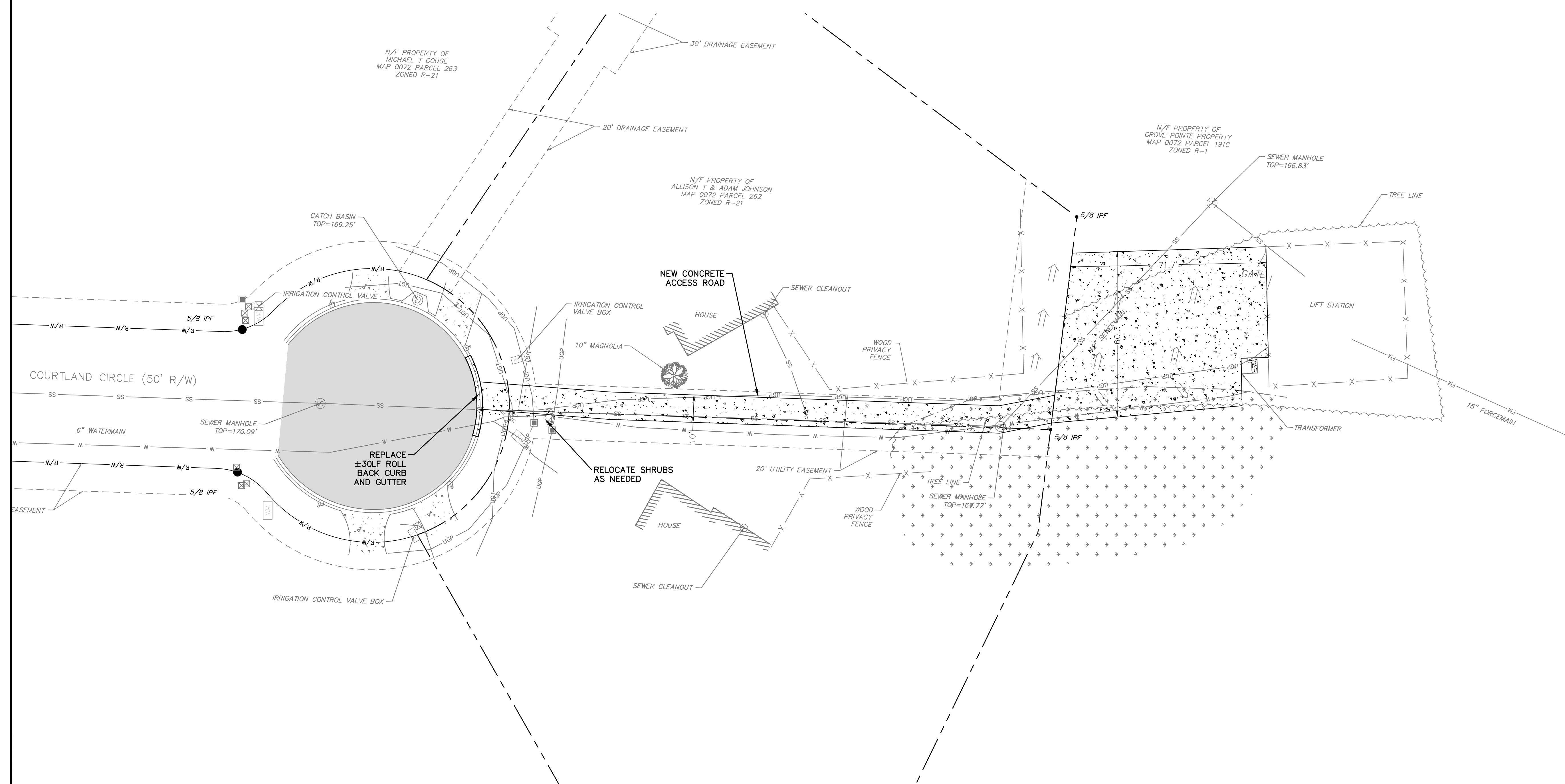
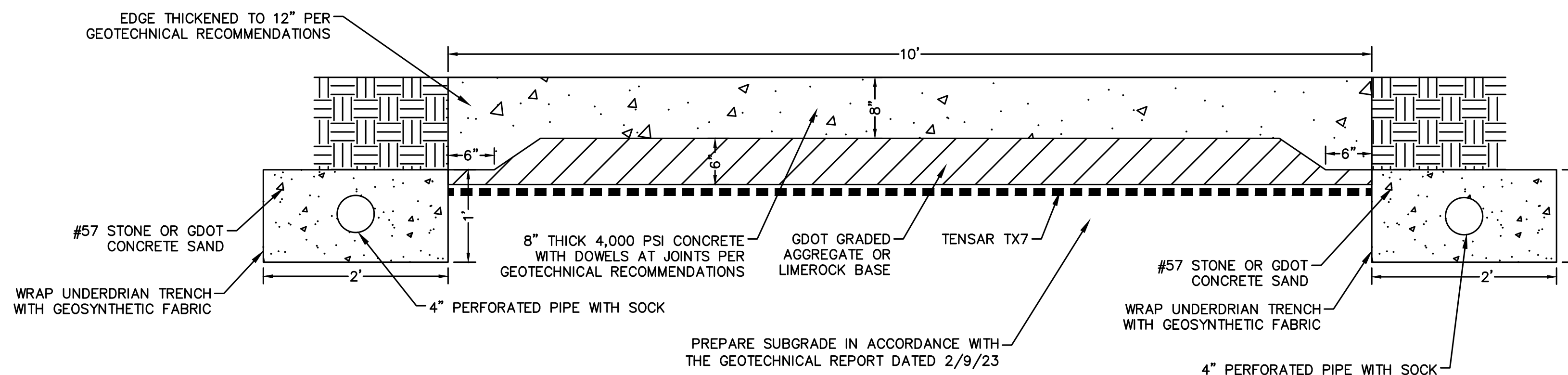
THESE DRAWINGS ARE THE PROPERTY OF THE ENGINEER AND MAY NOT BE REPRODUCED OR REUSED WITHOUT PERMISSION AND CREDIT.  
 © LEA 2022

**NOT FOR CONSTRUCTION**

**PROPOSED SITE PLAN**

**C-3**

3 OF 4 SHEETS

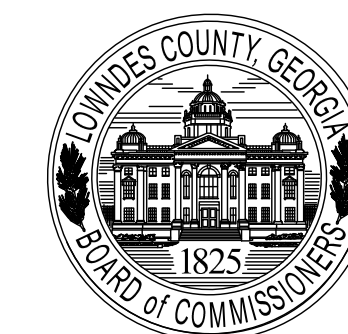


S:\0010-148 (Lowndes Co. Grove Point Lift Station Access)\DWG-PRODUCTION\0010-148\_PRODUCTION.dwg 4/10/2023 11:56 AM



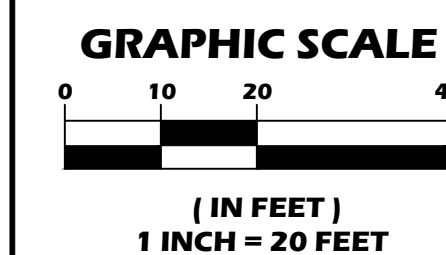
GA CORP# 0419099  
 FL CORP# F0400002135  
 P.O. Box 2830  
 3998 Inner Perimeter Road  
 Valdosta, GA 31604  
 Telephone: 229-253-0900  
 Fax: 229-253-1842  
 E-mail: lea@lea-pc.com

# GROVE POINT LIFT STATION ACCESS



LOWNDES COUNTY  
 STATE OF GEORGIA

REVISIONS	
DATE	DESCRIPTION



SCALE: 1"=20'

DESIGNED BY: MCM

CHECKED BY: MCM

SUBMITTAL DATE: 04/10/23

JOB NO. 0010-148

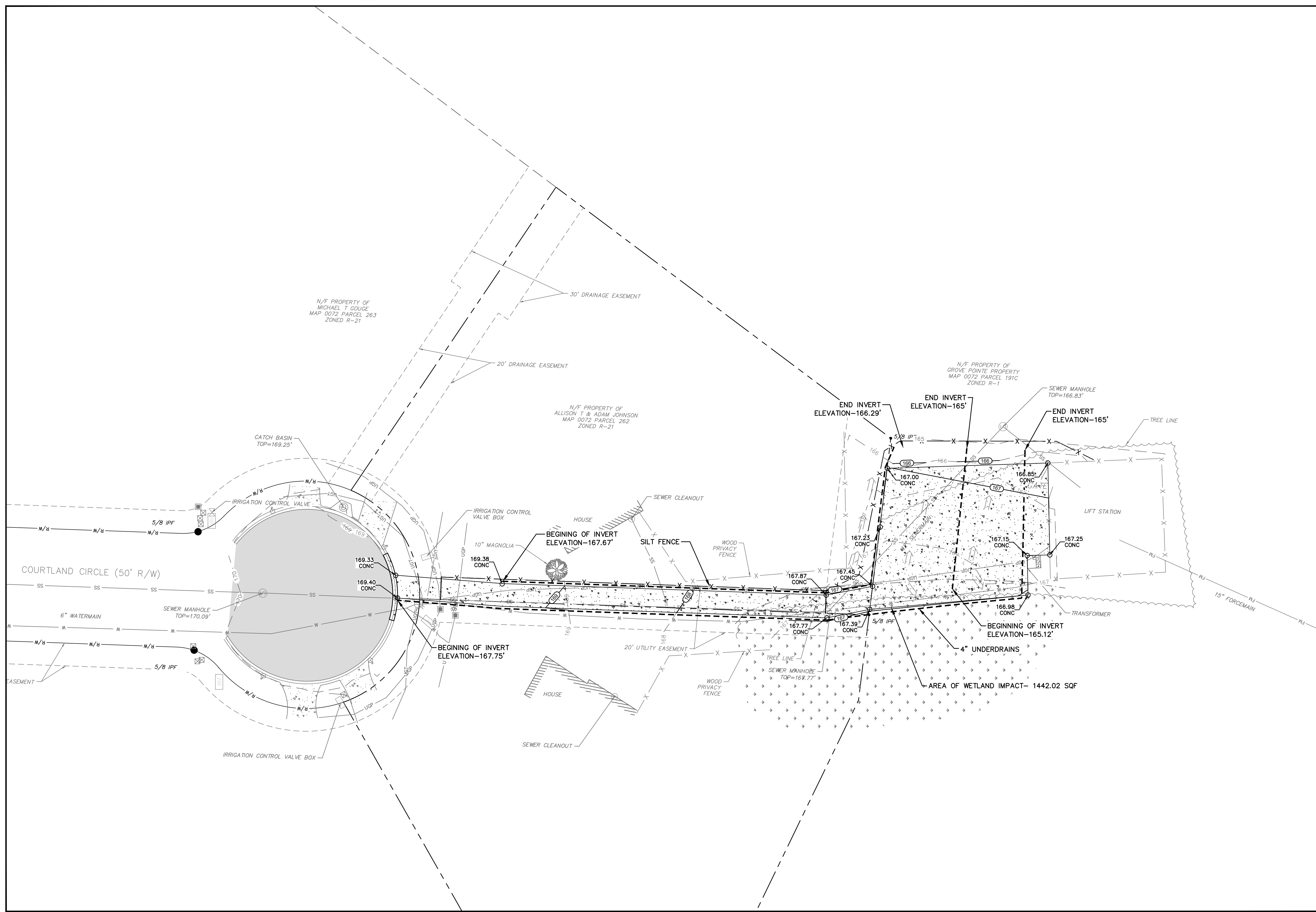
THESE DRAWINGS ARE THE PROPERTY OF THE ENGINEER AND MAY NOT BE REPRODUCED OR REUSED WITHOUT PERMISSION AND CREDIT. © LEA 2022

**NOT FOR CONSTRUCTION**

**PROPOSED GRADING PLAN**

**C-4**

4 OF 4 SHEETS



S:\0010-148 (Lowndes Co. Grove Point Lift Station Access)\DWG-PRODUCTION\0010-148\_PRODUCTION.dwg 4/10/2023 11:56 AM