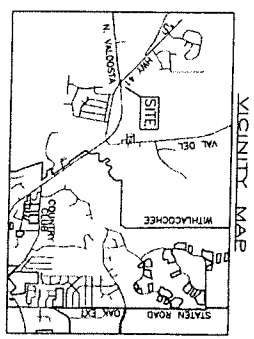
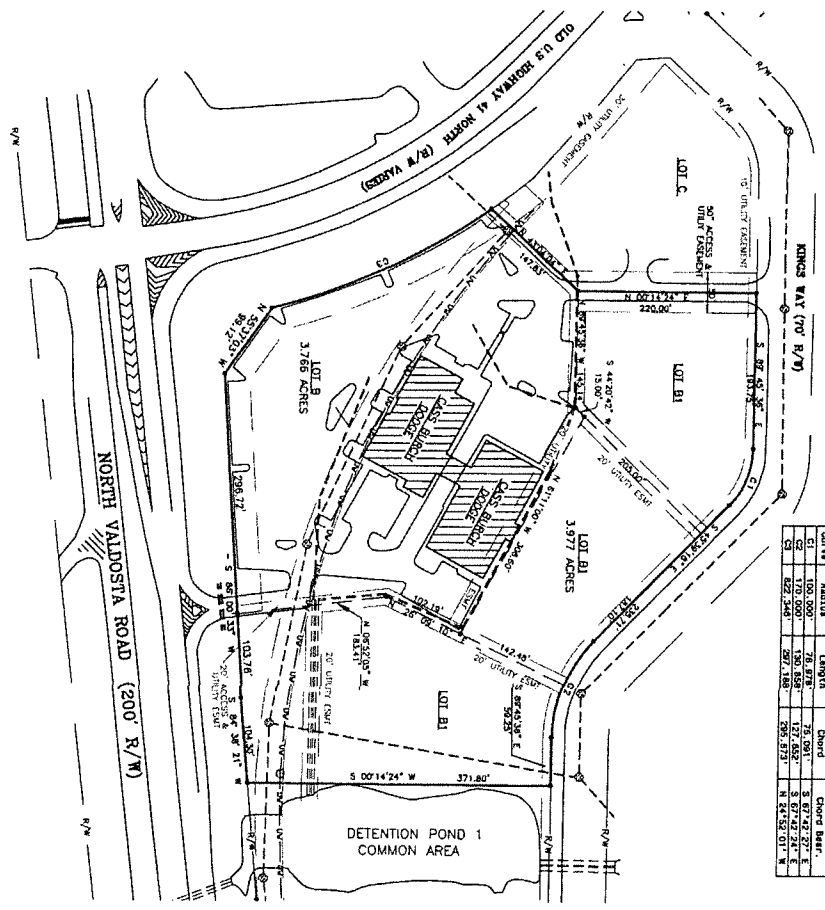


**GENERAL NOTES**

THE PURPOSE OF THIS PLAT IS TO CORRECT LOT B1 AS SHOWN TO THE PLAT PREPARED BY DGPS, INC. AND CORRECT A PAGE 2325 AS PREVIOUSLY RECORDED. THESE REVISIONS WERE MADE BY THE SURVEYOR AND ARE BEING RECORDED IN PLAT CABINET A PAGE 2325 OF GEORGIA. THE PLAT PROPERTY IS DESCRIBED BY LOWMEDES COUNTY TAX MAP NO. 2399, PAGE 141, AND PLAT CABINET A PAGE 2325 OF GEORGIA. THE LOT IS SITED BY LOWMEDES COUNTY WATER AND SEWER. THE LOT IS SITED BY LOWMEDES COUNTY WATER AND SEWER. A PORTION OF THIS PROPERTY IS IN ZONE "R" AND IS SUBJECT TO SPECIAL FLOOD HAZARDS. REFER TO FEMA COMMENTARY PLAT NO. 1318800115, DATED 09/26/2008. THIS SURVEY HAS BEEN PREPARED WITHOUT THE BENEFIT OF A TITLE REPORT MAY EXIST. TOTAL AREA = 7.743 ACRES. ELEVATIONS USED: TOPCON OPT-3000A & CRES GPS INTEGRATED STATION WITH LEICA/STATION DATA COLLECTION SOFTWARE.



**SURVEYOR'S CERTIFICATION:**  
 I HEREBY CERTIFY THAT ALL MEASUREMENTS ARE CORRECT AND THAT THE PLAT PROPERTY IS DESCRIBED BY LOWMEDES COUNTY TAX MAP NO. 2399, PAGE 141, AND PLAT CABINET A PAGE 2325 OF GEORGIA. THE FIELD DATA WERE OBTAINED FROM AN OPEN LOOP TRAVERSE. THE PLAT HAS BEEN CALCULATED FOR CLOSURE PERFORMED. THE PLAT HAS A MINIMUM OF 1 FOOT IN 897,114 FEET.

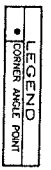
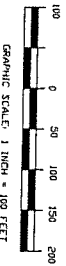


Curve	Status	Length	Chord	Chord Bear.
C1	170.000'	170.000'	170.000'	S 87°42'27" E
C2	170.000'	170.000'	170.000'	S 87°42'27" E
C3	170.000'	170.000'	170.000'	S 87°42'27" E
C4	170.000'	170.000'	170.000'	S 87°42'27" E
C5	170.000'	170.000'	170.000'	S 87°42'27" E
C6	170.000'	170.000'	170.000'	S 87°42'27" E
C7	170.000'	170.000'	170.000'	S 87°42'27" E
C8	170.000'	170.000'	170.000'	S 87°42'27" E
C9	170.000'	170.000'	170.000'	S 87°42'27" E
C10	170.000'	170.000'	170.000'	S 87°42'27" E

GEORGIA LAND SURVEYING AND MAPPING  
 PLAT CABINET A PAGE 2325  
 STATE OF GEORGIA  
 11/14/2011

UNIFIED LAND SURVEYING AND MAPPING CODE  
 THIS PLAT IS IN ACCORDANCE WITH THE  
 PROFESSIONAL LAND SURVEYING AND MAPPING  
 ACT OF 1967, AS AMENDED.  
 JASON M. DUNN, CHAIRMAN, TECHNICAL ADVISORY COMMITTEE

CALL BEFORE DIGGING  
 1-800-282-7411  
 UTILITIES PROTECTION CENTER



DGPS PROJECT NUMBER: 11038LWN

TOTAL AREA	LAND LOT	LAND DISTRICT
7.743 ACRES	11	12th
CITY	COUNTY	
N/A	LOWMEDES	
FIELD SURVEY:	1 NOVEMBER 2011	
DATE COMPLETED:	3 NOVEMBER 2011	

REVISION OF THE SURVEY FOR  
 CAMELOT CROSSING ADDITION ONE - LOT B  
 AS RECORDED IN PLAT CABINET A PAGE 2325

PLAT PREPARED BY  
 DGPS, INC

PROFESSIONAL LAND SURVEYING AND MAPPING  
 3859 KNIGHTS ACADEMY ROAD, VALDOSTA, GA 31602 PH: 229-740-0566 FAX: 229-245-0431