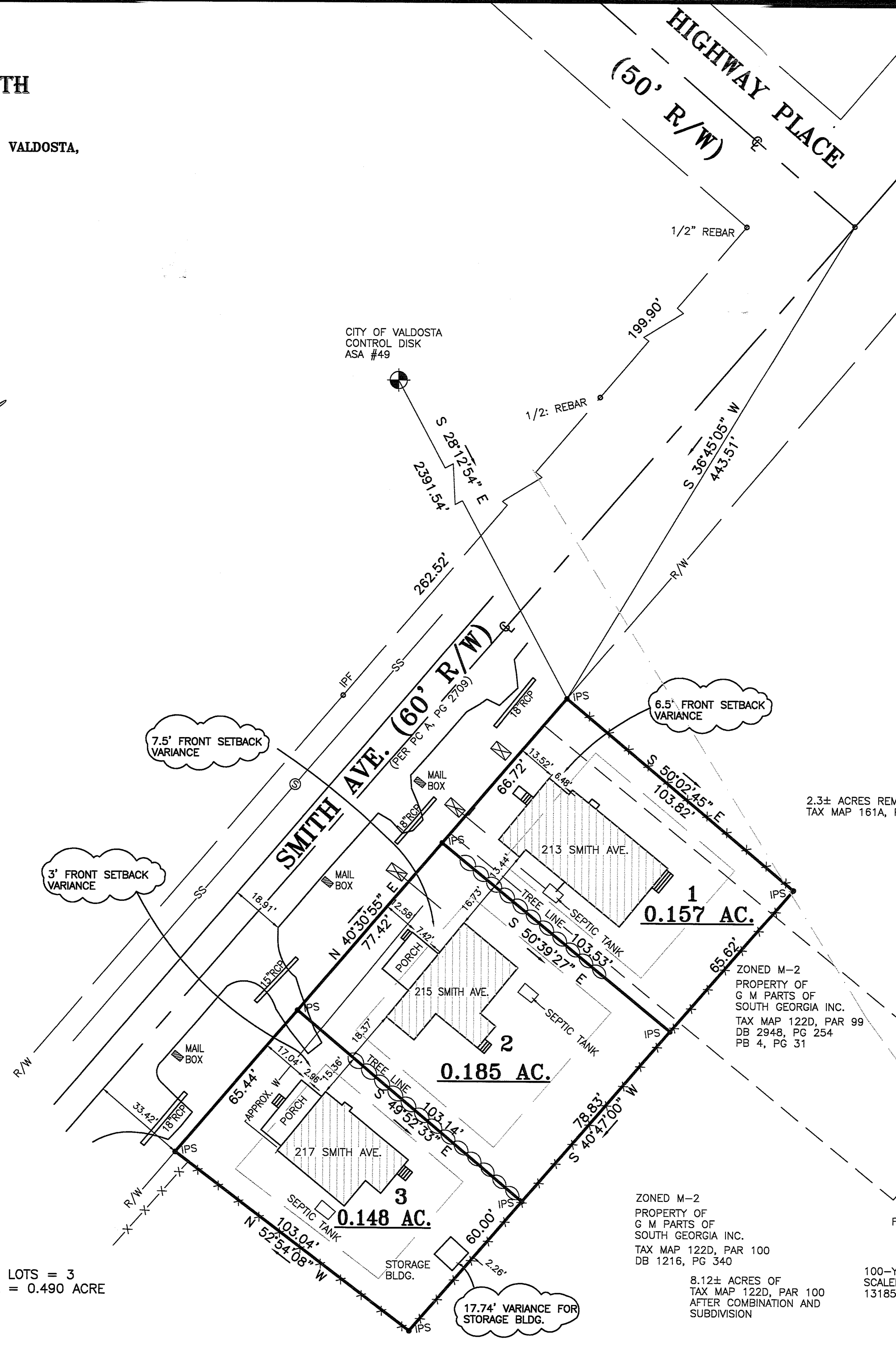
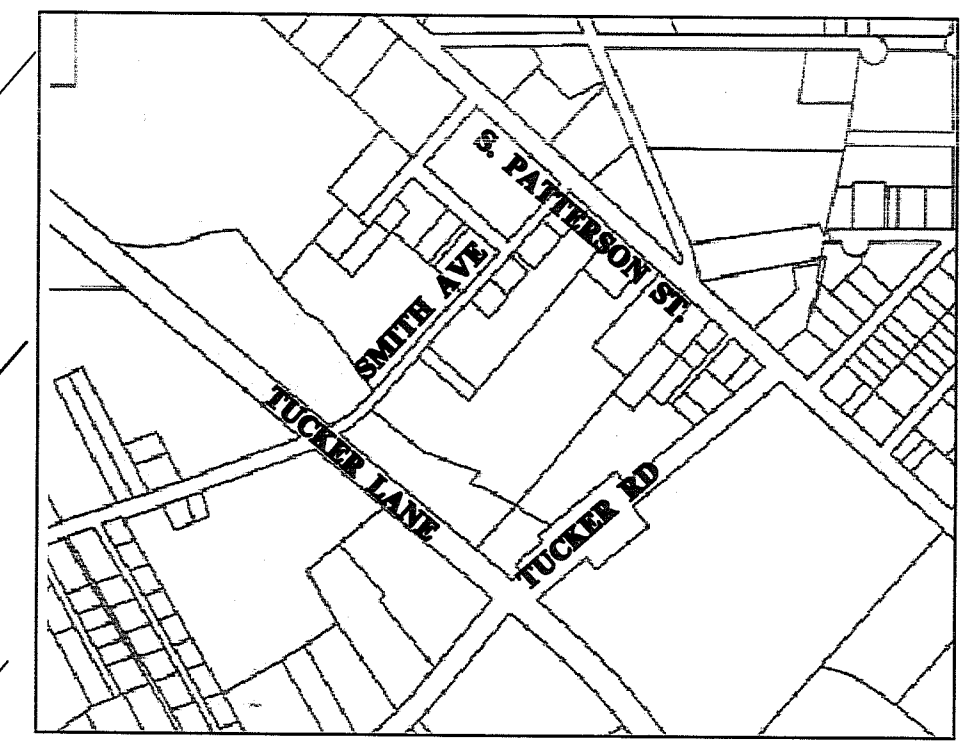
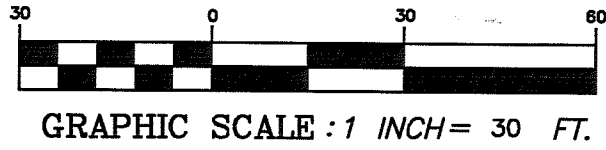


VARIANCE PLAT FOR
**SALVAGE GM PARTS OF SOUTH
 GEORGIA, INC.**

BEING IN LAND LOT 78 OF THE 11TH LAND DISTRICT, VALDOSTA,
 LOWNDES COUNTY, GEORGIA

SURVEY DATE: MARCH 15, 2018
 PLAT DATE: MARCH 18, 2018



SETBACKS
 FRONT - 20'
 SIDE - 8'
 REAR - 20'

- IPS - IRON PIN SET - 5/8" REBAR
- IPF - IRON PIN FOUND - 5/8" REBAR
- ⊗ - WATER METER
- R/W - RIGHT OF WAY
- C/L - CENTERLINE
- X-X- - FENCE
- ⊙ - SEWER MANHOLE

EQUIPMENT USED: TOPCON PS-103A "TOTAL STATION"
 FIELD CLOSURE: 1"/170,378
 ANGLE ERROR: 5"/PT
 METHOD OF ADJUSTMENT: NONE
 PLAT CLOSURE: 1"/90,784

BEARINGS SHOWN WERE CALCULATED FROM
 FIELD ANGLES TURNED REFERENCED TO
 PC A, PG 311

TOTAL NO. LOTS = 3
 TOTAL AREA = 0.490 ACRE

**Southeastern
 Surveying, Inc.**

601 N. St. Augustine Rd. Telephone: 229-259-9455
 Valdosta, GA 31601 Fax: 229-259-9926
 E-mail: bherring@seseurveying.com
 GA Certificate of Authorization No. 685

2.3± ACRES REMAINING
 TAX MAP 161A, PAR 172

ZONED M-2
 PROPERTY OF
 G M PARTS OF
 SOUTH GEORGIA INC.
 TAX MAP 161A, PAR 172
 DB 1309, PG 270

ZONED M-2
 PROPERTY OF
 G M PARTS OF
 SOUTH GEORGIA INC.
 TAX MAP 122D, PAR 99
 DB 2948, PG 254
 PB 4, PG 31

ZONED M-2
 PROPERTY OF
 G M PARTS OF
 SOUTH GEORGIA INC.
 TAX MAP 122D, PAR 100
 DB 1216, PG 340

8.12± ACRES OF
 TAX MAP 122D, PAR 100
 AFTER COMBINATION AND
 SUBDIVISION

100-YR FLOOD PLANE AS
 SCALED FROM F.E.M.A. MAP
 13185C0220E, DATED 9-26-08

THIS SURVEY WAS PREPARED IN
 CONFORMITY WITH THE TECHNICAL
 STANDARDS FOR PROPERTY SURVEYS IN
 GEORGIA AS SET FORTH IN CHAPTER
 180-7 OF THE RULES OF THE GEORGIA
 BOARD OF REGISTRATION FOR
 PROFESSIONAL ENGINEERS AND LAND
 SURVEYORS AND AS SET FORTH IN THE
 GEORGIA PLAT ACT O.C.G.A. 15-6-67.